

ARTIFICIAL LIMBS MANUFACTURING CORPORATION OF INDIA

G T Road, Naramau, Kanpur – 209217

“TENDER DOCUMENT”

Work of Calibration & Certification of Quality_Control Special purpose gauges.

Tender No. LT/QC/02/AY Dated : 17/06/2020 Due on – 09/07/2020

Date :- 17/06/2020

TO,

M/S.....
.....
.....
.....

Dear Sir,

Sealed offers are invited for the work of Calibration & Certification of measuring gauges for special purpose from National Accreditation Board for testing and calibration laboratories (NABL) accredited / approved / authorized Laboratories /establishments capable of undertaking calibration work of the quality control instruments / equipment etc.

2. Scope of Work:

2.1 The scope shall cover the complete work of calibration & certification of Quality Control special purpose gauges etc. as per the list of gauges noted at Annexure "A" as per drawings enclosed.

2.2 The job order shall be placed on single tenderer for compete job work Sl. (1) to (32) of Annexure “A” on the basis of lowest consolidated values.

3. Period of Completion:

The entire work under the scope of work in this tender shall be completed within 40 days from the date of acceptance of Work Contract / agreement. The Work Contract / Agreement will be issued to the successful Tenderer.

4. Qualification of Tenderers :

Tenderers who are National Accreditation Board for testing and calibration laboratories (NABL) accredited/ approved / authorized Laboratory / establishments capable for undertaking calibration work of quality control instruments / equipment etc.(Mechanical) are desired to quote rates for the work. Tenders are requested to enclosed the copies of NABL accreditation certification. Offer from tenderers who are not NABL accredited/ approved / authorized laboratory establishment for calibration & certification shall not be considered. Performance shall be given to the parties quoting for all the instruments items mentioned at Annexure “A” enclosed. The tenderer has to submit an undertaking to cover the equipment as listed in ANNEXURE “A” shall be able to provide NABL accredited/ approved traceable test certificate Annexure ‘B’ enclosed.

5. A. Submission of Tender :

Quotation must be sent under sealed cover super scribing on envelope " Enquiry LT/QC/02/AY dated-17th June2020 and should be addressed to Dy.General Manager (QC) ALIMCO,G. T. Road, Kanpur-209217.The due date for opening of tender must be clearly super scribed on the envelope. Each and every page of tender documents duly signed and stamped by the tenderer must be sent along with the quotation.

The offer should preferably be sent by Registered Post acknowledgement due, speed post or by reputed courier at their own discretion so as to reach us on or before due date & time .The postal and transit delay, if any may not be considered for reckoning the tenders as VALID for our consideration.

5. B. Earnest Money Deposit (EMD)

Tenders are required to submit 5% of quoted value by Demand Draft in favour of ALIMCO,Kanpur as an Earnest Money Deposit.**Offer received without EMD WILL not be considered.**

All SSI units/Micro & small enterprises (MSE) will get exemption to submit Earnest Money Deposit (EMD) on submission of valid Udyog Aadhar Memorandum(UAM) against tender for the items/nature of business/type of services specified therein in the UAM.

For all unsuccessful tenderers, the Earnest Money Deposit will be returned within 30 days of the expiry of the validity period of the tender or award of the tender whichever is earlier. The EMD refund will be done into the a/c no. after providing the RTGS details . In Case, decision is not taken within the validity period and validity is required to be extended, the Tenderer will be given option to withdraw and his EMD will be refunded within 30 days of withdrawal.

(a) **No interest shall be payable to tenderers by ALIMCO on EMD and security.**

(b)The Corporation reserves the right to forfeit the EMD / security money deposit in case the contractor fails to complete the work as per the terms of contract.

5. C Security Deposit (SD) / Performance Guarantee (PG)

(i) The Successful tenderer shall deposit 5 % of order/contract value as security deposit/performance guarantee in the form of Banker's cheque/Demand draft in favour of ALIMCO, Kanpur. An EMD will be adjusted in security deposit/performance guarantee.

(ii) Successful tenderer/bidder shall deposit additional Security Deposit of Rs.50,000/- in the form of Demand Draft or Pay order or Banker's Cheque or submit irrevocable Bank Guarantee from any of the Nationalized Bank in the prescribed format in favour of ALIMCO payable at Kanpur,for safe custody of ALIMCO material to be kept with the contractor to his custody before lifting the instrument/equipments in connection to the calibration work awarded. Security deposit/performance guarantee will be returned to the contractor within three months of successfully completion of work.

6 Opening of Tender :

All the tender must reach the office of the Dy. General Manager (Quality Control) latest by 14:00 hrs. on 09/07/2020 and will be opened on the same day at 15:00 hrs. by tender opening committee in presence of representative of tenderers who may like to be present. Tender received late (after due date & time) may not be considered.

7. Validity of Tender :

The tender should remain valid for acceptance for a minimum period of 90 days from the date of opening of tender or till such period up to which the extension of validity is agreed to mutually. This may please be stipulated clearly in the quotation.

8. Terms of Payment :

ALIMCO is a Government of India Undertaking registered under section 8 of Indian Company Act 2013. The terms of payment shall be as follows:-

:3:

- 8.1 100% payment excluding GST shall be paid within 30 days after confirmation from the QC department for the completion of work.
- 8.2 GST shall be paid on receipt of input credit in the GST portal of the corporation.
- 8.3 The packing and delivery of Gauge's for Calibration will be arranged by the Party.
- 8.4 Bank charges / Draft making charges will have to be borne by the party only.
- 8.5 The GST portion shall be paid only after submission of proof /self- certified copy of GST Quarterly Return (GSTR-1) filed online by the tender clearly (duly highlighted) showing invoice/bill number and amount to be submitted to ALIMCO so as to enable the Corporation to avail GST input credit after matching of the GST return and Invoice submitted in the Corporation. In case, non- matching no payment of GST shall be made.
- 8.6 The GST Tax applicable shall clearly be indicated in % as well as Rupees Our GSTIN No is 09AABCA8899F1Z6.

9. **Right of Acceptance:**

ALIMCO reserve the right to reject any or all the tenders in part of full without assigning any reasons thereof. The Corporation also reserves the right to negotiate the rates and terms & conditions with any or all the tenderers at its sole discretion as deemed fit without assigning any reasons thereof.

10. **Liquidated damages / Penalty for delay :**

The calibration & certification work shall be completed strictly as per time limits specified in the work contract / agreement failure to complete the work within stipulated time will make you liable to an unconditional penalty of ½% (Half percent) of the value of work per week or fraction of a week subjected to a maximum of 10% (Ten percent) of the work contract.

Any damage caused to the equipment / gadget / instrument will attract a penalty of free of cost replacement of same Make / Type.

ARBITRATION

- 11.1 If any dispute/question or controversy arises in respect of or arising out of the assignment / Job Work Contract, the matter in dispute shall be referred to the arbitration of the Chairman & Managing Director of ALIMCO or its nominee and the decision of the Chairman and Managing Director or nominee shall be final and binding on both the parties.
- 11.2 The provision of the **ARBITRATION & CONCILATION ACT 1996** as amended from time to time shall apply to such arbitration proceedings.
- 11.3 Arbitration proceedings shall be held at Kanpur only and the Kanpur City Court will have the Jurisdiction in the matter.

Thanking you,

Authorized Signatory
For Artificial Limbs Manufacturing Corporation of India
G T Road, Kanpur

Encl: - As above

**LIST OF SPECIAL PURPOSE GAUGES
FOR
CALIBRATION & CERTIFICATION.**

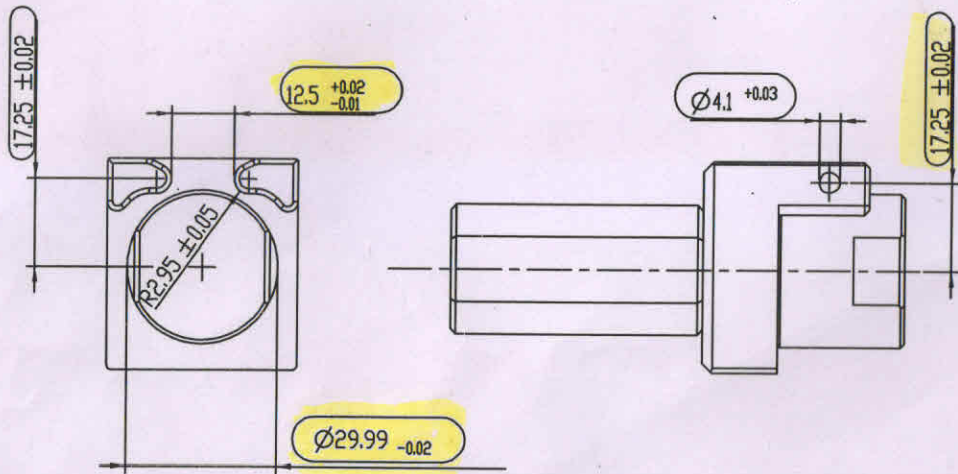
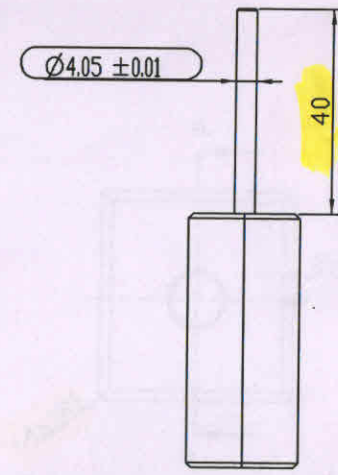
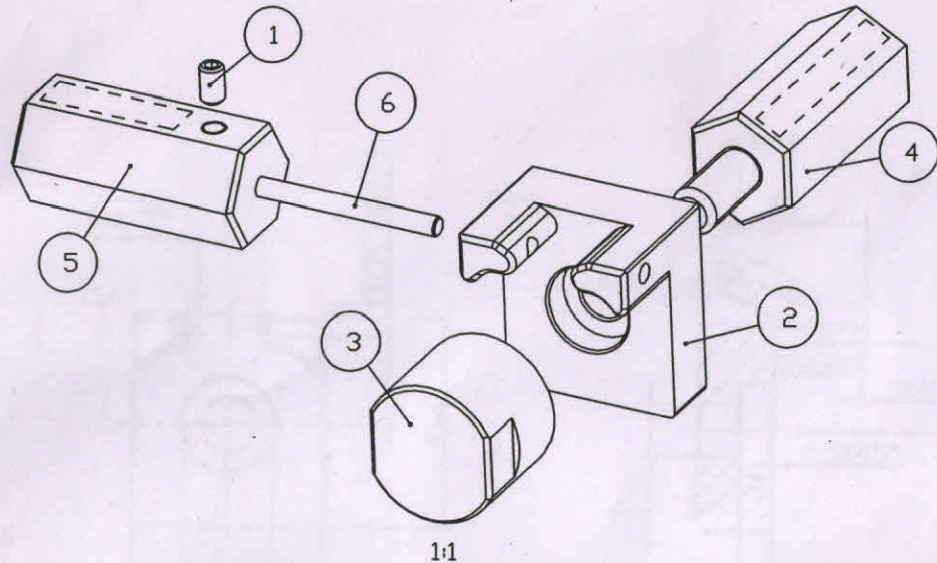
Sr.	Drg. No.	Description	Qty	No. of Dim.
1	W4R52-21	GAUGE FOR CLAMP CONTOUR FOR 4R21	1	7
2	W4R52-9	PLUG GAUGE FOR 4R21	2	4
3	W4R38-2	GAUGE FOR 4R37	1	4
4	W4Y364-2	PLUG GAUGE FOR 4R41	1	2
5	W4Y366-4	HOLDING DEVICE FOR 4R41	1	2
6	W4Y367-1	APPLICATION TO CHECK THE TORQUE FOR 4R41	1	1
7	W5R7-5=2	GAUGE FOR 5R6=2	1	3
8	W4R54-9	SPACING TEMPLATE FOR 5R6=2	1	3
9	W5R6-1	HOLE DISTANCE GAUGE FOR 5R6=2	1	4
10	W5R7-5=3	GAUGE FOR 5R6=3	1	3
11	W4R30-5	GAUGE FOR 2R3	1	2
12	W4R52-14	MEASURING STICK FOR 2R3	1	6
13	W4R53-11	GAUGE FOR 4R30=N4	1	7
14	W4R53-3	GAUGE FOR 4R30=N4	1	3
15	W2R8-6=10	GAUGE FOR 2Y61=M8-D-2-JI	1	4
16	W4G113-12	CONE GAUGE FOR 4G53=D-2-JI	1	9
17	PRL4Y84	MEASURING DEVICE FOR 4G53=D-2-JI	1	4
18	W4G62-6	GAUGE FOR 4G62=D-2-JI	1	6
19	W4G114-12	MEASURING DEVICE FOR SPHERE FOR 4G62=D-2-JI	1	6
20	W4G114-13	MEASURING DEVICE FOR BALL FOR 4G62=D-2-JI	1	5

Sr.	Drg. No.	Description	Qty	No. of Dim.
21	W4G72-2	CONE GAUGE	2	12
22	W4G72-7	CONE GAUGE CALIBRATION	1	6
23	W3DU42-1	CALLIPER GAUGE	1	1
24	744D3	AXEL LEVER CONE	1	4
25	W3R20-6	AXEL LEVER PAIR GAUGE	1	17
26	W4R27-26	ABSORPTION MEASURING INSTRUMENT FOR 4R21	1	1
27	W4Y2-1	GAUGE FOR HUB DIAMETER FOR 4R37	1	1
28	W4G60-5=C	HOLE DISTANCE GAUGE FOR 4G60=D-2JI	1	2
29	W4G112-9	GAUGE FOR 4G61=D-2-JI	1	1
30	W4Y366-1	THREAD RECEIVER FOR 4Y366	1	1
31	VW45	STEEL BALL MEASURING DIA- 49.95 mm	1	1
32	VW46	STEEL BALL MEASURING DIA-87.00 & 110.00 mm	2	2
		Total	35	134

NOTE-

- 1) No. of Dimensions May be vary $\pm 15\%$ of total dimension, drawings attached.
- 2) The job order shall be placed on single tenderer for complete job work S.No. (1) to (32) of Annexure "A" the basis of lowest consolidated values.
- 3) The Comparison of the bids shall be on basis of total price (inclusive of all taxes etc.) quoted by the bidder. No comparison of individual item will be made the individual item charge is only for reference purpose of this office.

34



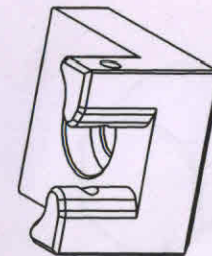
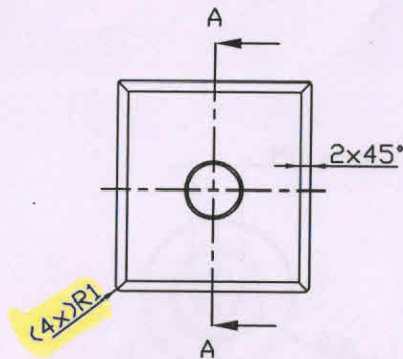
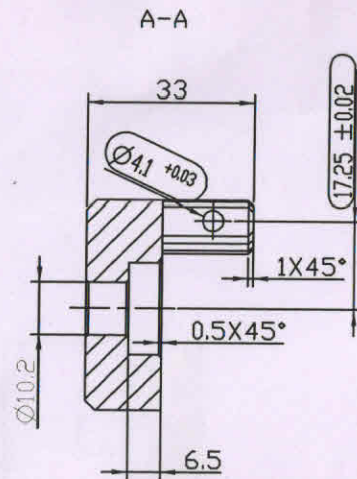
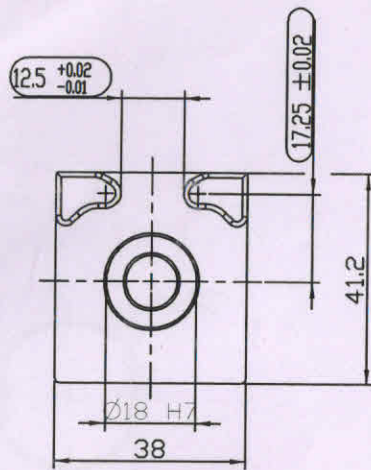
LEHRE	Lagerort
	Prüfintervall

6	zu W4R52-21	Prüfstift 4.05 / Tol-Klasse 2 / Hoffman Bolt 4.05	1	ST																			
5	zu W4R52-21	Griff Absteckbolzen Handle for bolt	1	ST	EN AW-7075																		
4	zu W4R52-21	Griff Handle	1	ST	EN AW-7075																		
3	zu W4R52-21	Aufnahme rund Socket round	1	ST	L2083																		
2	zu W4R52-21	Aufnahme Socket	1	ST	L2083																		
1	506G3-M5X8	Gewindestift Innensechskant Hexagon Socket Set Screw	2	ST																			
<table border="1"> <tr> <td>Materialnummer/</td> <td>Materialtext/</td> <td>Überflächenbesch./</td> <td>Finheit/Sun.</td> <td>Werkstoff/</td> <td></td> </tr> <tr> <td>Schulz/</td> <td>tolerance</td> <td>ce texture</td> <td></td> <td>Edges</td> <td></td> </tr> <tr> <td>DIN ISO 16016</td> <td>DIN ISO 2768-mK</td> <td>DIN EN ISO 1302</td> <td></td> <td>DIN ISO 13715</td> <td></td> </tr> </table>						Materialnummer/	Materialtext/	Überflächenbesch./	Finheit/Sun.	Werkstoff/		Schulz/	tolerance	ce texture		Edges		DIN ISO 16016	DIN ISO 2768-mK	DIN EN ISO 1302		DIN ISO 13715	
Materialnummer/	Materialtext/	Überflächenbesch./	Finheit/Sun.	Werkstoff/																			
Schulz/	tolerance	ce texture		Edges																			
DIN ISO 16016	DIN ISO 2768-mK	DIN EN ISO 1302		DIN ISO 13715																			
gezeichnet/Drawn by		Konstrukteur/Constr. eng.	PV/Product Resp.	Maßstab/Scale	Format/Format																		
Leuthaeusser_M		Leuthäuser_M	Böemeke_R	1:1	A3																		
Materialnummer/Materialnumber				Dokumentart/Document type																			
ottobock.		W4R52-21		Baugruppenzeichnung/ assembly drawing																			
Dttobock SE & Co. KGaA Duderstadt		Lehre für Schellenkontur Gauge for clamp contour		And./Rev.	Datum/Date 1/5																		
			6	20180509	1/5																		

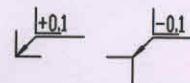
Filename: W4R52-21

DM

33



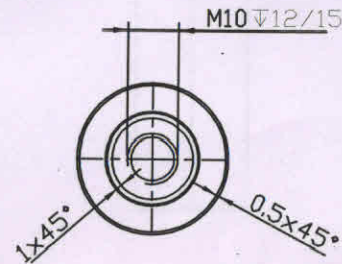
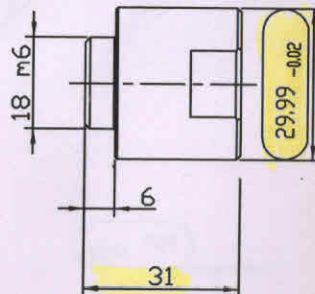
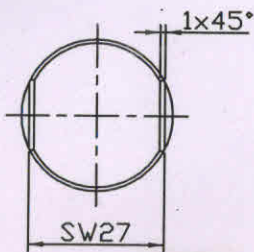
-gehärtet & angelassen 55+5HRC
 -fehlende Maße nach CAD



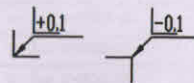
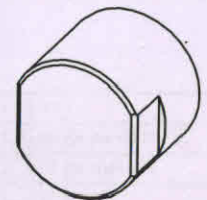
Filename: W4R52-21

		0.001		ST	1,2083
Materialnummer/ Material number	Materialzustand/ Material description	Werkstoff/ Material			
Schuster/Manufacturer/Co. Copyright	Allgemeintoleranz/General tolerance	Oberflächenbeschaffenheit/Surface ce texture	Kanten/ Edges		
DIN ISO 16016	DIN ISO 2768-mK	DIN EN ISO 1302	DIN ISO 13715		
gezeichnet/Drawn by	Konstrukteur/Constr. eng.	PV/Product Resp.	Maßstab/Scale	Format/Format	
Leuthäuser_M	Leuthäuser_M	Böemeke_R	1:1	A3	
Materialnummer/Material number		Dokumentart/Document type			
zu W4R52-21		Einzelteilzeichnung/ detail drawing			
Materialbezeichnung/Material description		And./Rev. Datum/Date		Blatt/Sheet	
ottobock. Dttobock SE & Co. KGaA Duderstadt		Aufnahme Socket		6	20180509 2/5

32

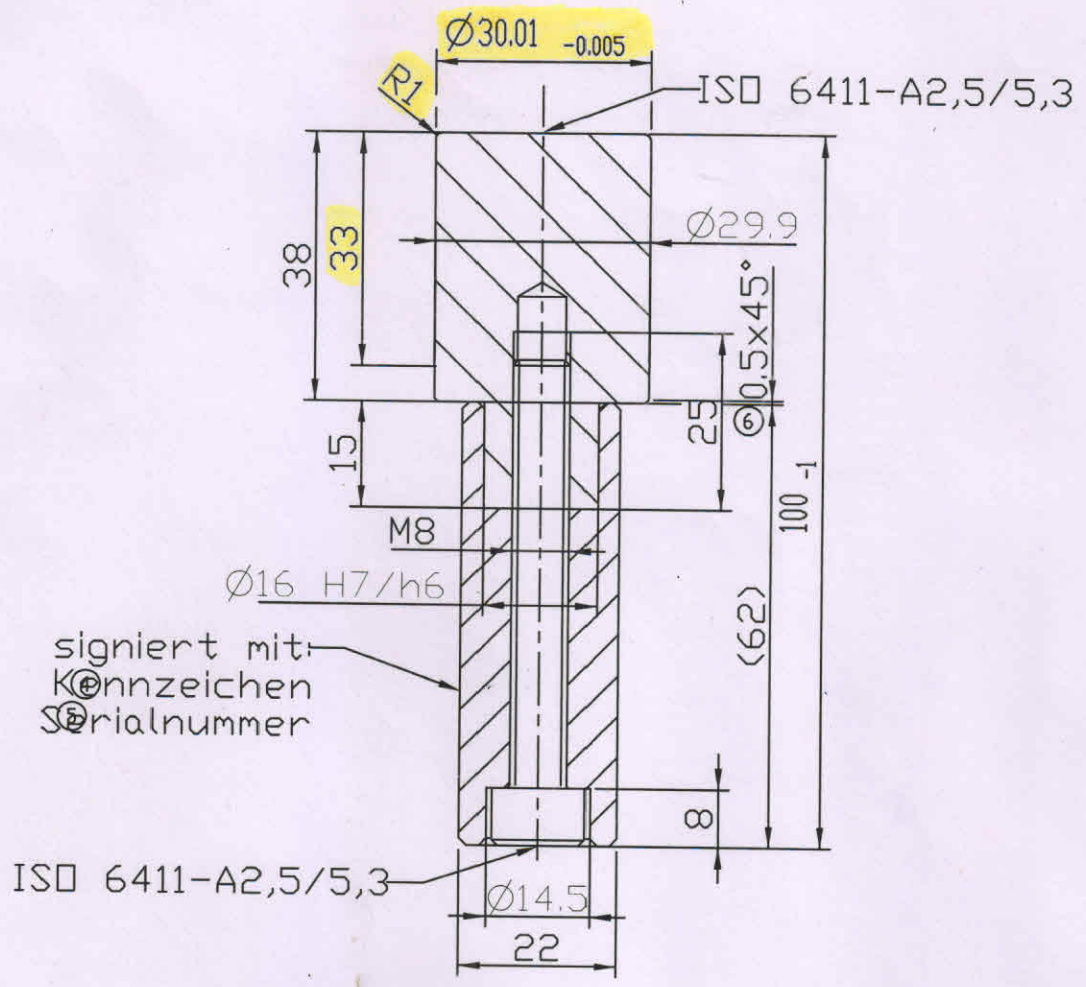


-gehärtet + angelassen 55+5HRC
 -fehlende Maße nach CAD

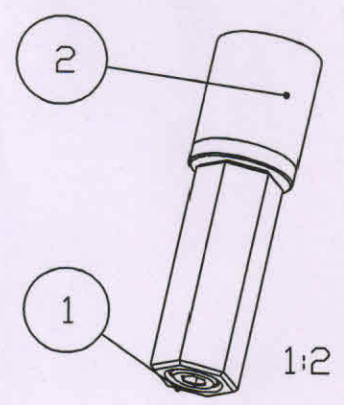


504U2083=40.8	Rundstahl Präzision Warmgewalzt	0.001	ST	L2083
Materialnummer/ Material number	Materialtext/ Material description	Empf./ Receiver	Werkstoff/ Material	
Schutzrecht/ Copyright	Allgemeine Toleranzen/ General tolerance	Oberflächenbeschaffenheit/ Surface texture	Kennlinie/ Edges	
DIN ISO 16016	DIN ISO 2768-mK	DIN EN ISO 1302	DIN ISO 13715	
Gezeichnet/Drawn by	Konstrukteur/Constr. eng.	PV/Product Resp.	Maßstab/Scale	Format/Format
Leuthäuser_M	Leuthäuser_M	Böemeke_R	1:1	A3
	Materialnummer/Material number		Dokumentart/Document type	
ottobock.	zu W4R52-21		Einzelteilzeichnung/ detail drawing	
Ottobock SE & Co. KGaA Duderstadt	Materialbezeichnung/Material description		Ind./Rev.	Datum/Date Blatt/Sheet
	Aufnahme rund Socket round		6	20180509 5/5

Filename: W4R52-21



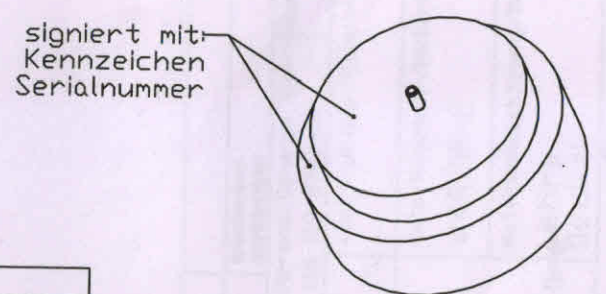
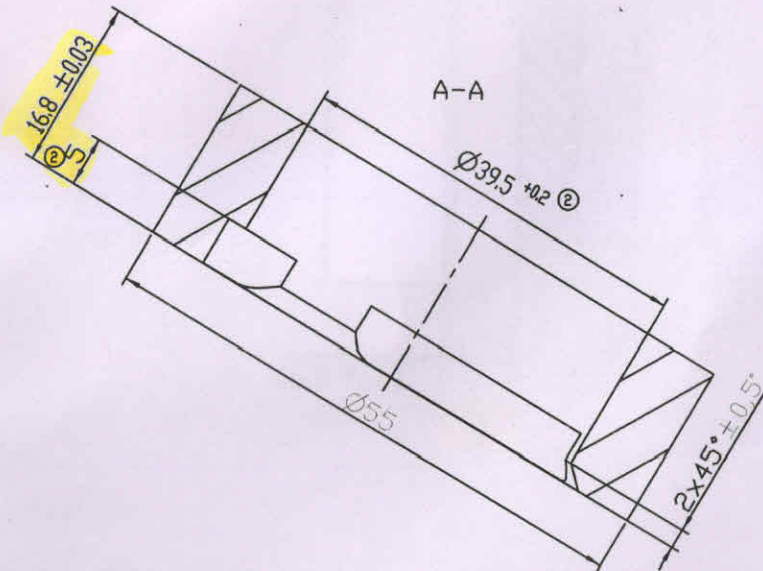
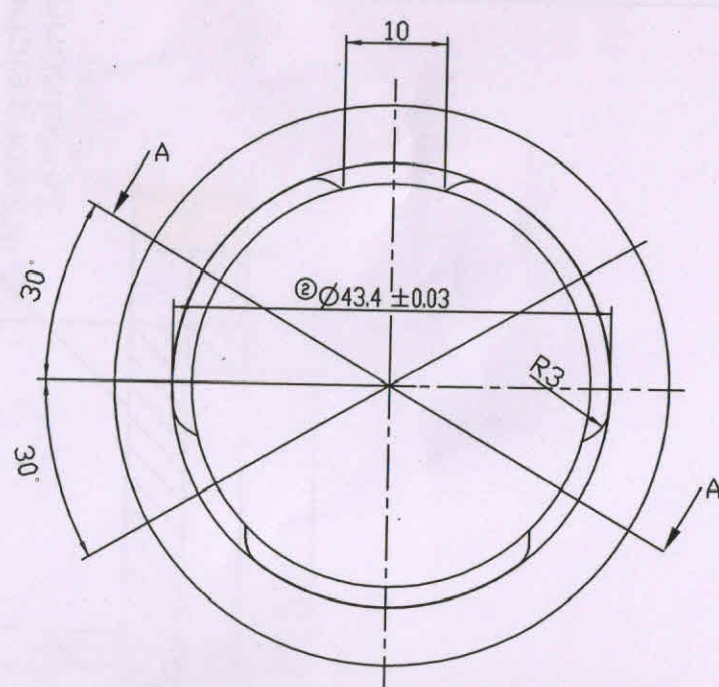
signiert mit:
Könnzeichen
Serialnummer



Pos. 2 gehärtet 65 HRC
nicht bemaßte Fasen 1x45°

2	zu W4R52-9	Dorn	1	ST	1.3302
1	zu W4R52-9	Griff	1	ST	ALU-Sechskant
Pos.	Material	Materialkurztext	Menge	ME	Werkstoff
Änderungen:		Schutzvermerk nach DIN ISO 16016 beachten			
03	Hinweis	Datum	Name	Allgemeintoleranz DIN ISO 2768 mK	
04		20090707	Rogge	Oberfläche DIN ISO 1302 Reihe 3	
05		20110817	Rogge	verantw. TZ	20090707 Rogge
06		20120606	Rogge	Konstrukt.	19910429 Goebel
		20120611	Rogge	PV	20090707 Bömeke
				Geprüft PV	20090707 Bömeke
				HealthCare GmbH Duderstadt	
		Maßstab:	W4R52-9 Lehrdorn		Blatt: 1/1
		1:1			Geometriedarstellung
					Nennmass

30

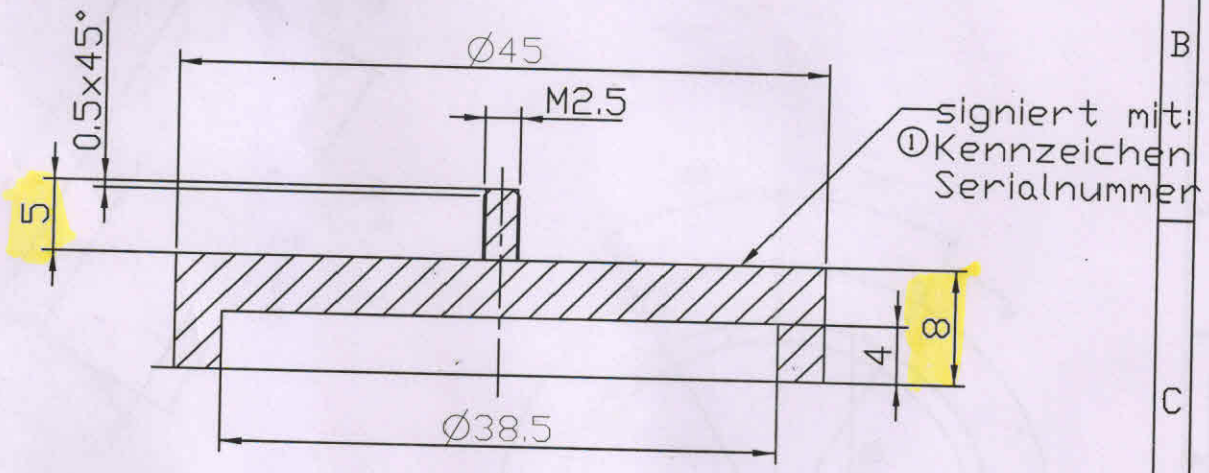


Nicht kalibriert

	Lagerort	:
	Prüfintervall:	

Pos.	Materialnummer/ Material number	Materialtext/ Material description	Impf/ Qty	Stk/ Lot	Werkstoff/ Material spec.
Schutzvermerk/Copyright: Intoleranz/General Toleranz: DIN ISO 2768-mK; Oberflächenbeschaffenheit/Surface Finish: DIN EN ISO 1302; Werkstückbockanten/Edges: DIN ISO 13715					
Gezeichnet/Drawn by Tetzlaff		Konstrukteur/Constr. eng. -	PV/Product Resp. Boeneke		Maßstab/Scale 2:1 Format/Format A3
ottobock.		Materialnummer/Material number W4R38-2		Dokumentart/Document type Einzelteilzeichnung/detail drawing	
Otto Bock HealthCare GmbH Duderstadt		Materialbezeichnung/Material description Lehre		And./Rev. 3	Datum/Date 20170831 Blatt/Sheet 1/2

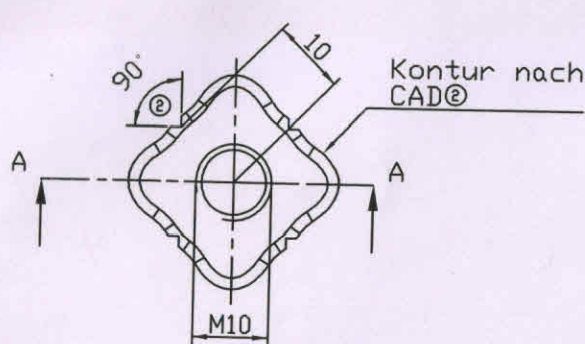
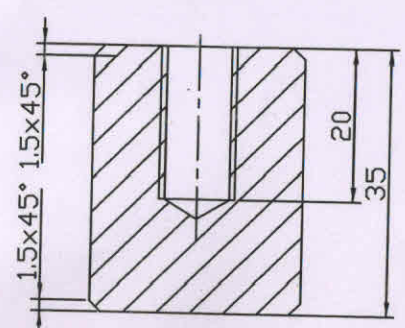
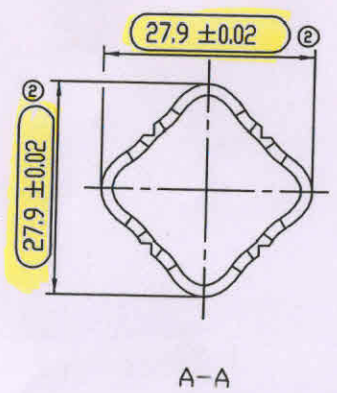
Titelname: W4R38-2



Pos.	Materialnummer/ Materialnumber	Materialkurztext/ Materialdescription	Menge/ qty	ME/ Unit	Verkstoff/ Material spec.
	Schutzvermerk/Copyright DIN ISO 16016	Abmaßtoleranz/General DIN ISO 2768-mK	Flächenbeschaffenheit/Surface DIN EN ISO 1302	Vertiefte Kanten/Edges DIN ISO 13715	
Gezeichnet/Drawn by Tetzlaff		Konstrukteur/Constr. eng. -	PV/Product Resp. Boemeke	Maßstab/Scale 2:1	Format/Format A4
ottobock.		Materialnummer/Materialnumber W4R38-2		Dokumentart/Document type Einzelteilzeichnung/detail drawing	
		Materialbezeichnung/Materialdescription Lehre Deckel		Änd./Rev 3	Datum/Date 20170831
Otto Bock HealthCare GmbH Duderstadt				Blatt/Sheet 2/2	

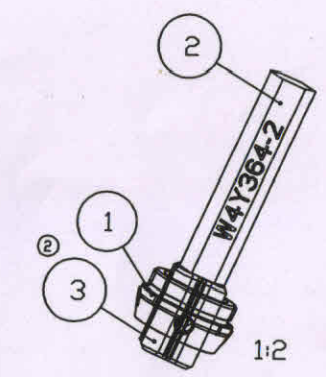
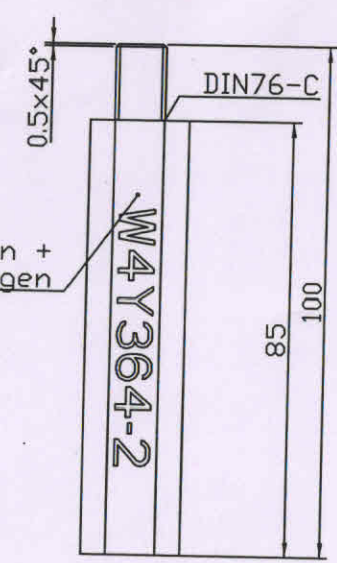
Filename: W4R38-2

28



-gehärtet & angelassen
50+5HRC

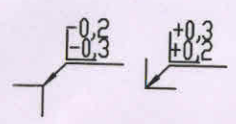
Kennzeichen +
Sn anbringen

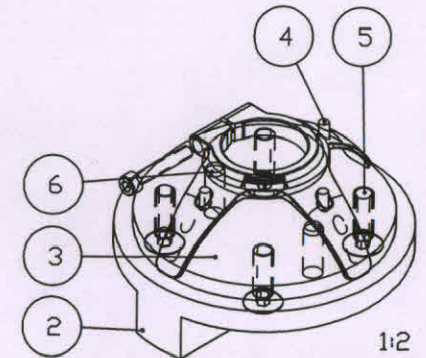
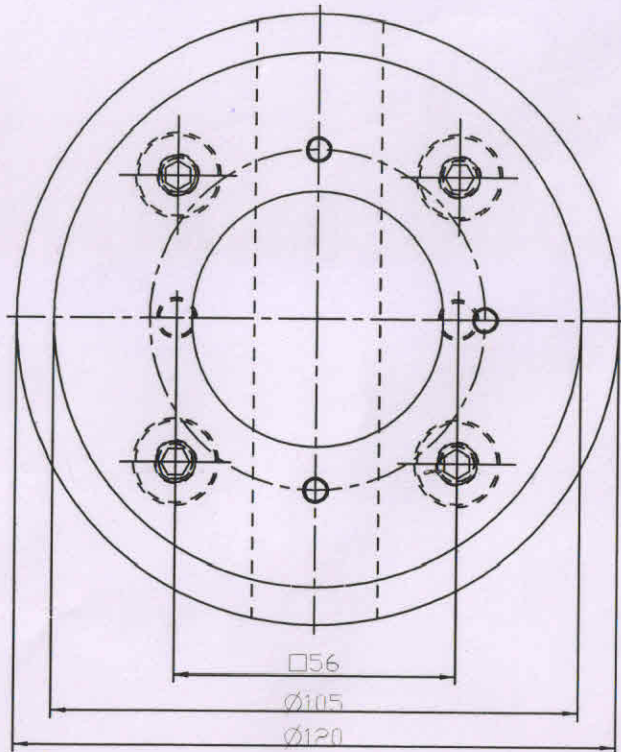
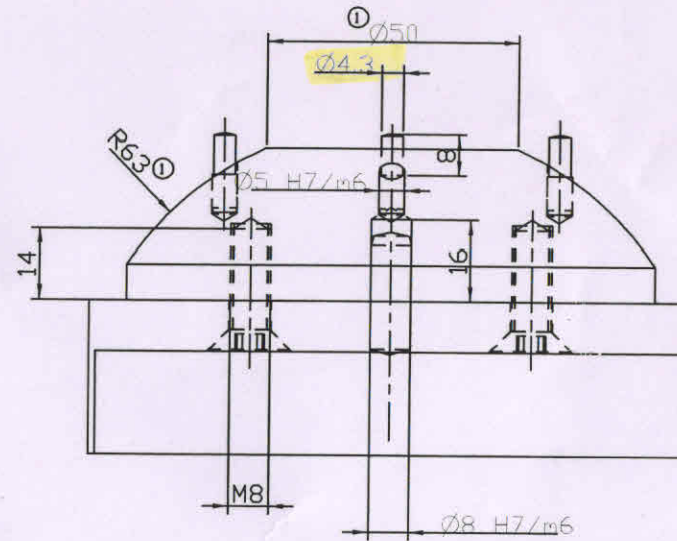
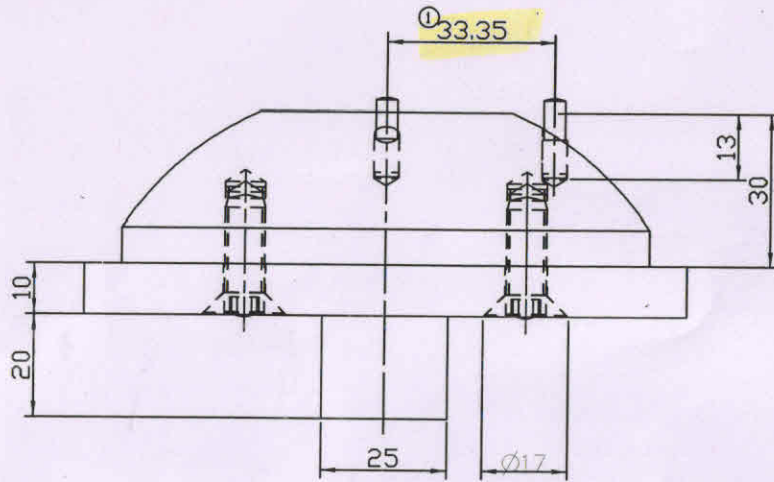


	Lagerort	
	Prüfintervall	

3	zu W4Y364-2	Lehre Gauge	1	ST	1.2083
2	zu W4Y364-2	Griff Handle	1	ST	EN AW-7075
1	W4Y364	Rohling, NiRo blank part, NiRo	-	ST	
Materialnummer/Material number		Materialart/			
Schutzrecht/Co. Allg. / Schutzrecht/General		Oberflächenbeschaffenheit/Surface texture			
DIN ISO 16016		DIN ISO 2768-mK	DIN EN ISO 1302	DIN ISO 13715	
Gezeichnet/Drawn by		Konstrukteur/Constr. eng.	PV/Product Resp.	Maßstab/Scale Format/Format	
Leuthaesser_M		Doering_M	Boemeke_R	3:2	A3
Materialnummer/Material number		W4Y364-2		Dokumentart/Document type	
Materialbezeichnung/Material description		Stecklehre Plug in gauge		Baugruppenzeichnung/ assembly drawing	
Otto Bock HealthCare GmbH Duderstadt		Stecklehre Plug in gauge		2	20170407 1/1

Dateiname: W4Y364-2

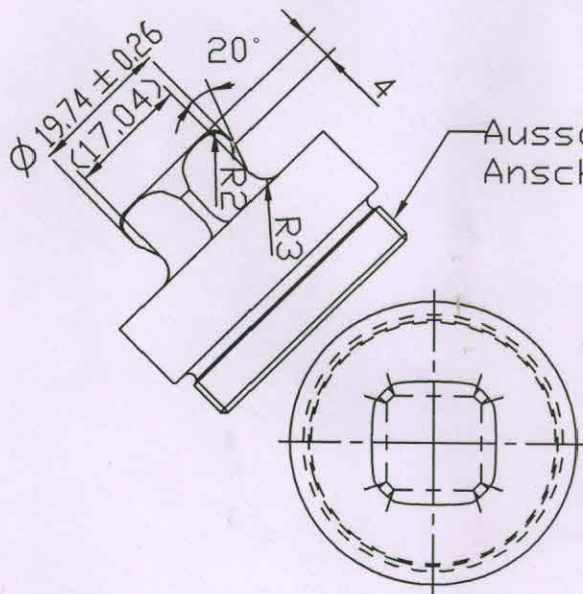
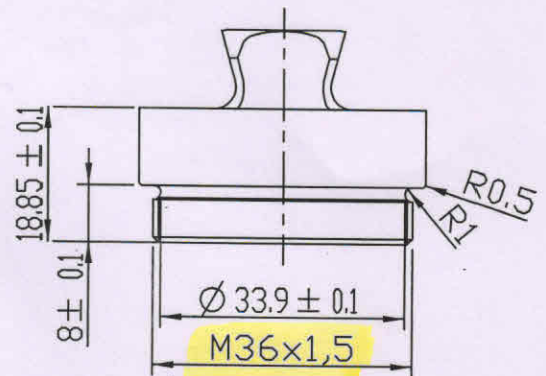
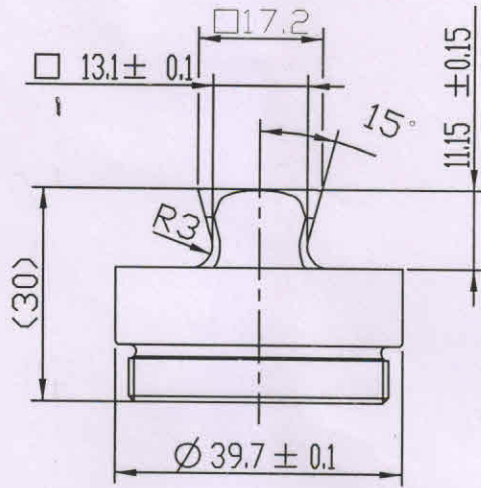




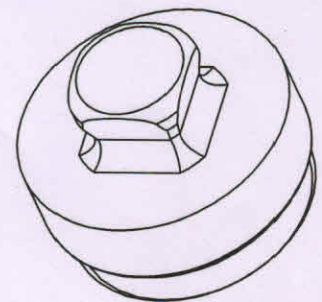
Kennzeichen anbringen

6	zu W4Y366-4	Zylinderstift Fa. Hasco	2	ST	Bestell-Nr.: Z25/8x24
5	zu W4Y366-3	Senkschraube Fa. Hasco	4	ST	Bestell-Nr.: Z33/8x25
4	506A8=5X22	Zylinderstift, DIN 6325	3	ST	-
3	zu W4Y366-4	Kugelaufnahme	1	ST	1.2842
2	zu W4Y366-4	Grundplatte	1	ST	603A1=120
1	4Y366	Rohling, bearbeitet	-	ST	-
Pos.	Material	Materialkurztext	Menge	ME	Verstoff
Änderungen:		Schutzvermerk nach DIN ISO 16016 beachten! Kanten DIN ISO 13715			
01	Änderung	Datum	Allgemeintoleranz DIN ISO 2768-mK		
	Aktiv	20130808	Oberfläche DIN EN ISO 1302		
			verantwortl. TZ	20130425 Rogge	
			Konstrukt.	20130425 Rogge	
			PV	20130425 Böneke	
			Geprüft PV	20130808 Böneke	
			Maßstab:	W4Y366-4	
			1:1	Haltevorrichtung zum Drehmoment prüfen	
				Blatt:	1/1
				Geometriedarstellung	
				Nennmass	

Otto Bock HealthCare GmbH Duderstadt



Ausschussteite vom Gewindelehrring M36x1
Anschnäbeln soll möglich sein, aufschraub

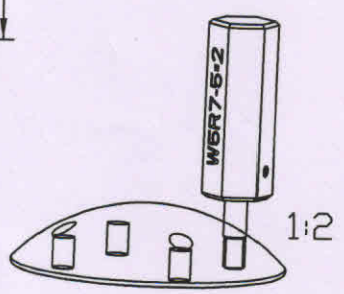
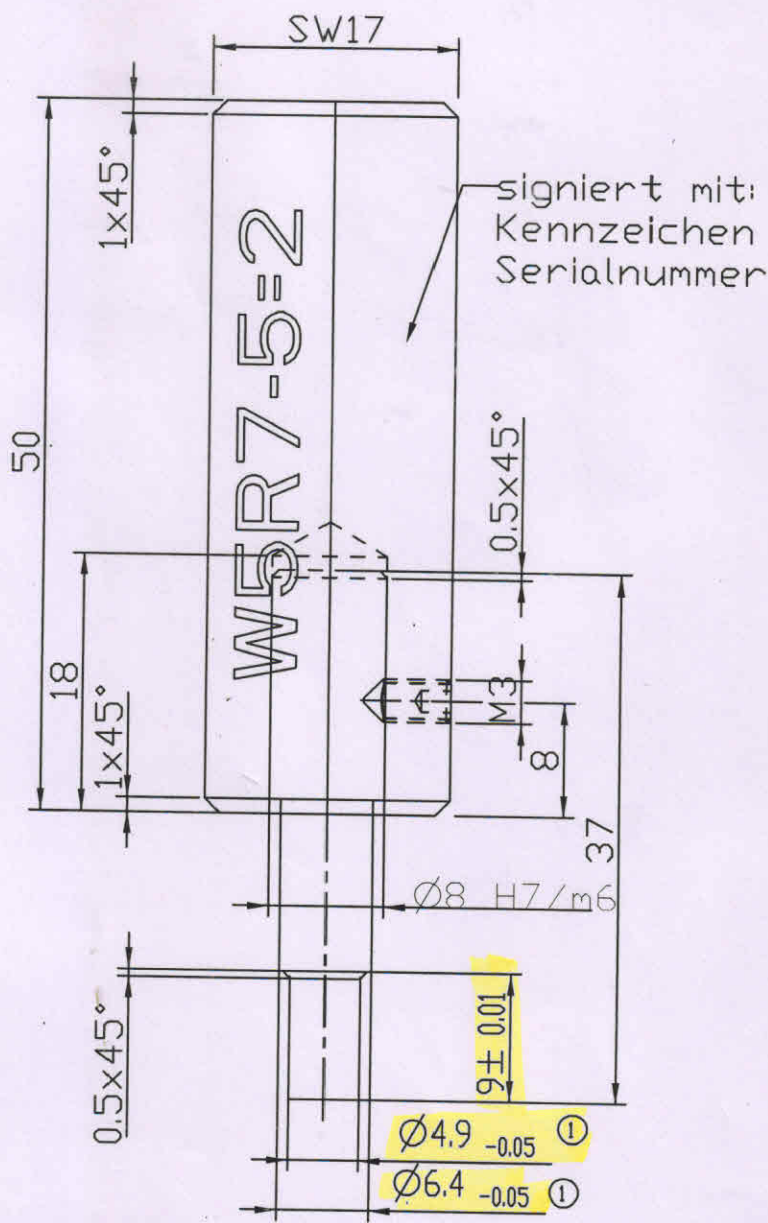


1:1

Kennzeichen anbringen

Pos.	Material	Materialkurztext	Menge	ME	Werkstoff
1.2842 oberflächengehär					
Änderungen:		Schutzvermerk nach DIN ISO 16016 beachten			
01	Hinweis	Datum	Name	Kanten DIN ISO 13715	
01	Aktiv	20130730	Rogge	Oberfläche DIN EN ISO 1302	
		verantwortl. TZ	20130426	Rogge	
		Konstrukt.	20130426	Rogge	
		PV	20130426	Bömeke	
		Geprüft PV	20130730	Bömeke	1
		Maßstab:	1:1		
			w4y367-1		
			Einsatz zum Drehmoment		
			Blatt:	1/1	
			Geometriedarstellung prüfen		
			Nennmass		

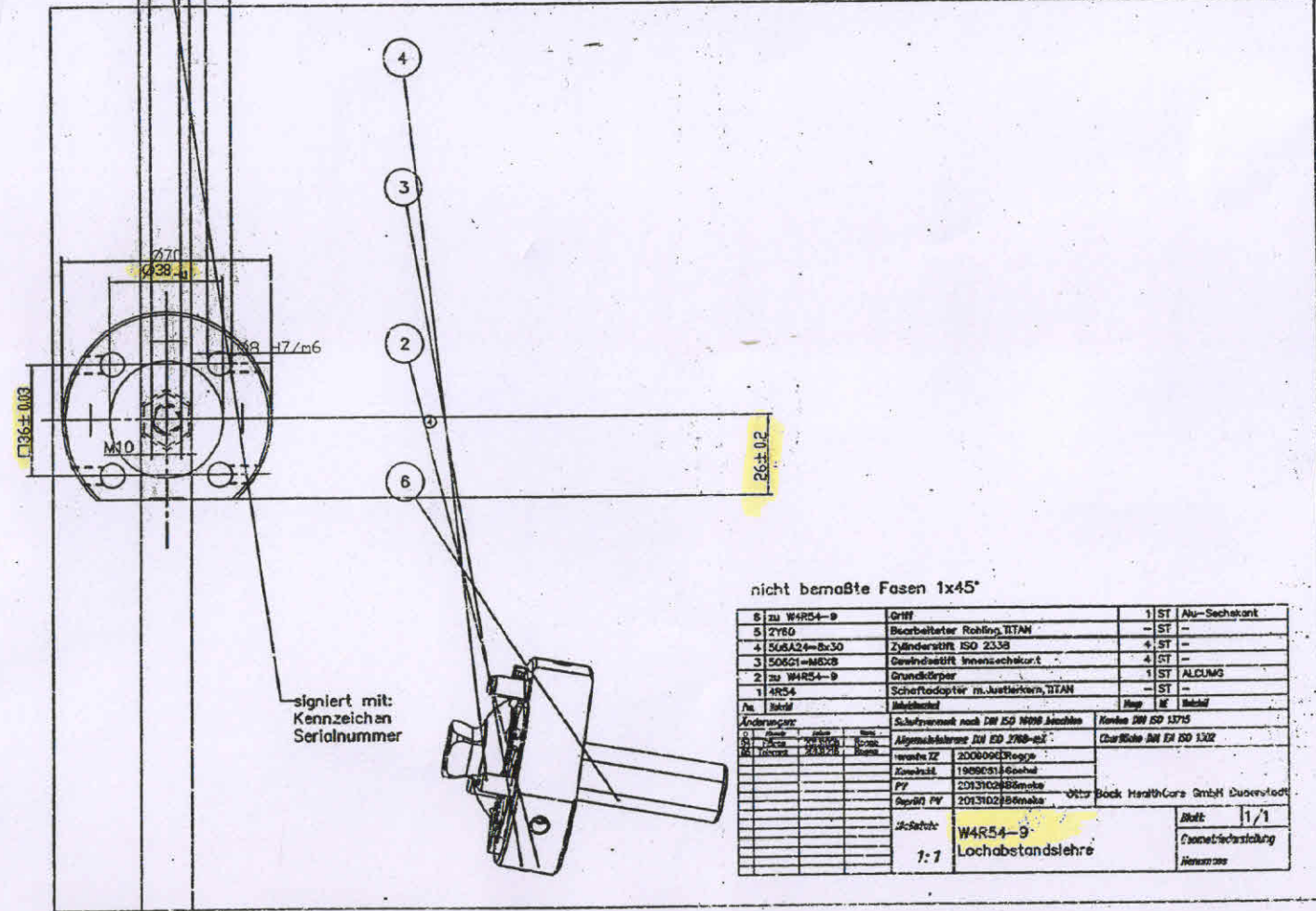
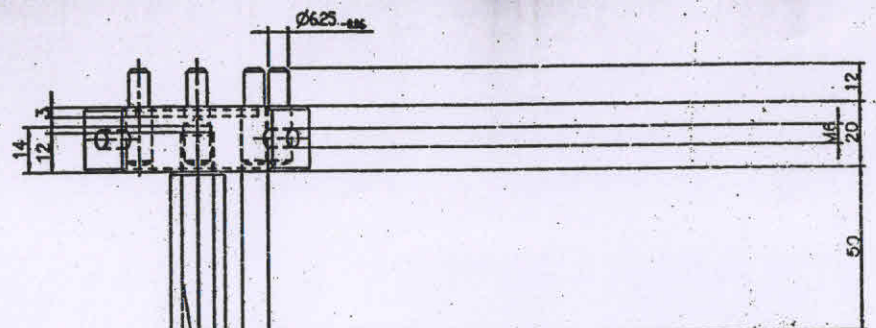
Otto Bock HealthCare GmbH Dudersta



Pos. 1 gehärtet 50HRC

3	5R7=2	Schaftansatz-Innenteil	-	ST	
2	zu W5R7-5=2	Griff	1	ST	ALU-Sechskant
1	zu W5R7-5=2	Drehteil	1	ST	1.2842
Pos.	Material	Materialkurztext	Menge	ME	Werkstoff
Änderungen:		Schutzvermerk nach DIN ISO 16016 beachten			
01	Hinweis	Datum	Name	Allgemeintoleranz DIN ISO 2768-mK	
		20110309	Rogge	Oberfläche DIN EN ISO 1302	
				verantwortl. TZ 20101022 Rogge	
				Konstrukt.	
				PV 20101022 Bömeke	
				Geprüft PV 20101022 Bömeke	
				HealthCare GmbH Duderstadt	
				Maßstab:	Blatt: 1/1
				2:1	W5R7-5=2 Lehre
					Geometriedarstellung
					Nennmass

10224

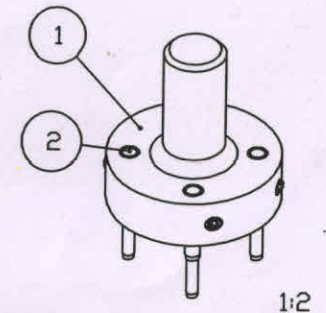
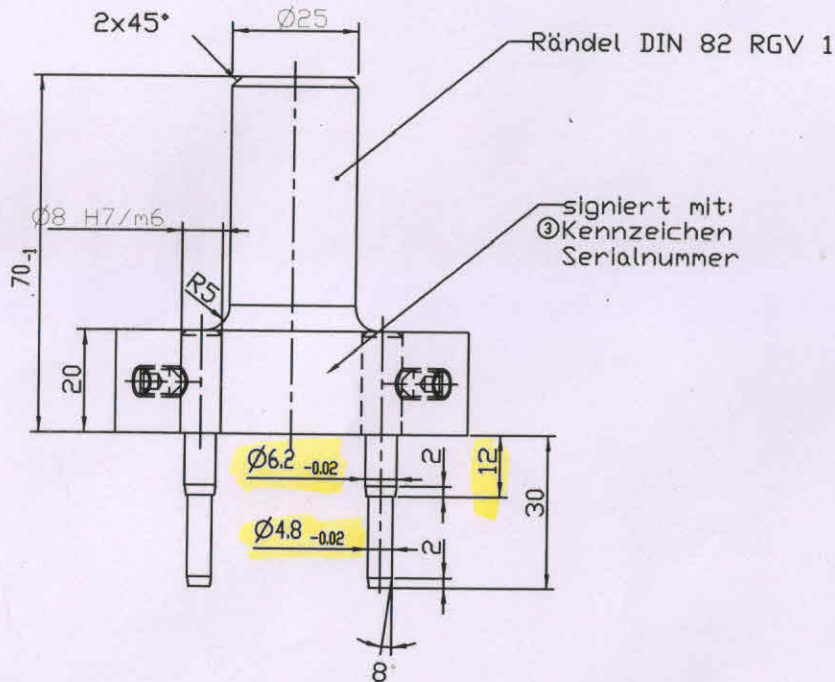
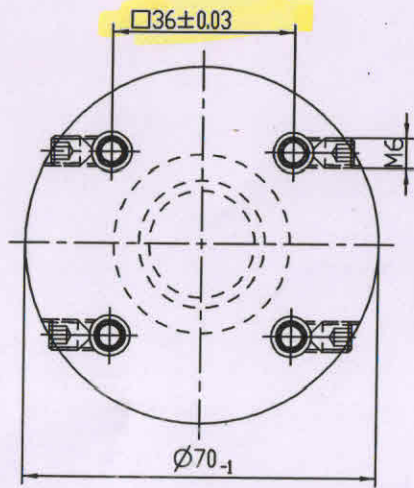


signiert mit:
Kennzeichen
Seriennummer

nicht bemaßte Fasen 1x45°

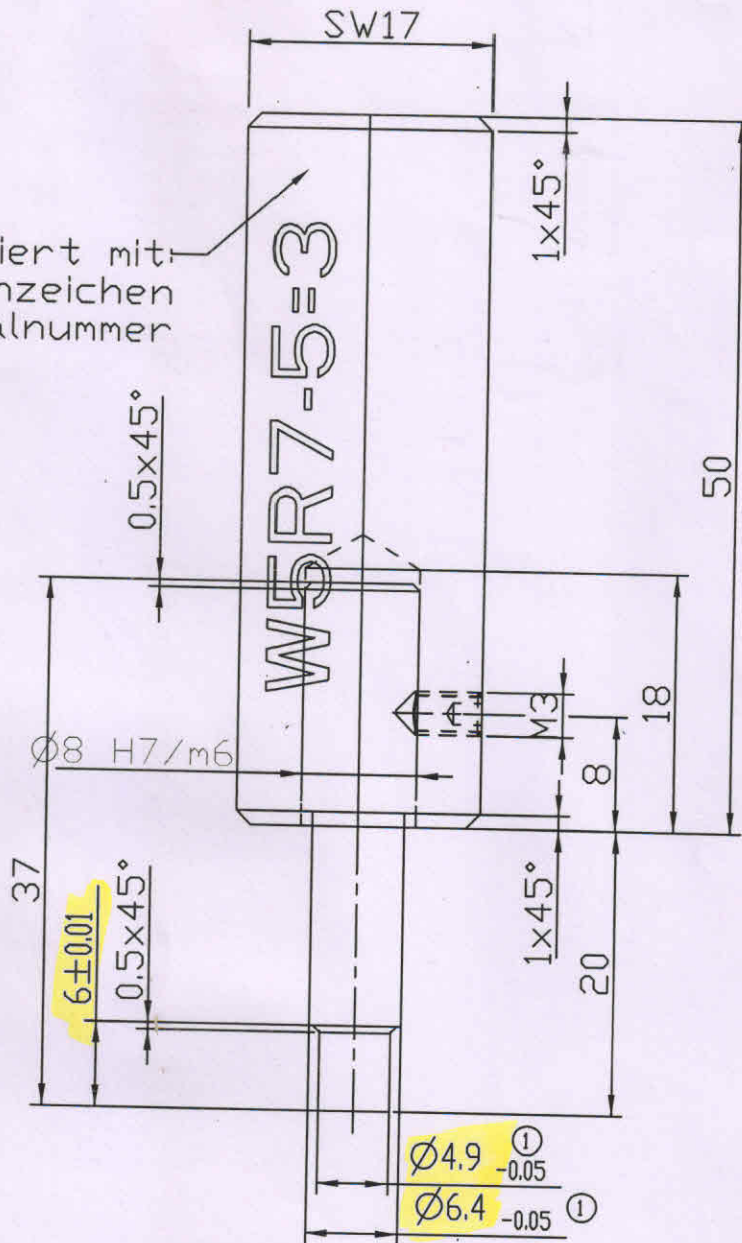
8	zu W4R54-9	Griff		1	ST	Alu-Sechskant
5	ZY80	Bearbeiteter Rohling, TITAN		-	ST	-
4	508A24-Bx30	Zylinderstift ISO 2338		4	ST	-
3	506G1-M8x28	Gewindestift Innensechskant		4	ST	-
2	zu W4R54-9	Grundkörper		1	ST	ALCLUNG
1	4R54	Scheitadapter m. Justierkeren, TITAN		-	ST	-
As	Stahl	Werkstoff		Reg	KE	Material
Anderes:		Schulfermarkt nach DIN ISO 9000		Kontak DIN ISO 13715		
01	01	01	01	Allgemeinlehre DIN ISO 2768-01		
02	02	02	02	Charakter DIN EN ISO 1302		
03	03	03	03	Formzahl 20060603		
04	04	04	04	Kombi 19990311		
05	05	05	05	PV 20131028		
06	06	06	06	PV 20131028		
07	07	07	07	Bock HealthCare GmbH Duesenrod		
08	08	08	08	Blatt 1/1		
09	09	09	09	Technische Zeichnung		
10	10	10	10	Herausgeber		
Zusatz:		W4R54-9				
1:1		Lochabstandslehre				

23

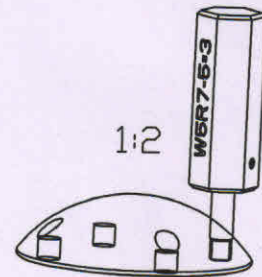


zku W5R6-1	Zylinderstift DIN 6325 /Ø8x60	ST	
zku W5R6-1	Grundkörper	ST	AlCuMg
Pos.	Material	Materialkurztext	Menge ME Werkstoff
Änderungen:		Schutzvermerk nach DIN ISO 16016 beachten	Ersatz für alte Zeichnung v. 19890322
0			
01	19920521	Kraner H	Allgemeintoleranz DIN ISO 2768 mK
02	20070112	Breitlauch	verantwortl. 20070112 Breitlauch
03	20090827	Kogge	Konstrukt. Goebel
		PV	20090827 Christ
		Geprüft PV	20090827 Christ
			HealthCare GmbH Duderstadt
	Maßstab:	W5R6-1	Blatt: 1/1
	1:1	lochabstandslehre	Geometriedarstellung
			Nennmass

signiert mit:
Kennzeichen
Serialnummer

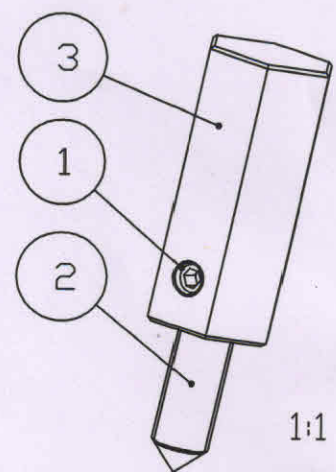
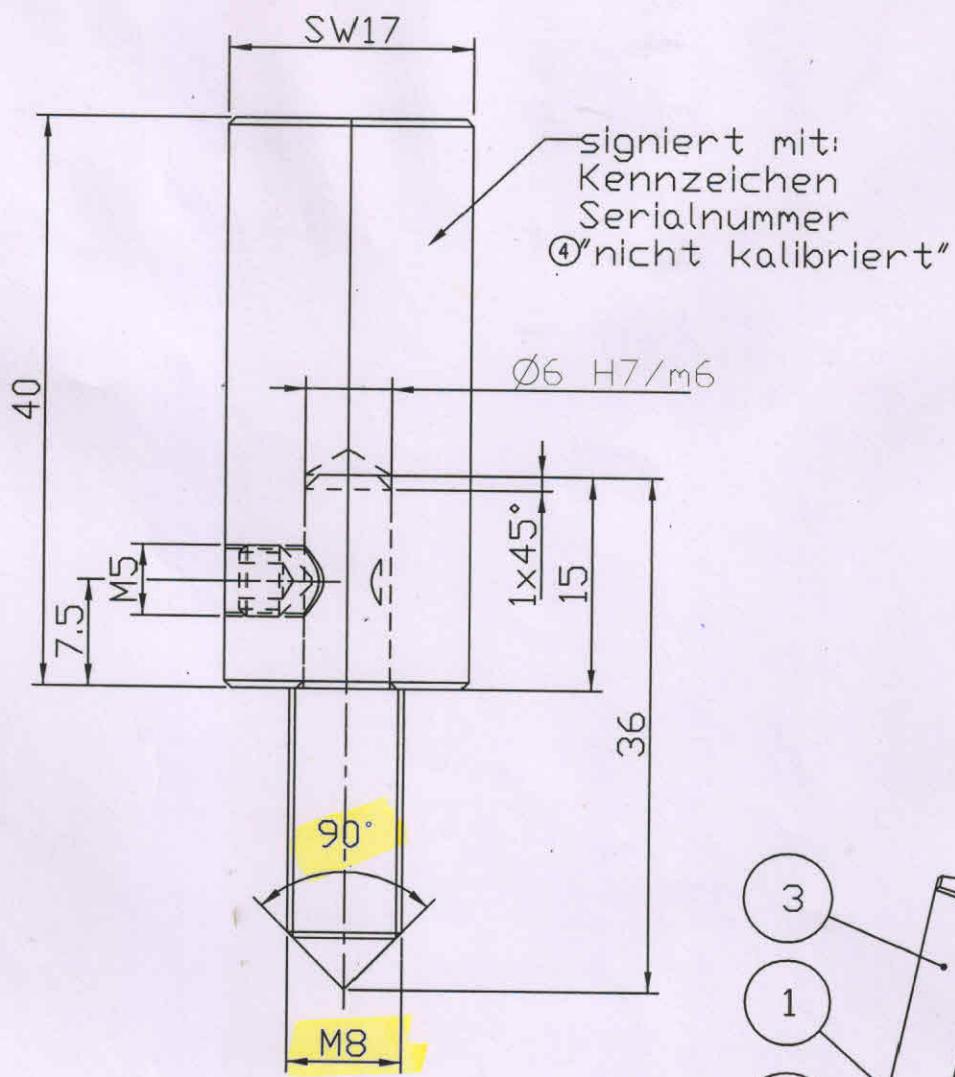


Pos. 1 gehärtet 50HRC



4	zu W5R7-5=3	Griff	1	ST	
3	zu W5R7-5=3	Drehteil	1	ST	
2	5R7=3	Schaftansatz-Innentell Modular Adap.Inner Piece	1	ST	
1	506G1=M3X6	Gewindestift Innensechskant Hexagon Grub Screw	1	ST	Stahl, verzinkt
Pos.	Materialnummer/ Material number	Materialkurztext/ Material description	Menge/ Qty	ME/ Unit	Werkstoff/ Material spec
Schutzvermerk/Co. Allg.		toleranz/General	Oberflächenbeschaffenheit/Surfa- ce texture		Kanten/ Edges
DIN ISO 16016		DIN ISO 2768-mK	DIN EN ISO 1302		DIN ISO 13715
gezeichnet/Drawn by		Konstrukteur/Constr. eng.	PV/Product Resp.	Maßstab/Scale	Format/Format
Doering_M		Doering_M	Boemeke_R	2:1	A4
Materialnummer/Material number		W5R7-5=3		Dokumentart/Document type	
Materialbezeichnung/Material description		ehre		And./Rev.	Datum/Date
Ottobock SE & Co. KGaA Duderstadt				2	Blatt/Sheet 1/1

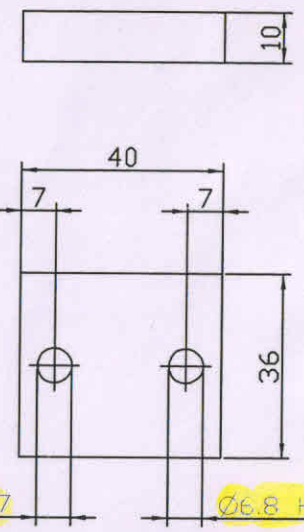
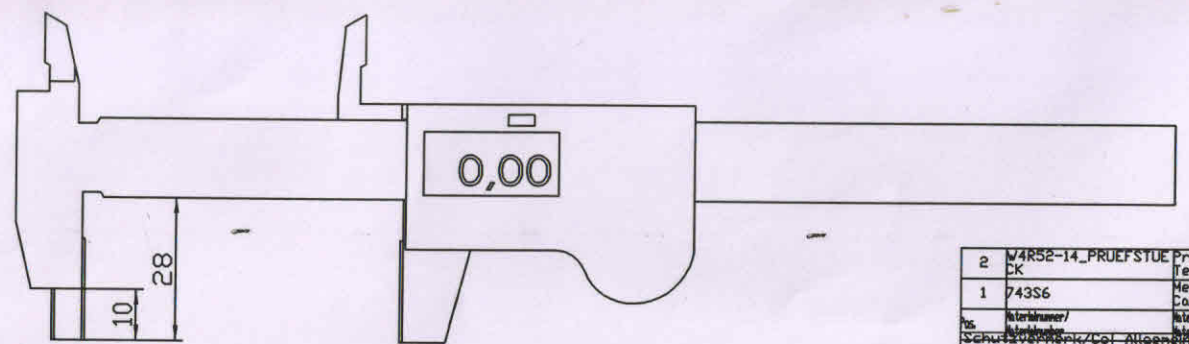
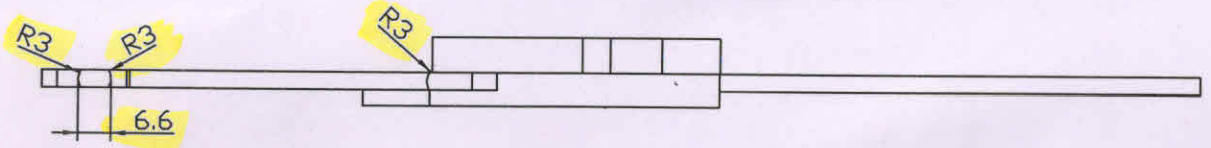
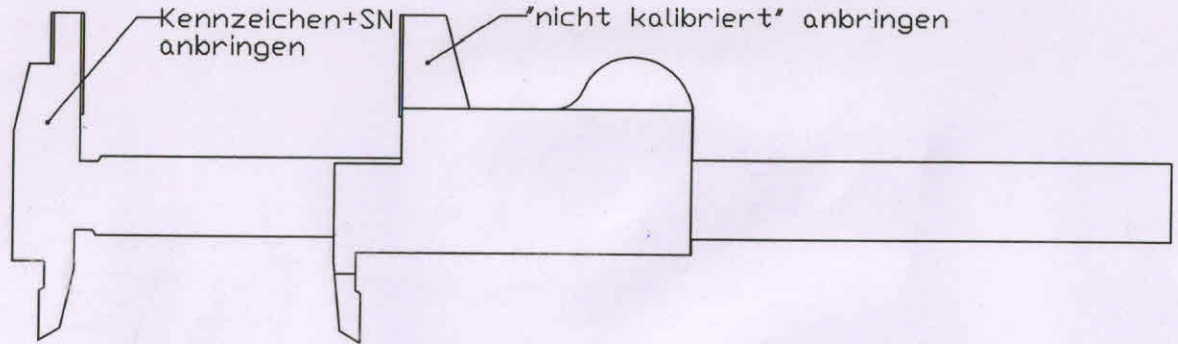
Filename: W5R7-5-3



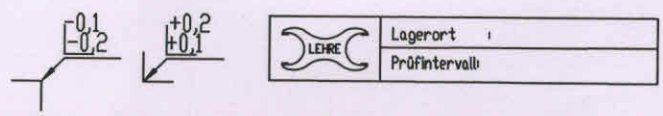
gehärtet 50HRC

3	zu W4R30-5	Griff	1	ST	Alu-Sechskant
2	zu W4R30-5	Gewindestift	1	ST	1.2842
1	506G1=M5X5	Gewindestift Innensechskant	1	ST	-
Pos.	Material	Materialkurztext	Menge	ME	Werkstoff
Änderungen:		Schutzvermerk nach DIN ISO 16016 beachten			
0	Hinweis	Datum	Name	Kanten DIN ISO 13715	
02		20090831	Rogge	Oberfläche DIN ISO 15002 Reihe 3	
03		20130219	Rogge		
04	n. kalibr.	20130426	Rogge		
		verantwortl. TZ	20090831	Rogge	
		Konstrukt.	20030505	Gorbel	
		PV	20090831	Bömeke	
		Geprüft PV	20090831	Bömeke	Otto Bock HealthCare GmbH Dudersto
		Maßstab:	W4R30-5		Blatt: 1/1
		2:1	Lehre für 4R30=n4 zur Überprüf. Bohrun		Geometriedarstellung
					Nennmass

20

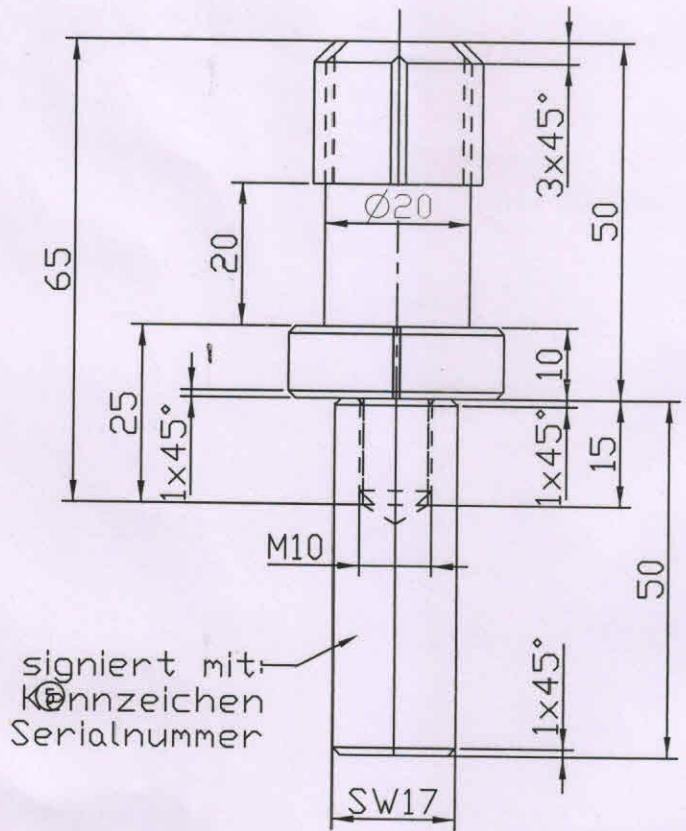


-gehärtet und angelassen 50+5HRC
 -Außenkanten 0,5x45°
 -Kennzeichen + SN +
 nicht kalibriert anbringen

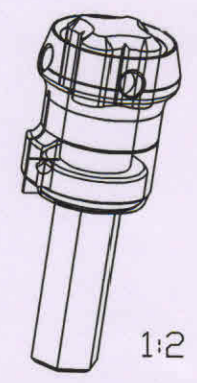
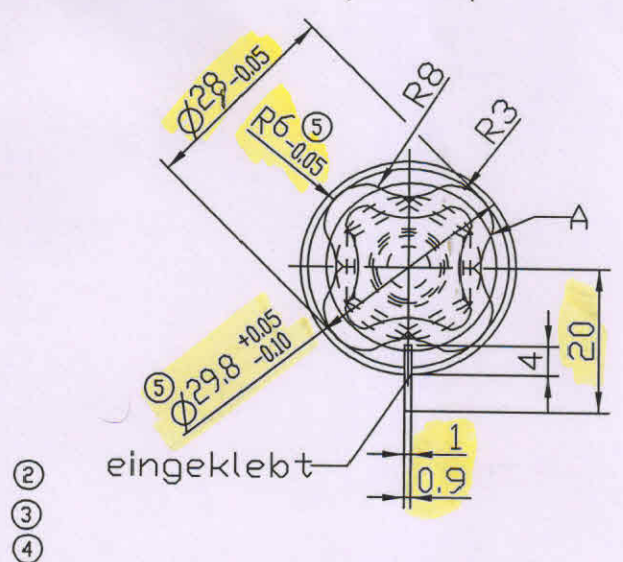
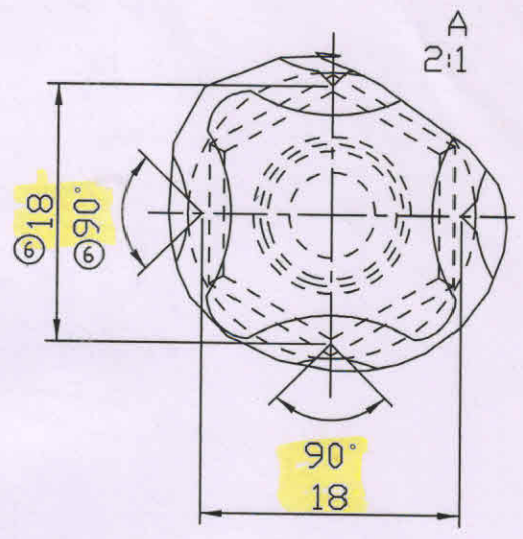


2	W4R52-14_PRUEFSTUECK	Pruefstueck Test piece	1	ST	L2083
1	743S6	Meßschieber (Digital) Caliper (Digital)	1	ST	
Zeichner/ Drawing		Kontrollierer/ Inspector		Hersteller/ Manufacturer	
Schutzrecht/Co. Copyright		Allgemeine Toleranzen/ General tolerance		Oberflächenbeschaffenheit/ Surface texture	
DIN ISO 16016		DIN ISO 2768-mK		DIN EN ISO 1302	
gezeichnet/Drawn by		Konstrukteur/Constr. eng.		Maßstab/Scale	
Leuthaeusser_M		Leuthaeusser_M Bömeke_R		1:1	
Materialnummer/ Material number		W4R52-14		Dokumentart/ Document type	
Materialbezeichnung/ Material description		Meßschieber mit Prüfstück Caliper with test piece		Baugruppenzeichnung/ assembly drawing	
Dito Bock HealthCare GmbH Duderstadt		And./Rev.		Datum/Date	
		2		20170906	
				Blatt/Sheet 1/1	

Filename: W4R52-14

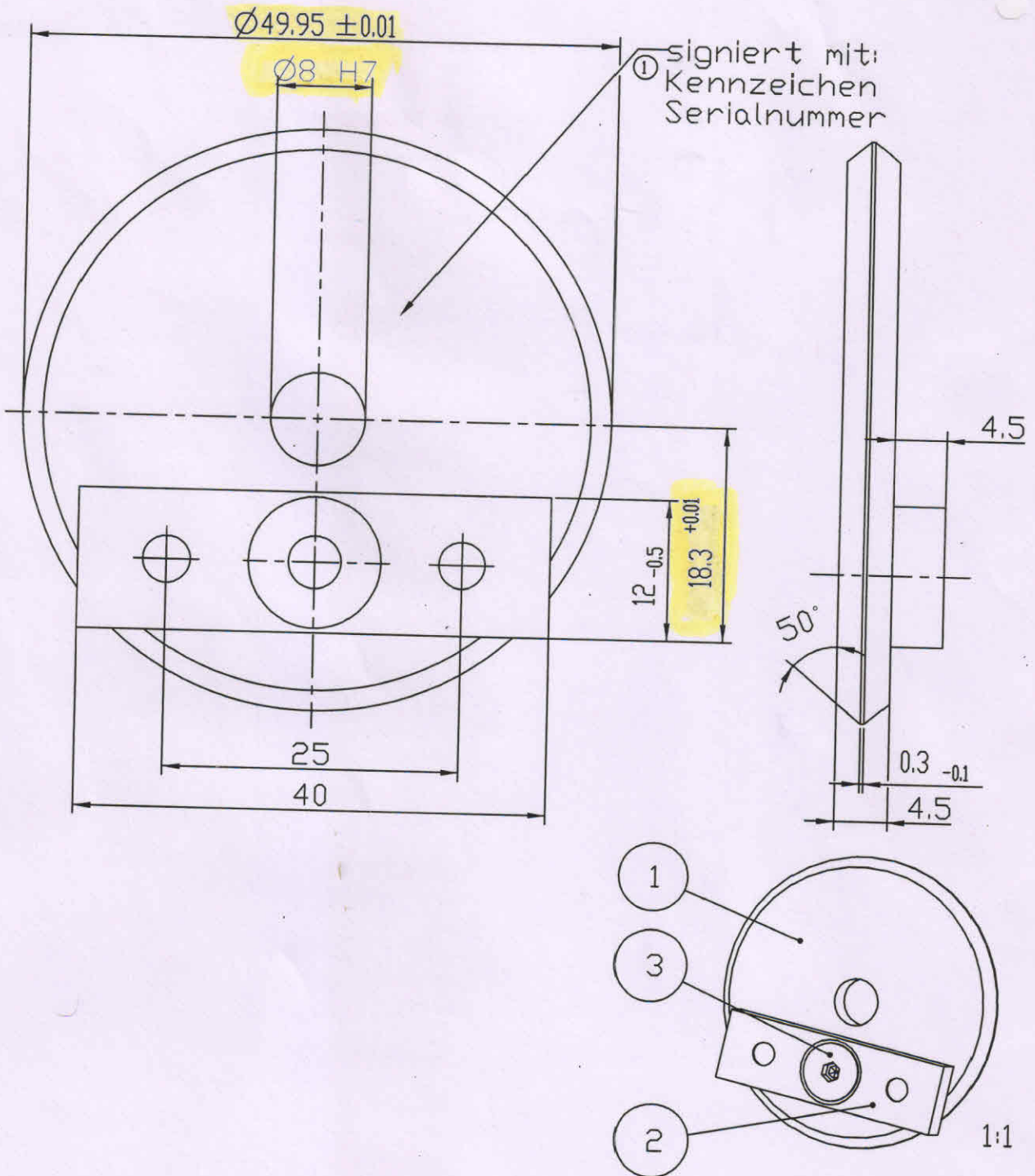


signiert mit:
Kennzeichen
Serialnummer



Aufnahme Pos.2 50HRC härten

4	zu W4R53-11	Griff	1	ST	ALU-Sechskant	
3	zu W4R53-11	Blech	1	ST	1.4301	
2	zu W4R53-11	Aufnahme	1	ST	1.2842	
1	4Y57=N1	Rohling, Titan	-	ST		
Pos.	Material	Materialkurztext	Menge	ME	Werkstoff	
Änderungen:		Schutzvermerk nach DIN ISO 16016 beachten				
01	Hinweis	Datum	Name	Allgemeintoleranz DIN ISO 2768-mK		
02		20050128	Breitlauch	Oberfläche DIN EN ISO 1302		
03		20080811	Eberhardt	verantwortl. TZ	20000822 Kramer_M	
04		20081007	Breitlauch	Konstrukt.	20000822 Goebel	
05		20090127	Breitlauch	PV	20000808 R.Bömeke	
06		20101105	Kroll	Geprüft PV	20090120 R.Bömeke	
		20110607	Rogge	HealthCare GmbH Duderstadt		
Maßstab:		W4R53-11			Blatt:	1/1
1:1		Lehre für R6 Innenkontur			Geometriedarstellung	
					Nennmass	

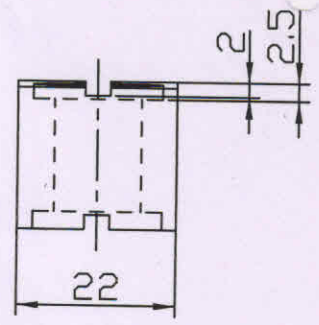
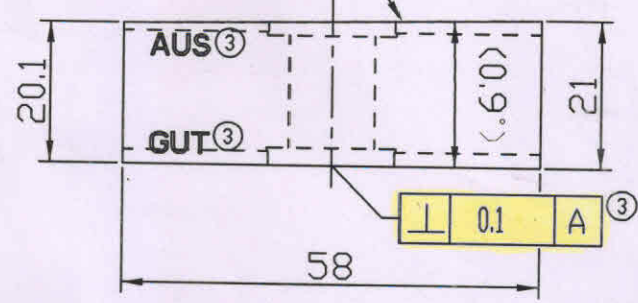


① signiert mit:
Kennzeichen
Serialnummer

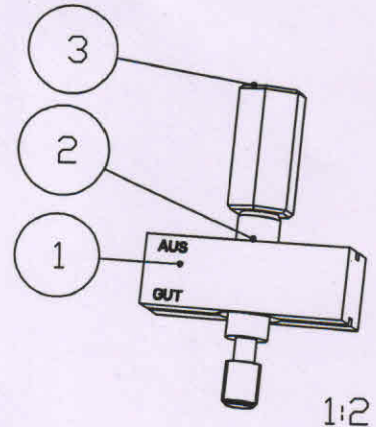
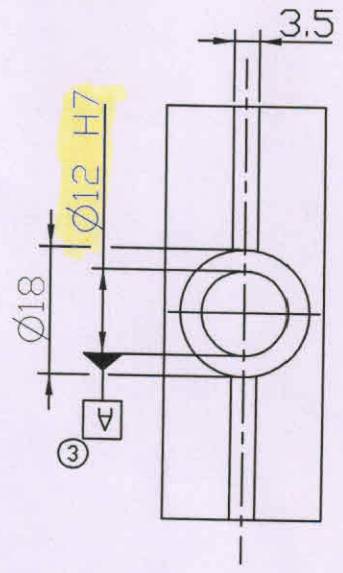
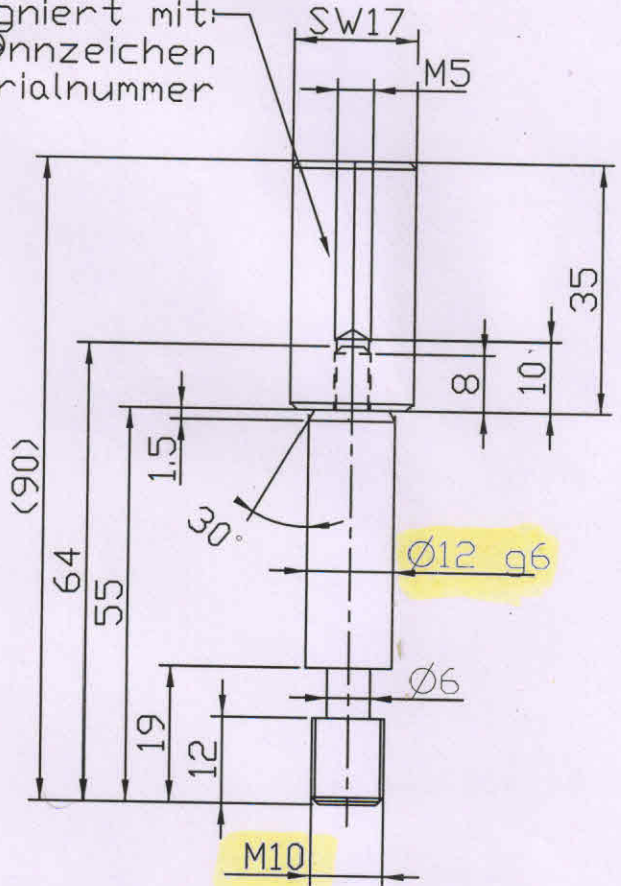
3	501S71=	Senkschraube DIN7991-verz.-	1	ST		
2	zuW4R53-3	Anschlag	1	ST	1.2842	
1	zuW4R53-3	Lehrring	1	ST	1.2842	
Pos.	Material	Materialkurztext	Menge	ME	Verkstoff	
Änderungen:		Schutzvermerk nach DIN ISO 16016 beachten				
01	Hinweis	Datum	Name	Ersatz für alte Zeichnung vom 01.1		
		20090713	Rogge	Allgemeintoleranz DIN ISO 2768 mK		
				Oberfläche DIN ISO 1302 Reihe 3		
				verantw. TZ 20090713 Rogge		
				Konstrukt. 19891101 Goebel		
				PV 20090713 Bömeke		
				Geprüft PV 20090713 Bömeke		
Maßstab:		W4R53-3			Blatt:	1/1
2:1		Lehre			Geometriedarstellung	
					Nennmass	

HealthCare GmbH
Duderstadt

signiert mit:
Kennzeichen
Serialnummer



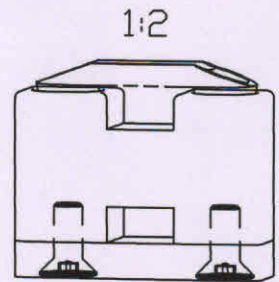
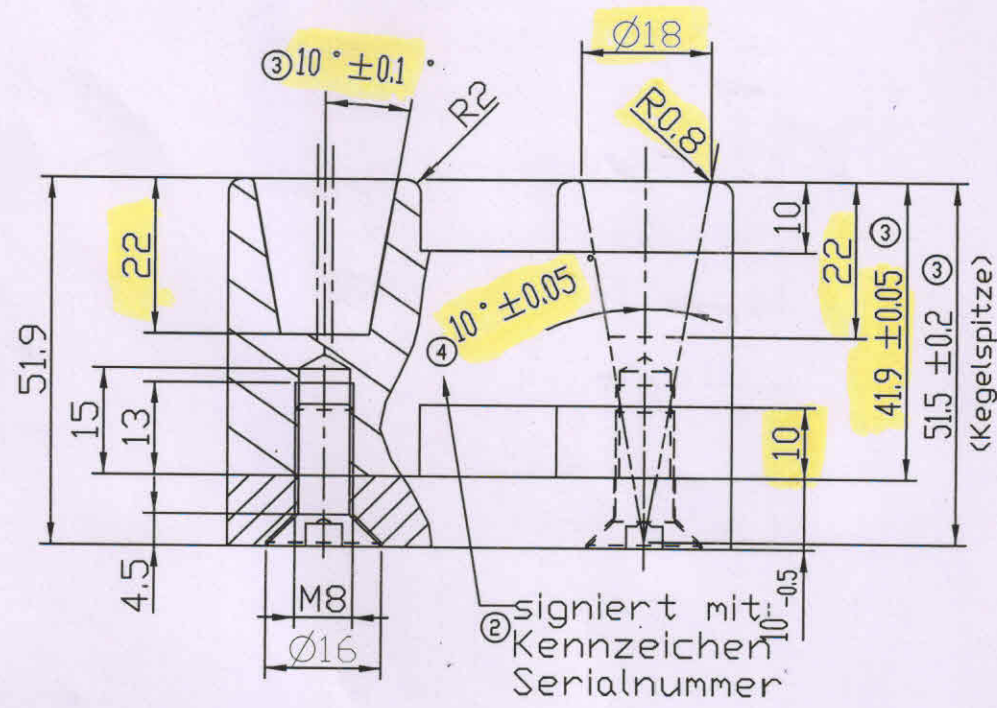
signiert mit:
Kennzeichen
Serialnummer



nicht bemaßte Fasen 1x45°
Pos. 1 und 2 gehärtet 50HRC
"GUT" und "AUS" signieren

3	zu W2R8-6=10	Griff	1	ST	ALU-Sechskant
2	zu W2R8-6=10	Gewindezapfen	1	ST	1.2842
1	zu W2R8-6=10	Lehre	1	ST	1.2842
Pos.	Material	Materialkurztext	Menge	ME	Verkstoff
Änderungen:		Schutzvermerk nach DIN ISO 16016 beachten Kanten DIN ISO 13715			
01	Hinweis	Datum	Name	Allgemeintoleranz DIN ISO 2768-mK Oberfläche DIN EN ISO 1302	
02		20100511	Rogge		
03		20110818	Rogge		
		20130725	Rogge		
			verantwortl. TZ	20110818	Rogge
			Konstrukt.	19820122	Goebel
			PV	20110818	Bömeke
			Geprüft PV	20110818	Bömeke
			Maßstab:	W2R8-6=10 ³ Lehre	
			1:1	Blatt:	1/1
				Geometriedarstellung	
				Nennmass	

HealthCare GmbH
Duderstadt



4	zu W4G113-12	Konusplatte	1	ST
3	zu W4G113-12	Grundplatte	1	ST
2	501S84=M8x20	Senkschraube Innensechskant Ni-ro	2	ST
1	4G113=N	Achshebel -Titan-LINKAGE BAR	1	ST

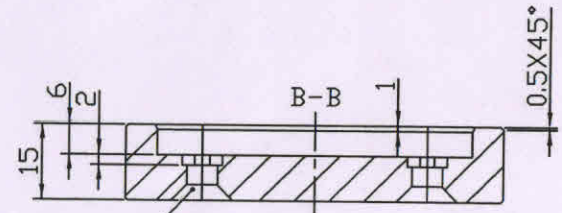
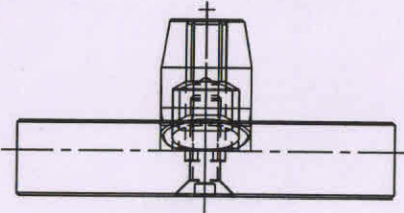
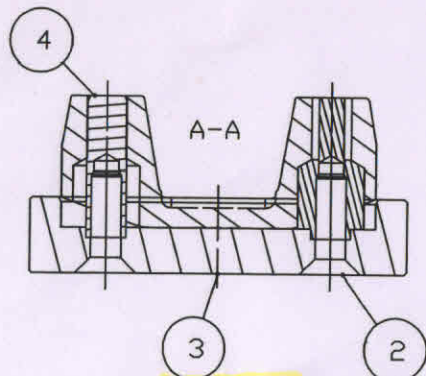
Pos.	Materialnummer/ Materialnumber	Materialkurztext/ Materialdescription	Menge/ qty	ME/ Unit	Verkstoff/ Material spec.
------	-----------------------------------	--	---------------	-------------	------------------------------

Schutzvermerk/Copyright/Intoleranz/General Toleranz/ Oberflächenbeschaffenheit/Surface Verticall Edges		DIN ISO 16016	DIN ISO 2768-mK	DIN EN ISO 1302	DIN ISO 13715
--	--	---------------	-----------------	-----------------	---------------

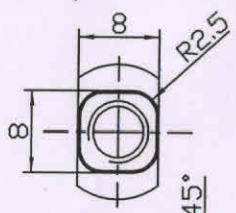
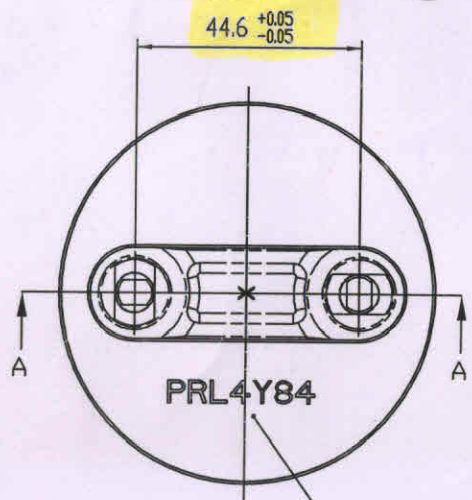
Gezeichnet/Drawn by Doering_M		Konstrukteur/Constr. eng. Doering_M	PV/Product Resp. Eckermann_M	Maßstab/Scale 1:1	Format/Format A4
ottobock.		Materialnummer/Materialnumber W4G113-12		Dokumentart/Document type	
ottobock SE & Co. KG Duderstadt		Materialbezeichnung/Materialdescription Konuslehre		Änd./Rev. 4	Datum/Date 20180814
				Blatt/Sheet 1/1	

Filename: W4G113-12

15

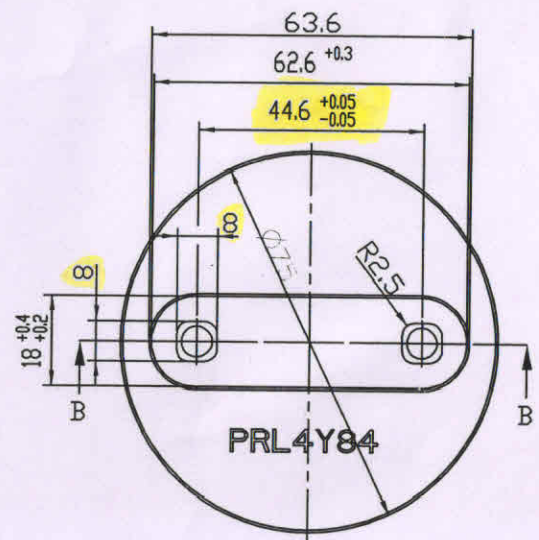
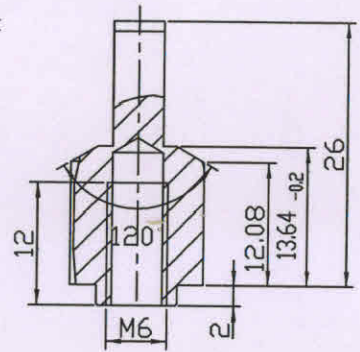


Senkungen DIN 74 Bf6

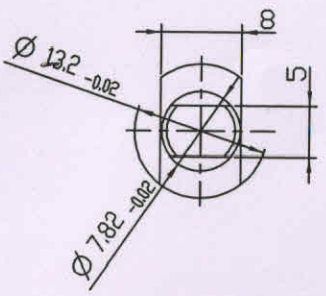
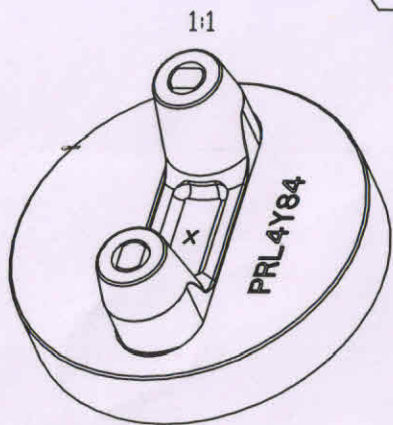


2:1

C-C

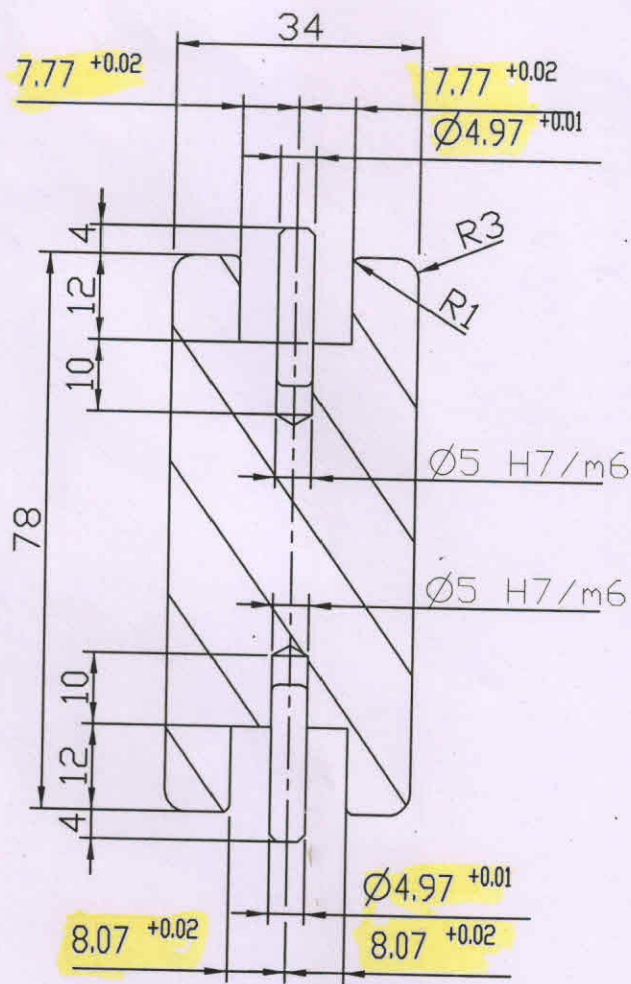


Kennzeichen und Seriennummer anbringen

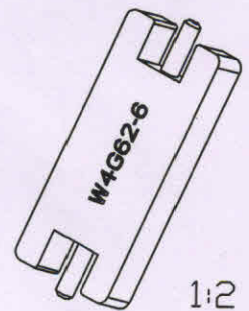


Teile gehärtet

4	zu PRL4Y84	Stift	2	ST	1.2842
3	zu PRL4Y84	Grundplatte	1	ST	1.2842
2	501S41=M6X20	Senkschraube (Innensechsk.)	2	ST	
1	4Y84=D	Gussrohling für Prothesenbauteil 4G53	1	ST	-
Pos.	Material	Materialkurztext	Menge	ME	Verkstoff
Änderungen:		Schutzvermerk nach DIN ISO 16016 beachten! Kanten DIN ISO 13715			
01	Hilfszettel	Zeichnung	Rogge		Allgemeintoleranz DIN ISO 2768-mK
					Oberfläche DIN EN ISO 1302
		verantwortl.	03.12.12	Görke	
		Konstrukt.	03.12.12	Görke	
		PV	03.12.12	Hose	
		Geprüft PV	20130128	Hose(1)	OTTO Bock HealthCare GmbH Duderstadt
		Maßstab:	PRL4Y84		Blatt: 1/1
		1:1	Stecklehre		Geometriedarstellung



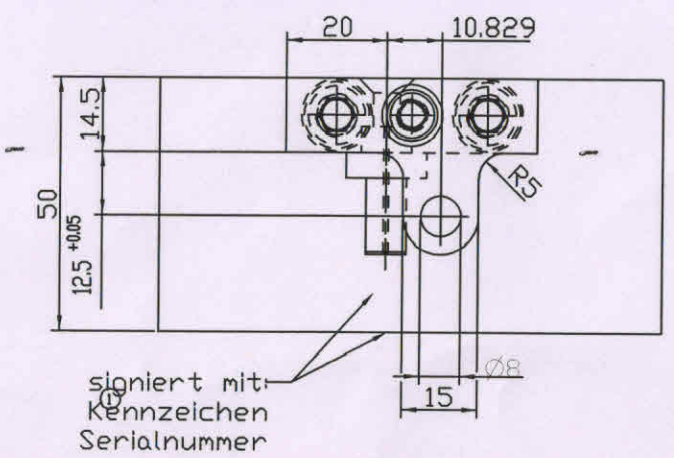
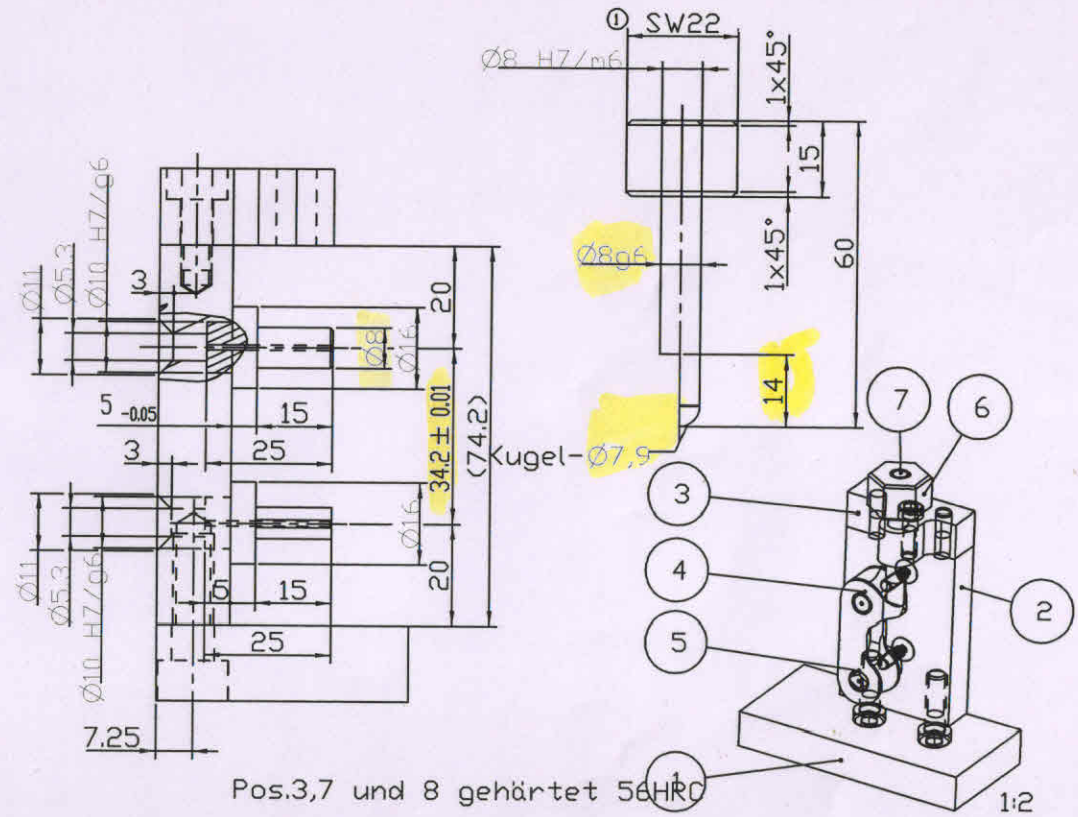
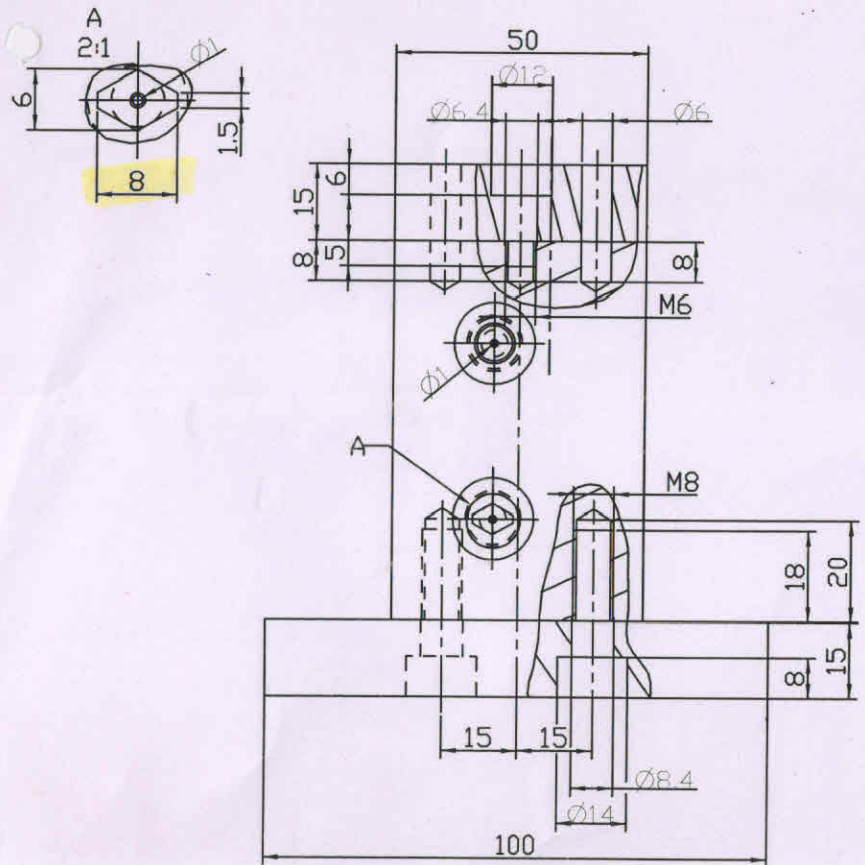
signiert mit:
① Kennzeichen
Serialnummer



2	zu W4G62-6	Aufnahme	1	ST	1.2842
1	506A8=5x22	Zylinderstift	2	ST	
Pos.	Material	Materialkurztext	Menge	ME	Werkstoff
Änderungen:		Schutzvermerk nach DIN ISO 16016 beachten! Ersatz für alte Zeichnung vom 29.			
○	Hinweis	Datum	Name		
01		20090723	Rogge	Allgemeintoleranz DIN ISO 2768 mK Oberfläche DIN ISO 1302 Reihe 3	
		verantwortl. TZ	20090723	Rogge	
		Konstrukt.	1988032	Goebel	
		PV	20090723	M. Eckermann	
		Geprüft PV	20090723	M. Eckermann	
		Maßstab:	1:1		W4G62-6 Lehre
			Blatt:	1/1	
			Geometriedarstellung		
			Nennmass		

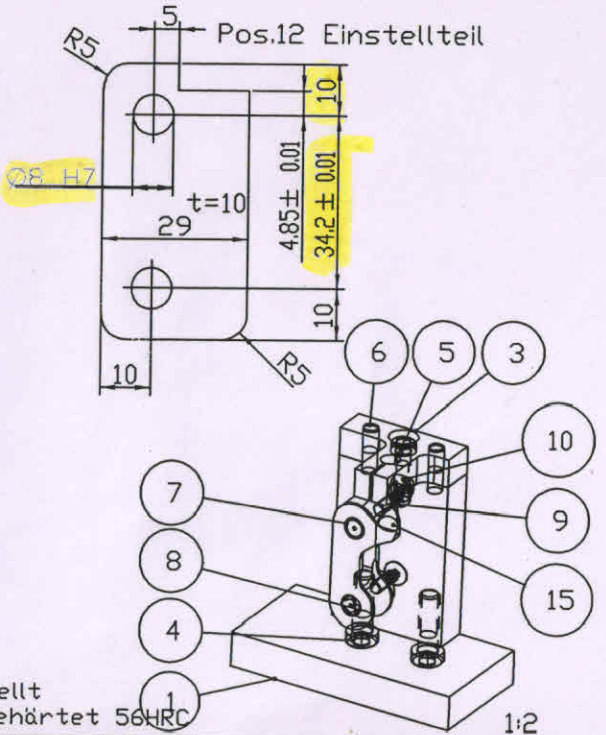
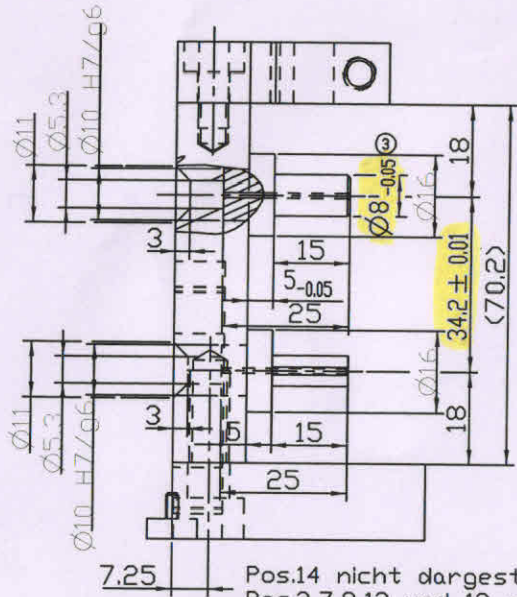
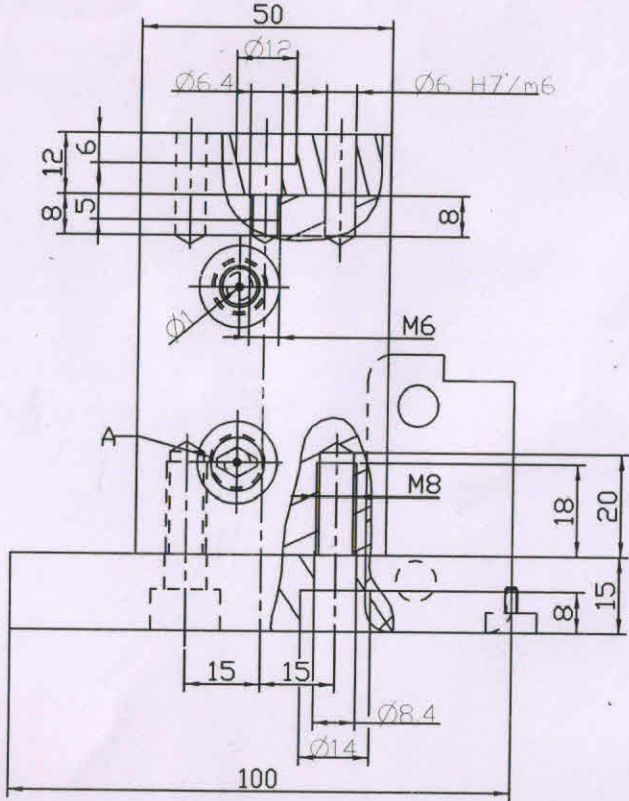
HealthCare GmbH
Duderstadt

13

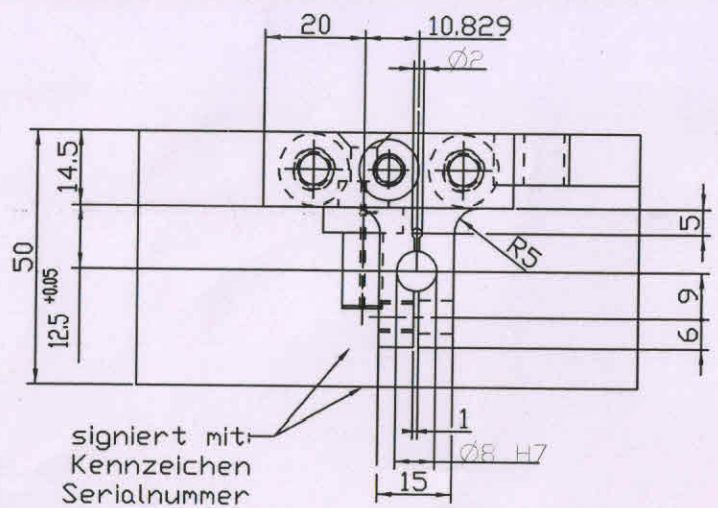


Pos.	Material	Materialkurztext	Menge	NE	Verkstoff
8	4G114=N	Führungshebel	-	ST	
7	zu W4G114-12	Zylinderstift, DIN 6325	1	ST	
6	zu W4G114-12	Griff	1	ST	ALU-Sechskant
5	zu W4G114-12	Aufnahmebolzen_unten	1	ST	1.2842
4	zu W4G114-12	Aufnahmebolzen_oben	1	ST	1.2842
3	zu W4G114-12	Aufnahme	1	ST	1.2842
2	zu W4G114-12	Distanzplatte	1	ST	ST37-2
1	zu W4G114-12	Grundplatte	1	ST	ST37-2
Anderungen:					
01	Änderung	Änderung	Schutzvermerk nach DIN ISO 16016 beachten! Ersatz für alte Zeichnung vom 09.06.2009		
Allgemeintoleranz		DIN ISO 2768 mK		Oberfläche	
verantwortl. TZ		20090730 Rogge			
Konstrukt.		19930609 Goebel			
PV		20090730 M. Eckermann			
Geprüft PV		20090730 M. Eckermann			
Maßstab:		W4G114-12		HealthCare GmbH	
1:1		Lehre		Duderstadt	
				Blatt: 1/1	
				Geometriedarstellung	
				Nennmass	

12

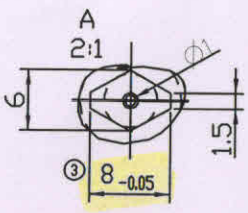
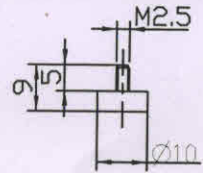


Pos.14 nicht dargestellt
Pos.3,7,8,12 und 13 gehärtet 56HRC



signiert mit:
Kennzeichen
Serialnummer

Pos.13 Messeinsatz



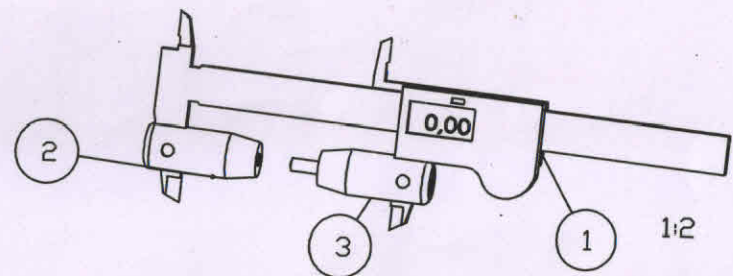
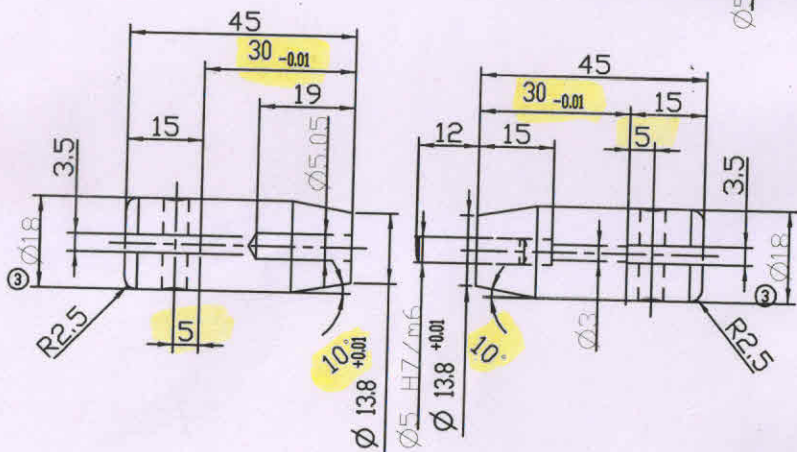
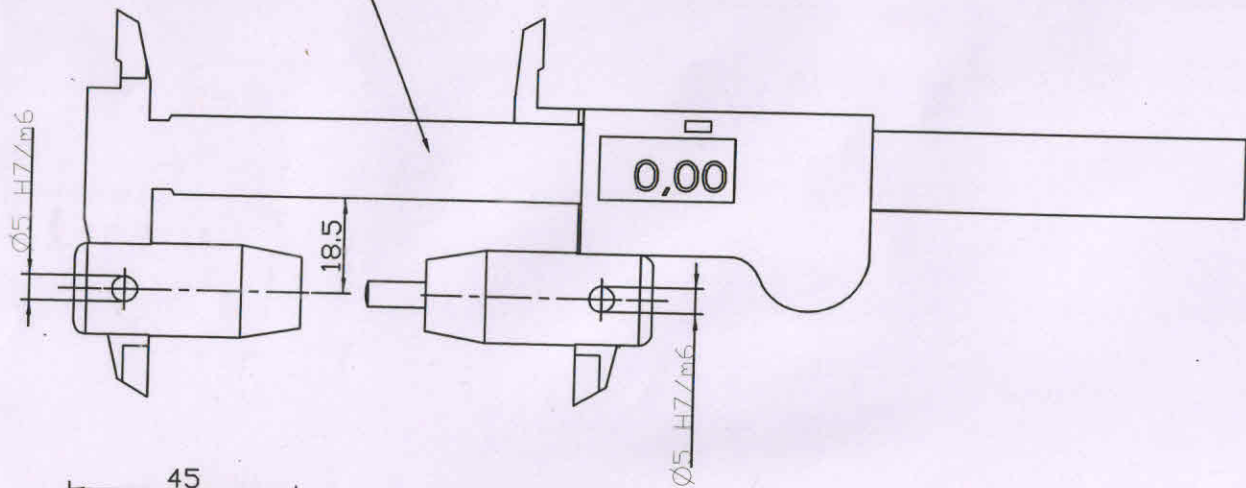
15	509Y1=8.0	Lagerkugel,Niro	1	ST	-
14	zu W4G114-13	Messuhr Fa. Perschmann	1	ST	Bestell-Nr. 432050
13	zu W4G114-13	Messeinsatz	1	ST	1.2842
12	zu W4G114-13	Einstellteil	1	ST	1.2842
11	4G114=N	Führungshebel	1	ST	-
10	501T22=M6X15	Zylinderschraube Innensechskant	1	ST	-
9	501S41=M5X16	Senkschraube (Innensechsk.)	2	ST	-
8	zu W4G114-13	Aufnahmebolzen_unten	1	ST	1.2842
7	zu W4G114-13	Aufnahmebolzen_oben	1	ST	1.2842
6	506A22=6x20		2	ST	-
5	501T45=M6X18	Zylinderschraube DIN 6912	1	ST	-
4	501T45=M8X25	Zylinderschraube DIN 6912	2	ST	-
3	zu W4G114-13	Aufnahme	1	ST	1.2842
2	zu W4G114-13	Distanzplatte	1	ST	ST37-2
1	zu W4G114-13	Grundplatte	1	ST	ST37-2

Pos.	Material	Materialkurztext	Menge	ME	Verkstoff
Änderungen:					
01	Mineris	20090730	Rogge	Schutzvermerk nach DIN ISO 16016 beachten	
02		20100722	Rogge	Kanten DIN ISO 13715	
03		20130130	Rogge	Allgemeintoleranz DIN ISO 2768-mK	
				Oberfläche DIN EN ISO 1302	
				verantwortl. TZ	20090730 Rogge
				Konstrukt.	19930609 Goebel
				PV	20090730 M. Eckermann
				Geprüft PV	20090730 M. Eckermann
				Maßstab:	W4G114-13
				1:1	LEHRE/ Meßvorrichtung für Kugel
					Geometriedarstellung für Kugel
					Nennmass

Blatt: 1/1
Geometriedarstellung für Kugel
Nennmass

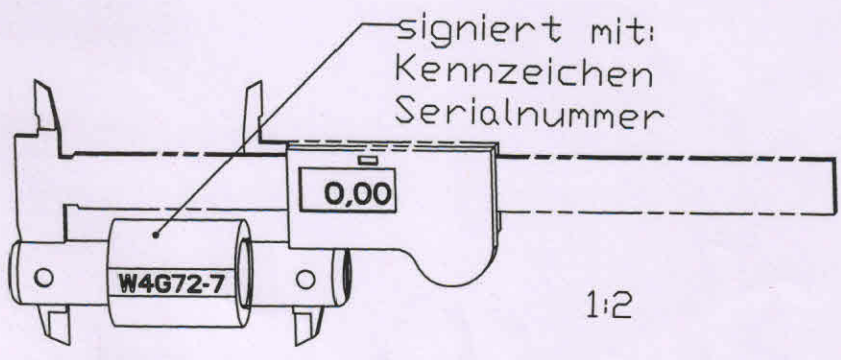
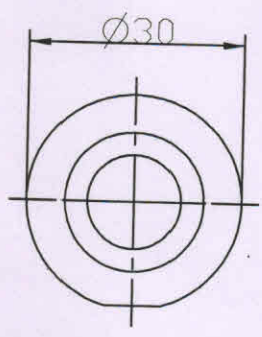
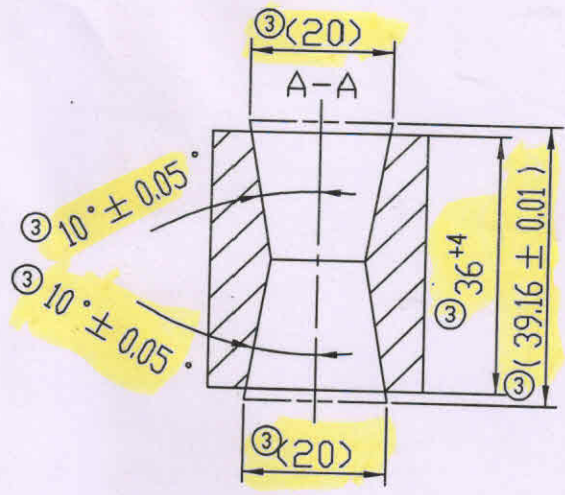
Bock HealthCare GmbH Duderstadt

Rückseite signiert mit
 Kennzeichen
 Seriennummer



3	zu_W4G72-2	Aufnahmebolzen_rechts	1	ST	1.2842	
2	zu_W4G72-2	Aufnahmebolzen_links	1	ST	1.2842	
1	743S6	Meßschieber (Digital)	1	ST		
Pos.	Material	Materialkurztext	Menge	ME	Verkstoff	
Änderungen:		Schutzvermerk nach DIN ISO 16016 beachten				
03	Hilfsnr.	Datum	Abw.	Ersatz für alte Zeichnung vom 23.11.1		
		20091012	Rogge	Oberfläche DIN ISO 1302 Reihe 3		
	verantw. TZ	20091012	Rogge	HealthCare GmbH Duderstadt		
	Konstrukt.	19811123	Goebel			
	PV	20091012	Eckermann			
	Geprüft PV	20091012	Eckermann			
	Maßstab:	W4G72-2			Blatt:	1/1
	1:1	Meßschieber mit Konus			Geometriedarstellung Nennmass	



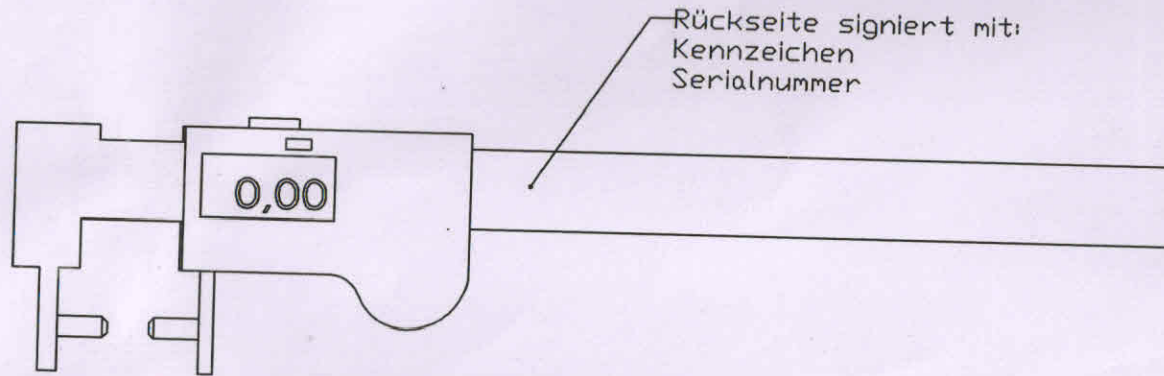


für Maß 64

Pos.	Material	Materialkurztext	Menge	ME	Werkstoff
					1.2842
Änderungen:		Schutzvermerk nach DIN ISO 16016 beachten! Kanten DIN ISO 13715			
01	Aktiv	20130430	Rogge	Allgemeintoleranz DIN ISO 2768-mK	
02	Serialnr.	20130612	Rogge	Oberfläche DIN EN ISO 1302	
03	Maße	20130318	Rogge	verantwortl. TZ 20130228 Rogge	
				Konstrukt. 20130228 Rogge	
				PV 20130228 Hüniger	
				Geprüft PV 20130430 Hüniger	
				Geprüft PV 20130430 Hüniger	
				Maßstab: 1:1	
				zu W4G72-7 Einstellhilfe	
				Blatt: 1/1	
				Geometriedarstellung	
				Nennmaß	

© Bock HealthCare GmbH Duderstadt

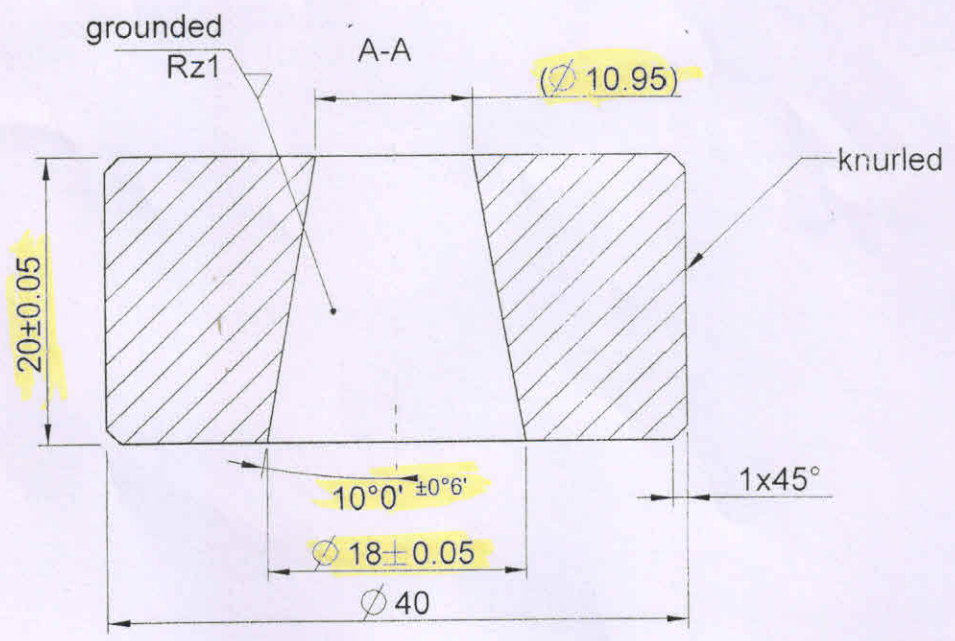
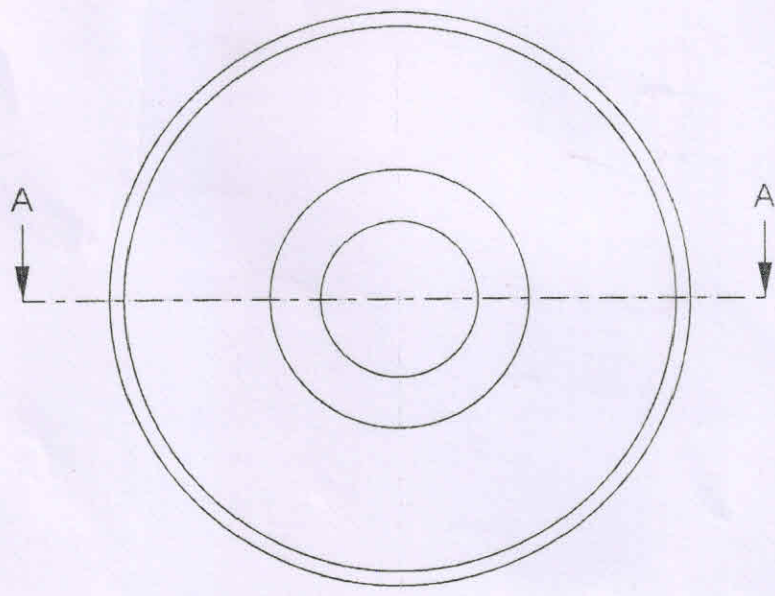
9



Rückseite signiert mit:
Kennzeichen
Seriennummer

2	743S6	Meßschieber (Digital)	1	ST	-
1	-	-	2	ST	-
Pos.	Material	Materialkurztext	Menge	ME	Verkstoff
Änderungen:		Schutzvermerk nach DIN ISO 16016 beachten	Kanten DIN ISO 13715		
Q	Änderung	Datum	Allgemeintoleranz DIN ISO 2768-mK		
			Oberfläche DIN EN ISO 1302		
			verantw. TZ	20121005	Rogge
			Konstrukt.	20121005	Rogge
			PV	20121005	Hünger
			Geprüft PV	20121005	Hünger
			Otto Bock HealthCare GmbH Duderstadt		
			Maßstab:	W30U42-1	Blatt: 1/1
			1:1	Messschieber 2 Spitzen	Geometriedarstellung
					Nennmass

8

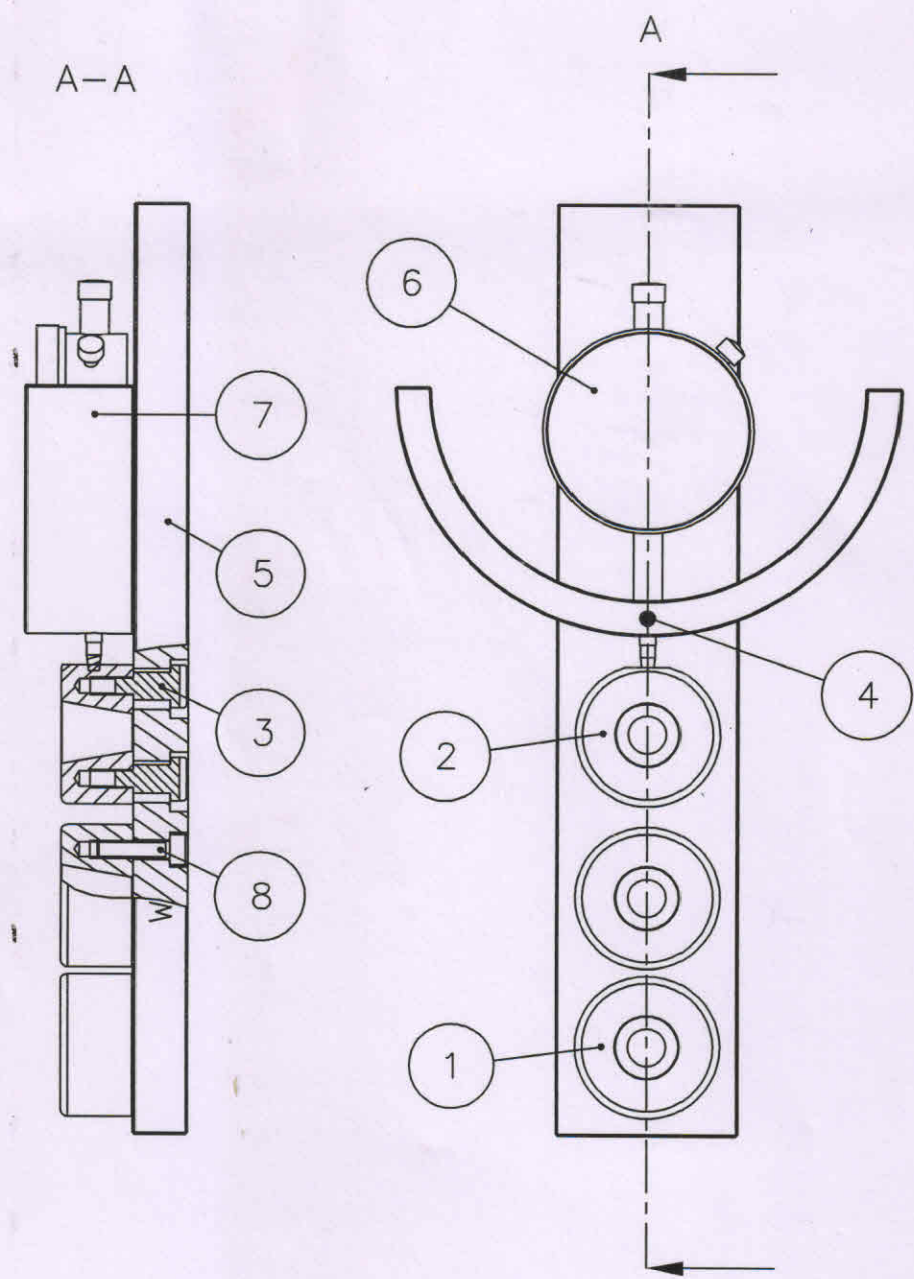


hardened HRC 58 +/-2

-		-		0.001	ST	1.2842
Pos.	Materialnummer/ Materialnumber	Materialkurztext/ Materialdescription		Menge/ qty	ME/ Unit	Werkstoff/ Material spec.
Schutzvermerk/Copyright DIN ISO 16016		Allgemeintoleranz/General tolerance DIN ISO 2768-mK		Oberflächenbeschaffenheit/Surface texture DIN EN ISO 1302		Werkstückkanten/Edges DIN ISO 13715
Gezeichnet/Drawn by -		Konstrukteur/Constr. eng. -		PV/Product Resp Hose		Maßstab/Scale 2:1
-		Materialnummer/Materialnumber 744D3		Dokumentart/Document type Einzelteilzeichnung/ detail drawing		Format/Format A4
-		Materialbezeichnung/Materialdescription Kegelhülse taper sleeve		Änd./Rev.	Datum/Date	Blatt/Sheet 1/1

Filename: 744D3

7



Kennzeichen + Seriennummer anbringen A

8	zu W3R20-6	Zylinderkopfschraube M5x20 DIN912/ISO4762	6	ST	-
7	zu W3R20-6	Schutzring	1	ST	1.1730
6	zu W3R20-6	Messuhr Mahr	1	ST	Perschmann / 434120
5	zu W3R20-6	Grundplatte	1	ST	1.1730
4	zu W3R20-6	Gewindestift ISO 4026 - M4x8	1	ST	-
3	zu W3R20-6	Bundschraube	2	ST	1.2842
2	zu W3R20-6	Aufnahme flach	1	ST	1.2842
1	zu W3R20-6	Aufnahme	2	ST	1.2842
Pos.	Materialnummer/Materialnumber	Materialkurztext/Materialdescription	Menge/qty	ME/Unit	Werkstoff/Material spec.

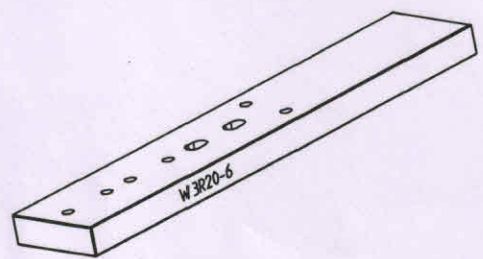
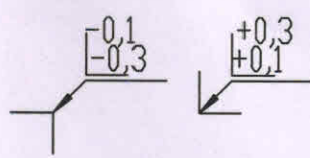
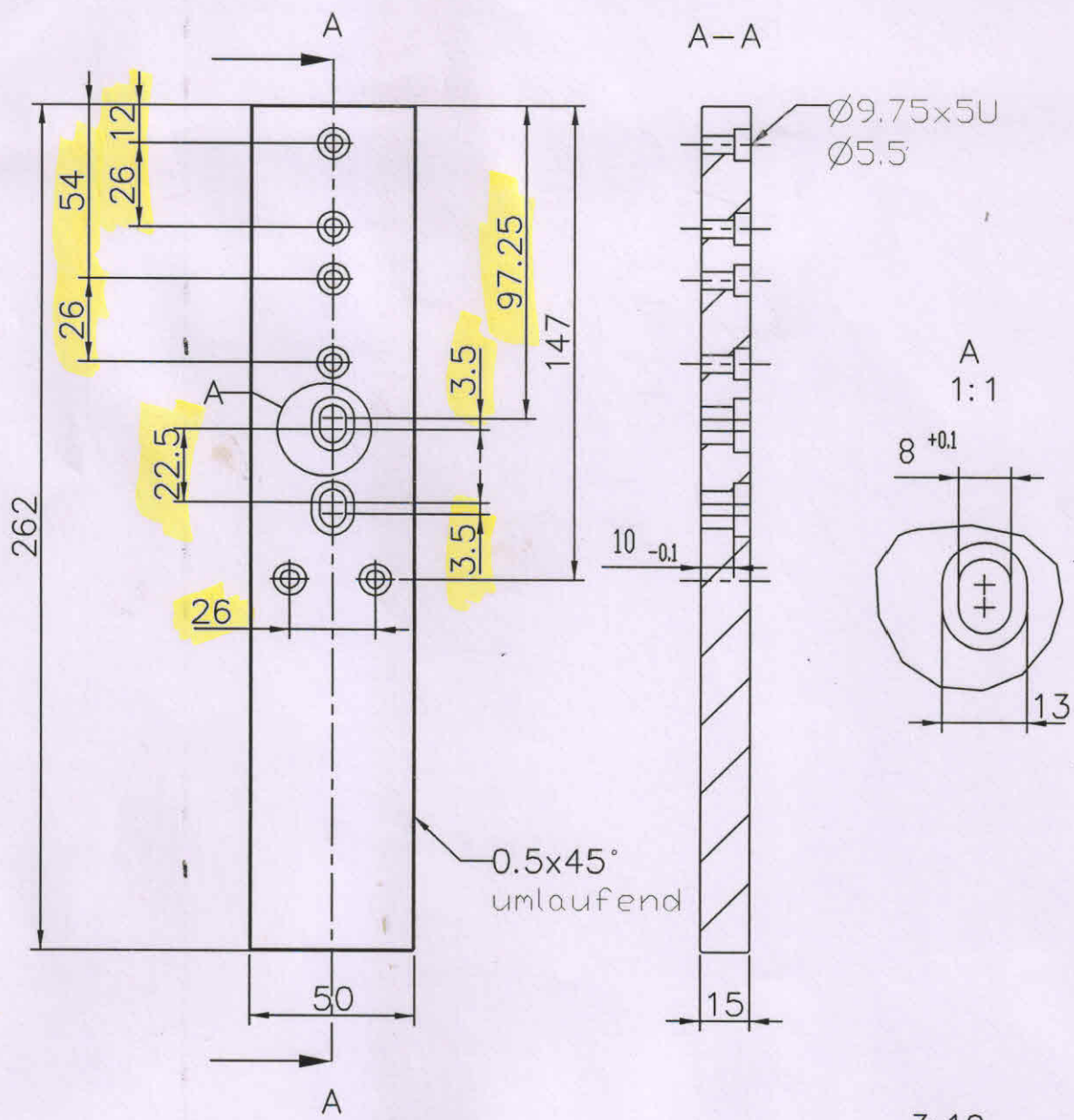
Schutzvermerk/Copyright: DIN ISO 16016
 Toleranz/General tolerance: DIN ISO 2768-mK
 Oberflächenbeschaffenheit/Surface texture: DIN EN ISO 1302
 Werkstückkanten/Edges: DIN ISO 13715

Gezeichnet/Drawn by: Leuthaeusser_M
 Konstrukteur/Constr. eng.: Leuthaeusser_M
 PV/Product Resp.: Eckermann_M
 Maßstab/Scale: 1:2
 Format/Format: A4

Materialnummer/Materialnumber: W3R20-6
 Dokumentart/Document type: Baugruppenzeichnung/assembly drawing
 Materialbezeichnung/Materialdescription: Konus-Meßvorrichtung
 Änd./Rev.: 2
 Datum/Date: 20160128
 Blatt/Sheet: 1/5

Otto Bock HealthCare GmbH Duderstadt

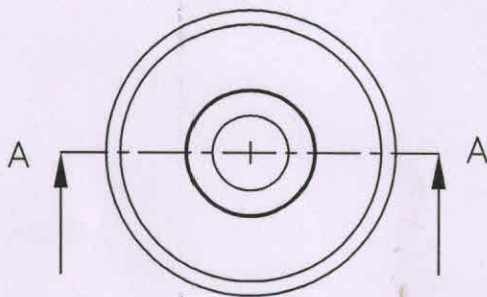
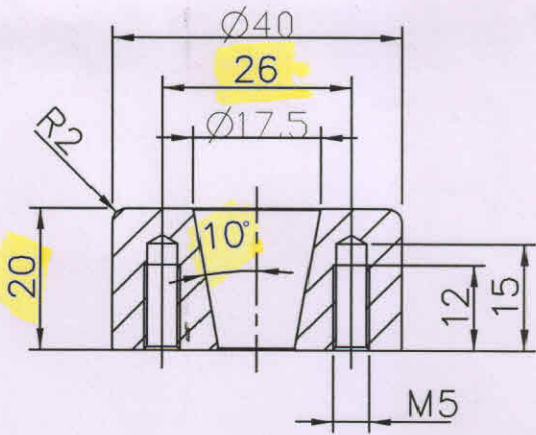
6



Pos.		Materialnummer/Materialnumber		Materialkurztext/Materialdescription		Menge/qty		ME/Unit		1.1730			
Schutzvermerk/Copyright		Toleranz/General tolerance		Oberflächenbeschaffenheit/Surface texture		Werkstückkanten/Edges							
DIN ISO 16016		DIN ISO 2768-mK		DIN EN ISO 1302		DIN ISO 13715							
Gezeichnet/Drawn by			Konstrukteur/Constr. eng.		PV/Product Resp.		Maßstab/Scale		Format/Format				
Leuthaeusser_M			Leuthaeusser_M		Eckermann_M		1:2		A4				
				Materialnummer/Materialnumber				Dokumentart/Document type					
				zu W3R20-6				Einzelteilzeichnung/ detail drawing					
				Materialbezeichnung/Materialdescription				Änd./Rev.		Datum/Date		Blatt/Sheet	
Otto Bock HealthCare GmbH Duderstadt				Grundplatte				2		20160128		2/5	

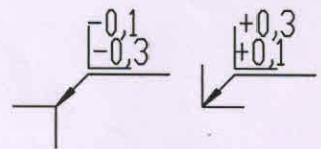
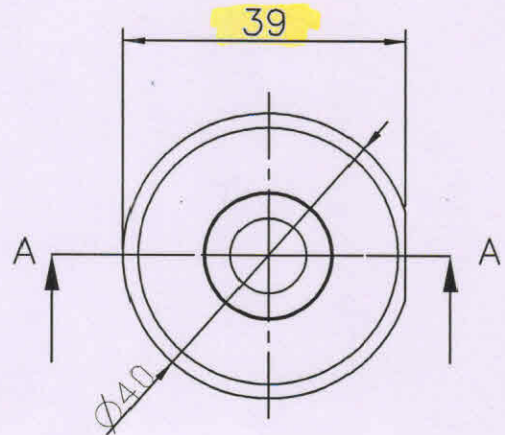
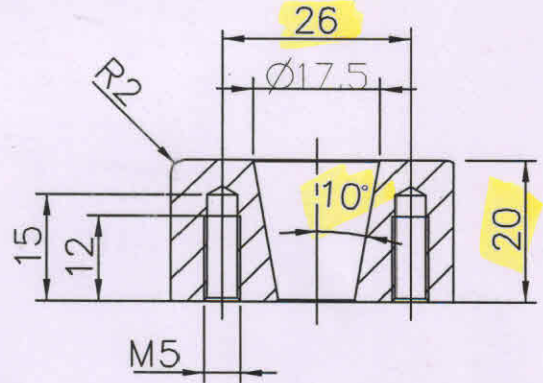
Aufnahme

A-A

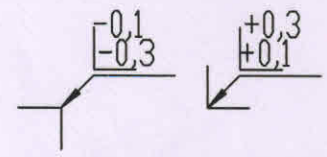
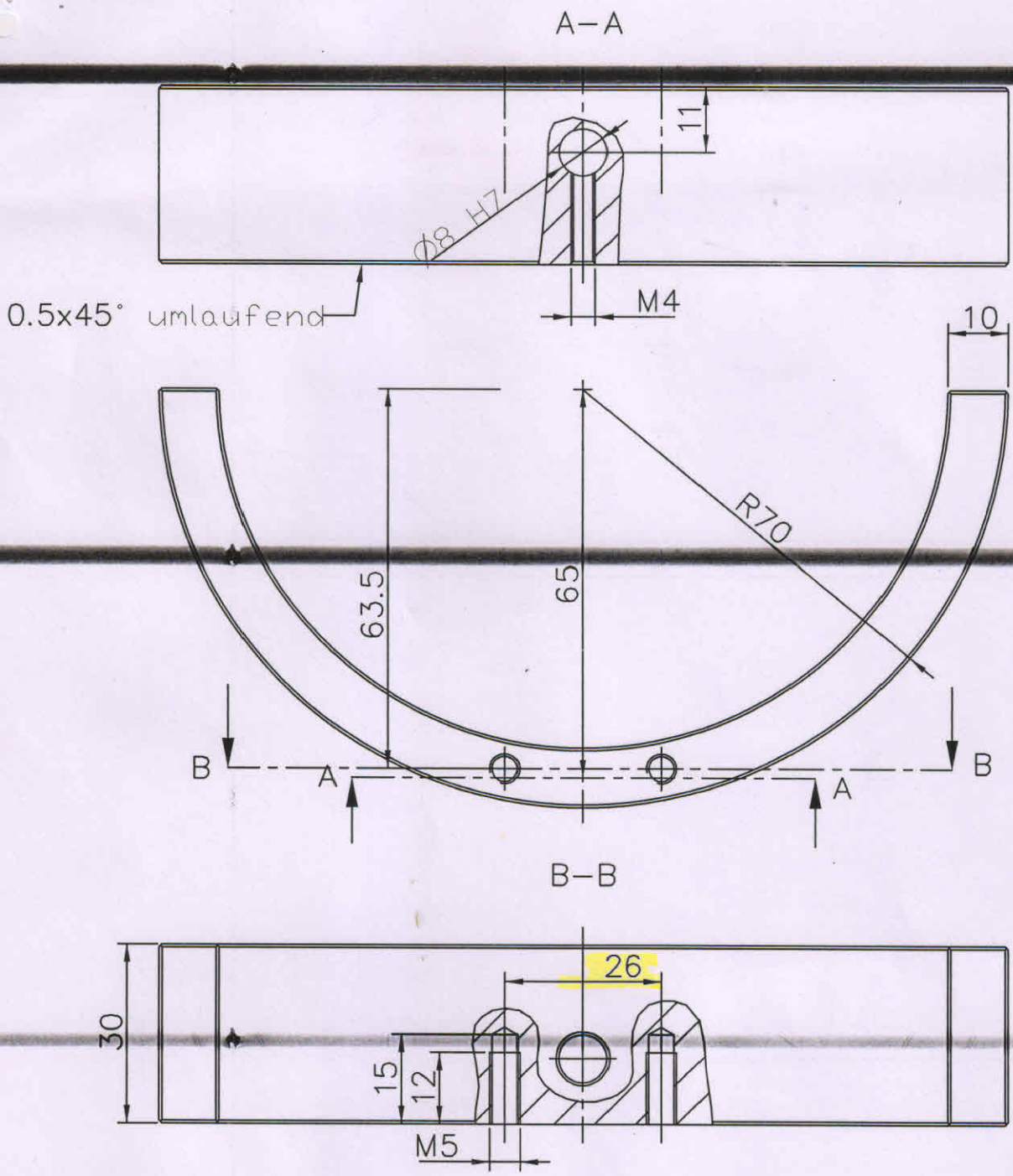


Aufnahme flach

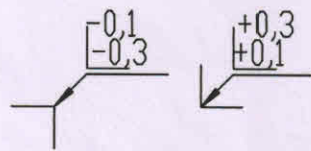
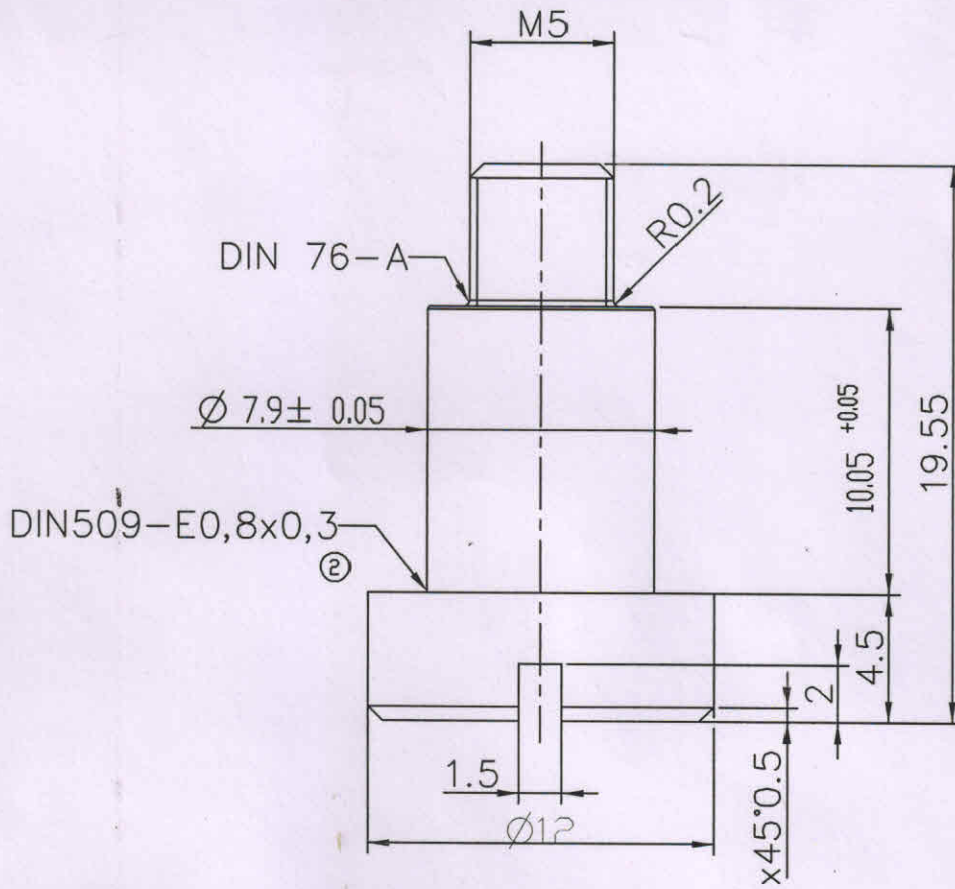
A-A



Pos.	Materialnummer/Materialnumber	Materialkurztext/Materialdescription	Menge/qty	ME/Unit	1.2842	Werkstoff/Material spec.
Schutzvermerk/Copyright DIN ISO 16016		Gemeintoleranz/General tolerance DIN ISO 2768-mK	Oberflächenbeschaffenheit/Surface texture DIN EN ISO 1302		Werkstückkanten/Edges DIN ISO 13715	
Gezeichnet/Drawn by Leuthaeusser_M		Konstrukteur/Constr. eng. Leuthaeusser_M	PV/Product Resp. Eckermann_M		Maßstab/Scale 1:1	Format/Format A4
		Materialnummer/Materialnumber zu W3R20-6			Dokumentart/Document type Einzelteilzeichnung/ detail drawing	
		Materialbezeichnung/Materialdescription Aufnahme			Änd./Rev. Datum/Date 2	Blatt/Sheet 20160128 3/5



					1.1730
Pos.	Materialnummer/Materialnumber	Materialkurztext/Materialdescription	Menge/qty	ME/Unit	Werkstoff/Material spec.
Schutzvermerk/Copyright DIN ISO 16016		Allgemeintoleranz/General tolerance DIN ISO 2768-mK		Oberflächenbeschaffenheit/Surface texture DIN EN ISO 1302	
Gezeichnet/Drawn by Leuthaeusser_M		Konstrukteur/Constr. eng. Leuthaeusser_M	PV/Product Resp. Eckermann_M		Maßstab/Scale 1:1
		Materialnummer/Materialnumber zu W3R20-6		Format/Format A4	
		Materialbezeichnung/Materialdescription Schutzring		Dokumentart/Document type Einzelteilzeichnung/ detail drawing	
Otto Bock HealthCare GmbH Duderstadt				Änd./Rev. Datum/Date 2 20160128	Blatt/Sheet 4/5



				1.2842	
Pos.	Materialnummer/Materialnumber	Materialkurztext/Materialdescription	Menge/qty	ME/Unit	Werkstoff/Material spec.
Schutzvermerk/Copyright DIN ISO 16016		Allgemeintoleranz/General tolerance DIN ISO 2768-mK		Oberflächenbeschaffenheit/Surface texture DIN EN ISO 1302	
Gezeichnet/Drawn by Leuthaeusser_M		Konstrukteur/Constr. eng. Leuthaeusser_M	PV/Product Resp. Eckermann_M		Maßstab/Scale 4:1
		Materialnummer/Materialnumber zu W3R20-6		Dokumentart/Document type Einzelteilzeichnung/ detail drawing	
		Materialbezeichnung/Materialdescription Bundschraube		Änd./Rev.	Datum/Date Blatt/Sheet
Otto Bock HealthCare GmbH Duderstadt				2	20160128 5/5

(On Letter Head of the Tenderer)

ANNEXURE "B"

UNDERTAKING

We hereby undertake that the scope of work is covered for the equipment as listed in ANNEXURE "A" for calibration & Certification of measuring instruments and various equipment to provide NABL Traceable Test Certificate with NABL Logo at the time of Invoices/Bills.

Dated:

Authorised Signatory:

Name :-

Designation :-

Seal :-