

“PARALLEL BAR, RAMP & STAIRS ARRANGEMENT”
(On Turnkey Basis)

Code No. _____

Qty. – As mention

PARALLEL BAR ARRANGEMENT (QTY. – 3 SETS)		
Purpose: Parallel bars are medical devices specifically used in physical and occupational rehabilitation therapy to assist individuals to re-learn to walk and for gait training, as well as to regain balance, strength, range of motion, and mobility.		
Sl. No.	DESCRIPTION OF REQUIREMENT	REQUIRED
A	Scope of work:	
i	Complete design of Parallel bars: The basic data provided in the specification. Vendor to design the Ramp & Stairs as per given shape & size, load data and selection of material.	Confirm
ii	Manufacturing of similar systems components	Confirm
iii	Delivery: ALIMCO Kanpur site	Confirm
iv	Supply of system; as per given details	Confirm
v	Site installation and commissioning along with necessary foundations	Confirm
B	Parallel Bar (Drawings attached)	1 Set
1	No. of Horizontal handrail	2 nos.
1.1	Length of horizontal handrail	4500 mm
1.2	Diameter of horizontal handrail	40 mm
1.3	Material of handrail	SS 316
1.4	Gap between horizontal handrail	600-650 mm
1.5	Adjustable height of handrail	Range 600-1000 mm
1.6	Height adjustment should be done smoothly by means of safety pins or any better arrangement.	Confirm
2	No. of vertical fixed tube from base platform	4 nos.
2.1	Length of each vertical fixed tube	Min. 500 - 600 mm
2.2	Diameter of vertical tube	50 mm
2.3	Material of vertical tube	SS 316
2.4	Gap between two vertical bar on each side (as per attached drawing)	Max. 2100 mm
2.5	Fixed vertical tube should be grouted with floor.	Confirm
2.6	Adjustable vertical tube should be connected with vertical fixed tube & horizontal handrail	Confirm
2.7	The connecting pin of connector for adjustable vertical tube & horizontal handrail should be below the horizontal handrail.	Confirm
3	Platform	
3.1	Length of platform	Min. 5000 mm
3.1	Width of platform	700 - 800 mm
3.2	Top height of platform	Min. 57 mm
3.3	Platform base plate & side cover sheet	Min. 5 mm thick
3.4	Platform base metal sheet should be covered with no slip mat	Min. 2 mm
3.5	Platform base metal sheet should be supported by rectangular stainless steel tube (as per attached drawing)	Confirm
3.6	Rectangular tube support material	SS 316
3.7	Rectangular tube support	Min. 08 nos.

3.8	Size of rectangular tube support	Min. 50mm x 25mm
3.9	Wall thickness of rectangular tube support	Min. 1.5 mm
4	Load carrying capacity of Platform	Min. 200 Kgs/Square foot
C	General conditions for structures.	
1	Design to smooth finish of welding on structures.	Confirm
2	Vendor has to ensure sufficient bracing/supports. Load testing may be performed at site, In case the structure found weak ALIMCO may ask free of cost for replacement/ repair.	Confirm
3	Cutting of material should be Laser cut or Water Jet Cut	Confirm
4	All working edges should be sharp.	Confirm
5	The complete structure should be pickled & polished	Confirm
6	Walking area should have resistant & strengthening to ensure deformation due to walking.	Confirm
7	Platform should have sufficient support to ensure metal plate bending while walking.	Confirm
D	Installation & Commissioning:	
1	Vendor to submit the sketch, design & calculation of structure.	Confirm
2	The complete installation and commissioning must be carried out by the supplier at the project site. Certificate of acceptance is to be signed by customer and supplier.	Confirm
3	Any civil work related to installation to be done by vendor (if any)	Confirm
4	Loading and unloading of material at site is in vendor's scope.	Confirm
5	Handling facility at site during erection site is in vendor's scope.	Confirm
6	Warranty of wear, tear and finishing	24 Months
RAMP & STAIRS ARRANGEMENT (QTY. – 2 SETS)		
Purpose: Ramp & Stairs are medical devices specifically used in physical and occupational rehabilitation therapy to assist individuals to re-learn to walk and for gait training, as well as to regain balance, strength, range of motion, and mobility.		
Sl. No.	DESCRIPTION OF REQUIREMENT	REQUIRED
A	Scope of work:	
i	Complete design of Ramp & Stairs: The basic data provided in the specification. Vendor to design the Ramp & Stairs as per given shape & size, load data and selection of material.	Confirm
ii	The systems should be built in two sections at right angles to fit into a corner. One section has stairs of 6 steps leading to a platform and other section has a ramp. Both the section should be assembled at ALIMCO Kanpur site.	Confirm
iii	Supply of system; as per given details	Confirm
iv	Delivery: ALIMCO Kanpur site	Confirm
v	Site installation and commissioning along with necessary foundations	Confirm
vi	Material of construction: SS 316.	Confirm
B	Ramp & Stairs (Drawings attached)	
1	Ramp	
1.1	Width of ramp	Min. 760 mm

1.2	Angle of inclination of ramp	9°-12°
1.3	Rise of ramp	Floor to 660±10% mm
1.4	Load carrying capacity of ramp	Min. 200 kgs/square foot
1.5	Vertical Supports for ramp	Min. 15 nos.
1.5.1	Size of support	Min. 30 mm Sq. Tube
1.6	Horizontal support for ramp	Min. 06 nos.
1.6.1	Length of each horizontal tube	Min. 700 mm
1.6.2	Size of support	Min. 30 mm Sq. Tube
1.6.3	Gap between two horizontal support	580±20 mm
1.7	Inclined support for ramp	2 Nos.
1.7.1	Size of inclined support along with inclined sheet	Min. 30 mm Sq. Tube
2	Stairs & Platform	
2.1	Total Length/Run of stairs	Min. 1150 mm
2.2	Width of stairs	Min. 760 mm
2.3	Steps in stairs	6 Nos.
2.4	Rise of steps should be 70mm, 75mm, 80mm, 140mm, 145mm & 150mm in 1 st , 2 nd , 3 rd , 4 th , 5 th & 6 th step respectively.	Confirm
2.5	The last step should be leading to platform	Confirm
2.6	Depth of each step (as per attached drawing)	Min. 230 mm
2.7	Top sheet of each stair should be supported horizontally & vertically with square stainless steel tube as per attached drawings.	Confirm
2.7.1	Size of support	Min. 30 mm Sq. Tube
2.8	Platform should be made of stainless steel sheet	Confirm
2.8.1	Height of platform	660±10%mm
2.8.2	Platform should be supported horizontally & vertically with square stainless steel tube	Confirm
2.8.2.1	Size of support	Min. 30 mm Sq. Tube
2.8.3	Vertical support should be at all the corners, middle of the platform & middle of all sides of platform. (as per attached drawing)	Confirm
2.8.4	Horizontal support should be at all the sides of platform	Confirm
3	Hand Rail	
3.1	Hand rail should be all around of the ramp, stairs and platform at two different heights to accommodate adults & children. (as per attached drawing)	Confirm
3.2	Height of handrail for adults measured vertically above the pitch line of a flight on a stairs, ramp and on a landing/platform	850 -1000 mm
3.2.1	Diameter of handrail tube for adult	40±10% mm
3.3	Height of handrail for children measured vertically above the pitch line of a flight on a stairs, ramp and on a landing/platform	600-700 mm
3.3.1	Diameter of handrail tube for children	30±10% mm
3.4	Hand Rails should be supported with rectangular stainless steel tube at all around of ramp, stairs & platform (as per attached drawing).	Confirm
3.4.1	Size of rectangular tube support	Min. 50mm x 25mm
4	Ramp, Stairs & platform should be covered with rectangular stainless steel sheet from all the sides. (as per attached drawing)	Confirm
4.1	Thickness of side cover sheet	Min. 3 mm
4.2	Thickness of top sheet of ramp & stairs.	Min. 5 mm

5	Ramp, steps & platform should be covered with non-slip matting from top	Confirm
5.1	Thickness of non-slip matting	Min. 2 mm
6	Vendor to increase the no. of support to sustain a load of min. 200 kgs/square foot on ramp, stairs & platform if required.	Confirm
7	All the structure should be connected with the base stainless steel plate.	Confirm
7.1	Thickness of base plate	Min. 3 mm
C	General conditions for structures.	
1	Design to smooth finish of welding on structures.	Confirm
2	Vendor has to ensure sufficient bracing/supports. Load testing may be performed at site, In case the structure found weak ALIMCO may ask free of cost for replacement/repair.	Confirm
3	Vendor to submit the sketch, design & calculation of structure.	Confirm
4	Cutting of material should be Laser cut or Water Jet Cut	Confirm
5	All working edges should be sharp.	Confirm
6	The complete structure should be pickled & polished	Confirm
7	Walking area should have resistant & strengthening to ensure deformation due to walking.	Confirm
8	Top metal sheet of Ramp & stairs should have sufficient support to ensure metal plate bending while walking.	Confirm
D	Installation & Commissioning:	
1	Vendor to submit the sketch, design & calculation of structure.	Confirm
2	The complete installation and commissioning must be carried out by the supplier at the project site. Certificate of acceptance is to be signed by customer and supplier.	Confirm
3	Any civil work related to installation to be done by vendor (if any)	Confirm
4	Loading and unloading of material at site is in vendor's scope.	Confirm
5	Handling facility at site during erection site is in vendor's scope.	Confirm
6	Warranty of wear, tear and finishing	24 Months

Delivery period including installation & commissioning:

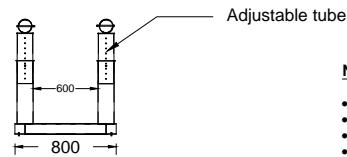
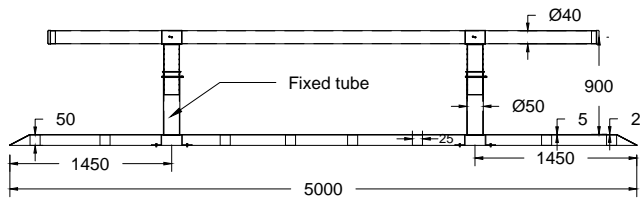
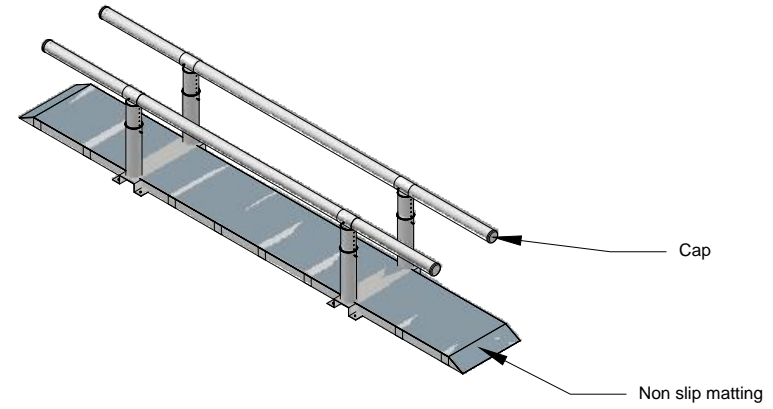
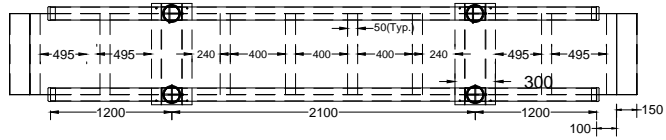
The delivery period including installation & commissioning of Ramp & Stairs arrangement at the destination mentioned in Para 1 on page no. 02 of the tender documents will be 03 months from the date of placement of Purchase Order/work contract.

Warranty:

The entire Ramp & Stairs arrangement/items inclusive of all accessories should be covered under warranty for a period of 24 months from the date of commissioning.

Note:

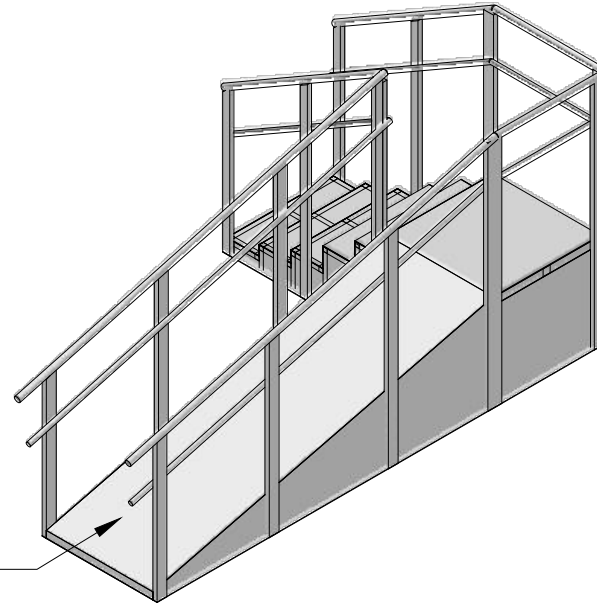
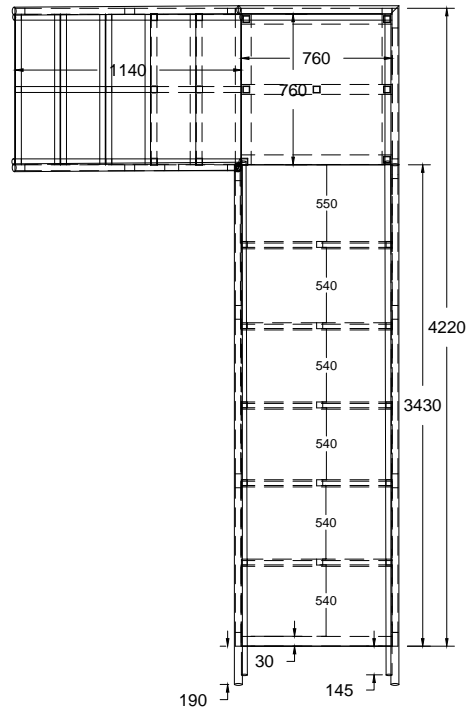
1. Ramp & Stairs arrangement shall be supplied with 3 sets of comprehensive maintenance manual.
2. Vendor to arrange civil foundation work, if required, for installation of system.



NOTES :

- GIVEN DIMENSIONS ARE FINISHED MACHINED DIMENSION.
- RAW MATERIAL TO BE SELECTED ACCORDINGLY.
- DRAWING IS ONLY FOR REFERENCE.
- MATERIAL OF STRUCTURE IS SS-316.
- CUTTING OF MATERIAL SHOULD BE LASER CUT OR WATER JET CUT.

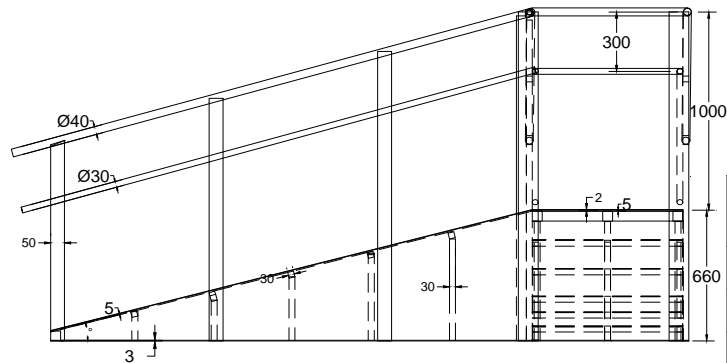
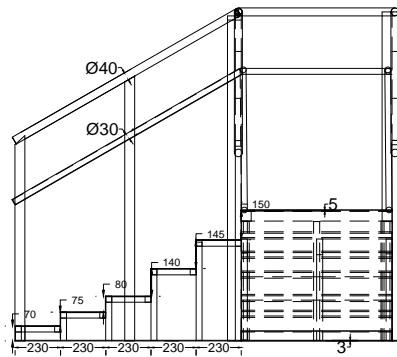
M/S ARTIFICIAL LIMBS MANUFACTURING CORPORATION OF INDIA		
ALL DIMENSION ARE IN MM ONLY UNLESS SPECIFIED		SCALE : NTS
PROJECT NO:	DRAWING NO.	ITEM NO.
ITEM DESCRIPTION : PARALLEL BAR		



Non slip matting cover

NOTES :

- GIVEN DIMENSION ARE FINISHED MACHINED DIMENSION.
- DRAWING IS ONLY FOR REFERENCE.
- MATERIAL FOR PLATE AND PIPE IS SS-316.
- CUTTING OF MATERIAL SHOULD BE LASER CUT OR WATER JET CUT.



ARTIFICIAL LIMBS MANUFACTURING CORPORATION OF INDIA

ALL DIMENSION ARE IN MM. ONLY UNLESS SPECIFIED

SCALE : NTS

PROJECT NO.:

DRAWING NO.:

ITEM NO.:

ITEM DESCRIPTION : RAMP & STAIRS