

Code No. _____

Specifications: Dust Collector for Prosthetic & Orthotic Workshop Use**Qty: 01 Set****(On Turnkey Basis)****Purpose:** This machine is used for extraction of dry wood and plastic dust & chips.

SL. NO.	DESCRIPTION OF REQUIREMENT	REQUIRED
A	Technical specification	
1	Dimensions (WxDxH)	1200 x 850 x 1950 mm (minimum)
2	Nominal volume flow	3000 m ³ /h
3	Sound intensity level	Max. 80 dB(A)
4	Cleaning performance	More than 99 %
5	Chippings collection volume	Min. 95 Litre
6	Residual dust content	10 microns
7	Direct drive air blower	Min. 5 HP
8	Air return via filter system	Confirm
9	Pneumatic cleaning	Confirm
10	There should be supplied a compressor for cleaning dust collector	Confirm
10.1	Capacity of compressor	Min. 5 HP
10.2	Compressor should be along with air dryer.	Confirm
11	Fine particle filter	Confirm
12	Dust collector should be compatible to connect minimum 3 nos. of machines.	Confirm
13	Length of each hose pipe (To connect 3 nos. of machines)	Minimum 3 m each
14	Suction connector should be compatible to connect the diameter range from 100 mm to 120 mm.	Confirm
15	Touch screen controller	Confirm
16	Automatic vibrating/shaking cleaning	Confirm
17	Fine particle filter	Confirm
18	Controller for automatic start-up of processing machines with potential-free contact	Confirm
19	Controller should be touch screen	Confirm
20	Power consumption	Vendor to confirm
21	Weight of machine	Minimum 450 kg
22	Electrical Accessories	
22.1	Electric Supply Phase, Voltage, Frequency	3x 400 V \pm 6% , 50 Hz \pm 3%
22.2	Connecting cable	Minimum 5 m connection cable
23	Warranty	24 months
B	Accessories	
1	Exhaust hose with firmly embedded steel wire spiral	Confirm
1.1	Flame resistant	Confirm
1.2	Material	Polyurethane/G.I.
1.3	Exhaust hose diameter range	100 - 120 mm

2	Wall ducting (as shown in layout)	Confirm
2.1	Pipe material	Galvanized Iron (GI)
2.2	Diameter range	250 - 300 mm
2.3	Vendor has to ensure sufficient support for wall ducting, In case the structure found weak ALIMCO may ask free of cost for replacement/repair.	Confirm
3	All the hose pipe, ducting pipe & hose clips should be compatible to attach.	Confirm
C	Documentation	
1	Installation and Commissioning instruction	Each documents 3 sets of hard copy and 1 set of soft copy along with delivery
2	Operating instruction	
3	Preventive maintenance instructions	
4	Lifting instruction mentioned in packing list	
5	Detailed invoice and packing list of all items, devices and detailed prospect of machine and all other accessories enclosed in respective boxes	
D	Installation and Commissioning	
1	The complete installation and commissioning must be carried out by the supplier at the project (at the final destination/premises). Certificate of acceptance is to be signed by customer and supplier.	Confirm
2	All logistic, Grouting & any other Civil work has to be done by Vendor (If any)	Confirm
3	All electrical Items should be Tropicalized	Confirm
E	Training at installation place	
1	Operator training	1 day
2	Maintenance course mechanical, electrical and electronics (All Inclusive)	1 day

Delivery period including installation & commissioning:

The delivery period including installation & commissioning of machine/equipment at the destination mentioned in Para 1 on page no. 02 of the tender documents will be 3 months from the date of placement of Purchase Order/work contract.

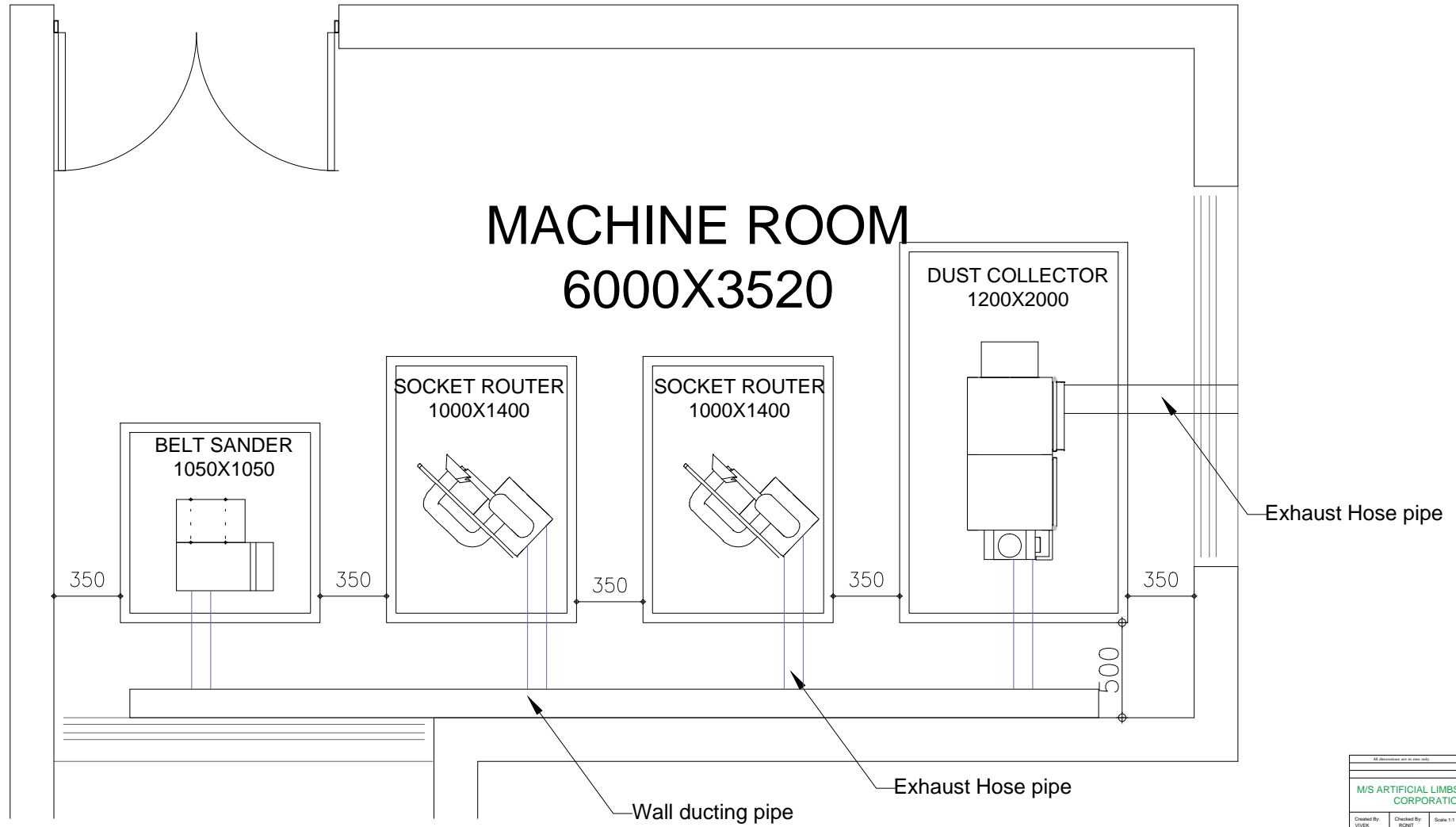
Warranty:

Machine inclusive of all system/accessories should be covered under warranty for a period of 24 months from the date of commissioning.

Note:

1. Machine shall be supplied with 3 sets of comprehensive operation and maintenance manual.
2. Breakdown calls to be attended within 48 hrs.
3. Supply to be done on Turnkey Basis. ALIMCO shall provide electrical supply power source near to the place of installation. Sufficient suitable cable, cable tray and fitting to connect the machine from power source are in vendor's scope.
4. Total power consumption (in KW) to be provided by the tenderer.

MACHINE ROOM 6000X3520



M/S ARTIFICIAL LIMBS MANUFACTURING CORPORATION OF INDIA			
M/S ARTIFICIAL LIMBS MANUFACTURING CORPORATION OF INDIA			
Created By: VIVEK	Checked By: RINET	Scale: 1:1	Date: 12.12.2018
DWG : APOC MACHINE ROOM LAYOUT			
SITE : ALIMCO KANPUR			