



**ALIMCO**

**Artificial Limbs Manufacturing**

**Corporation of India**

(A GOVERNMENT OF INDIA UNDERTAKING)

**G.T. ROAD, KANPUR-U.P.**

**209217**

**TENDER NO. PD/LT/16/AW, DATE- 22.09.2018**

**BID SUBMISSION END DATE- 08.10.2018**

**TENDER DOCUMENTS**

FOR

**“Job Work for Assembly of Wheels for Tricycle (LD28/LJ57 & LD29/LJ58)”**

Dear Sir,

Online tenders are invited for **Job Work for Assembly of Wheels for Tricycle (LD28/LJ57 & LD29/LJ58)** strictly as per ALIMCO Specification, against Job Work Order to be placed on the successful Tenderer within specified period as per Job Work Order. Manual bids shall not be accepted.

Tender documents may be downloaded from ALIMCO website [www.alimco.in](http://www.alimco.in) (for reference only) and CPPP website <https://eprocure.gov.in/eprocure/app>. The tender schedules are mentioned below.

#### CRITICAL DATE SHEET

Published Date	27 September 2018 (16:30 PM)
Bid Document Download Start Date	27 September 2018 (16:35 PM)
Bid Submission Start Date	27 September 2018 (16:40 PM)
Bid Submission End Date	08 October 2018 (14:00 PM)
Bid Opening Date	09 October 2018 (15:30 PM)

Bids shall be submitted online only at CPPP website: <https://eprocure.gov.in/eprocure/app>.

Tenderer/Contractors are advised to follow the instructions provided in the 'Instructions to the Contractors/Tenderer for the e-submission of the bids online through the Central Public Procurement Portal for e Procurement at <https://eprocure.gov.in/eprocure/app>.

#### **INSTRUCTION FOR ONLINE BID SUBMISSION**

The bidders are required to submit soft copies of their bids electronically on the Central Public Procurement (CPP) Portal i.e. <http://eprocure.gov.in/eprocure/app>, using valid Digital Signature Certificates. The instructions given below are meant to assist the bidders in registering on the CPP Portal, prepare their bids in accordance with the requirements and submitting their bids online on the CPP Portal.

#### **REGISTRATION**

- (i) Bidders are required to enroll on the e-Procurement module of the Central Public Procurement Portal by using the "Online Bidder Enrollment" option available on the home page. **Enrolment on the CPP Portal is free of charge.**
- (ii) During enrolment/ registration, the bidders should provide the correct/ true information including valid email-id & mobile no. All the correspondence shall be made directly with the contractors/ bidders through email-id provided.
- (iii) As part of the enrolment process, the bidders will be required to choose a unique username and assign a password for their accounts.
- (iv) For e-tendering possession of valid Digital Signature Certificate (Class II or Class III Certificates with signing key usage) is mandatory which can be obtained from SIFY /nCode/eMudra or any Certifying Authority recognized by CCA India on eToken/ Smartcard.
- (v) Upon enrolment on CPP Portal for e-tendering, the bidders shall register their valid Digital Signature Certificate with their profile.
- (vi) Only one valid DSC should be registered by a bidder. Bidders are responsible to ensure that they do not lend their DSCs to others which may lead to misuse and should ensure safety of the same.
- (vii) Bidders can then log into the site through the secured login by entering their user ID/ password and the password of the DSC/ eToken.

## **SEARCHING FOR TENDER DOCUMENTS**

- (i) There are various search options built in the CPP Portal to facilitate bidders to search active tenders by several parameters. These parameters could include Tender ID, organization name, location, date, value, etc. There is also an option of advanced search for tenders, wherein the bidders may combine a number of search parameters such as organization name, form of contract, location, date, other keywords, etc., to search for a tender published on the CPP Portal.
- (ii) Once the bidders have selected the tenders they are interested in, they may download the required documents / tender schedules. These tenders can be moved to the respective 'My Tenders' folder. This would enable the CPP Portal to intimate the bidders through SMS / e-mail in case there is any corrigendum issued to the tender document.
- (iii) The bidder should make a note of the unique Tender ID assigned to each tender, in case they want to obtain any clarification / help from the Helpdesk.

## **PREPARATION OF BIDS:**

- (i) For preparation of bid Bidders shall search the tender from published tender list available on site and download the complete tender document and should take into account corrigendum if any published before submitting their bids.
- (ii) After selecting the tender document same shall be moved to the 'My favorite' folder of bidders account from where bidder can view all the details of the tender document.
- (iii) Bidder shall go through the tender document carefully to understand the documents required to be submitted as part of the bid. Bidders shall note the number of covers in which the bid documents have to be submitted, the number of documents – including the names and content of each of the document that need to be submitted. Any deviations from these may lead to rejection of the bid.
- (iv) Any pre-bid clarifications if required, then same may be obtained online through the tender site, or through the contact details given in the tender document.
- (v) Bidders should get ready in advance the bid documents in the required format (PDF/xls/rar/dwf/jpg formats) to be submitted as indicated in the tender document/schedule. **Bid documents may be scanned with 100 dpi with black and white option which helps in reducing size of the scanned document.**
- (vi) Bidders can update well in advance, the documents such as experience certificates, annual report, PAN, EPF & other details etc., under "My Space/ Other Important Document" option, which can be submitted as per tender requirements. This will facilitate the bid submission process faster by reducing upload time of bids.

## **SUBMISSION OF BIDS:**

- (i) Bidder should log into the site well in advance for bid submission so that he/ she upload the bid in time i.e. on or before the bid submission time. Bidder will be responsible for any delay due to other issues.
- (ii) Bidder should prepare the Tender Fee and EMD as per the instructions specified in the NIT/ tender document. The details of the DD/BC/BG/ others physically sent, should tally with the details available in the scanned copy and the data entered during bid submission time. Otherwise the uploaded bid will be rejected.
- (iii) While submitting the bids online, the bidder shall read the terms & conditions (of CPP portal) and accepts the same in order to proceed further to submit their bid.
- (iv) Bidders shall select the payment option as offline to pay the Tender Fee/ EMD and enter details of the DD/BC/BG/others.
- (v) Bidder shall digitally sign and upload the required bid documents one by one as indicated in the tender document.
- (vi) Bidders shall note that the very act of using DSC for downloading the tender document and uploading their offers is deemed to be a confirmation that they have read all sections and pages of the tender document without any exception and have understood the complete tender document and are clear about the requirements of the tender document.
- (vii) Bid documents may be scanned with 100 dpi with black and white option which helps in reducing size of the scanned document. For the file size of less than 1 MB, the transaction uploading time will be very fast.
- (viii) **If price quotes are required in XLS format, utmost care shall be taken for uploading Schedule of quantities & Prices and any change/ modification of the price schedule shall render it unfit for bidding.**  
**Bidders shall download the Schedule of Quantities & Prices i.e. Schedule-A, in XLS format and save it without changing the name of the file. Bidder shall quote their rate in figures in the appropriate cells, thereafter save and upload the file in financial bid cover (Price bid) only.**  
**If the template of Schedule of Quantities & Prices file is found to be modified/corrupted in the eventuality by the bidder, the bid will be rejected and further dealt as per provision of clause no 23.0 of ITB including forfeiture of EMD.**  
**The bidders are cautioned that uploading of financial bid elsewhere i.e. other than in cover 2 will result in rejection of the tender.**

- (ix) Bidders shall submit their bids through online e-tendering system to the Tender Inviting Authority (TIA) well before the bid submission end date & time (as per Server System Clock). **The TIA will not be held responsible for any sort of delay or the difficulties faced during the submission of bids online by the bidders at the eleventh hour.**
- (x) After the bid submission (i.e. after Clicking “Freeze Bid Submission” in the portal), the bidders shall **take print out of system generated acknowledgement number**, and keep it as a record of evidence for online submission of bid, which will also act as an entry pass to participate in the bid opening.
- (xi) Bidders should follow the server time being displayed on bidder’s dashboard at the top of the tender site, which shall be considered valid for all actions of requesting, bid submission, bid opening etc., in the e-tender system.
- (xii) All the documents being submitted by the bidders would be encrypted using PKI (Public Key Infrastructure) encryption techniques to ensure the secrecy of the data. The data entered cannot be viewed by unauthorized persons until the time of bid opening. The confidentiality of the bids is maintained using the secured Socket Layer 128-bit encryption technology.

**ASSISTANCE TO BIDDERS:**

1. Any queries relating to the tender document and the terms and conditions contained therein should be addressed to the Tender Inviting Authority for a tender or the relevant contract person indicated in the tender.
2. Any queries relating to the process of online bid submission or queries relating to CPP Portal in general may be directed to the 24x7 CPP Portal Helpdesk.

**Job Work for Assembly of Wheels for Tricycle (LD28/LJ57 & LD29/LJ58)**

**1.0 SCOPE OF WORK**

- 1.1 The work involves as per details given in Table-1 as per respective drawings
- 1.2 Simultaneous, trouble free & timely progress/completion of work needs to be ensured.
- 1.3 Tenderers are requested to visit ALIMCO, Kanpur between 14.00 hrs. to 16.00 hrs. on any working day (Monday to Friday) to assess the nature and volume of job.
- 1.4 Collection of raw material components from our store and supply of finished items to our store have to be done by the tenderers.
- 1.5 Tenderers has to collect input material and supply output material to Corporation at his our cost.
- 1.6 The material would be required to be supplied on staggered delivery schedules to be indicated in Job Work Order or as required by the Corporation.
- 1.7 The tentative quantities likely to be covered by Job Work Order is indicated below in **Table-1**.

**Table-1**

Sl.No.	Code No	Description of work	Unit	Qty.	Delivery Schedule
1	LD28/ LJ57	Front wheel Assy Size 28''x 1½'', 32 Holes. Assembly of Rim, Spoke, Nipple, Washer and Hub and Trueing of wheel (As per drawing)	Nos.	12500	2500 per Month
2	LD29/ LJ58	Rear wheel Assy Size 28''x 1 ½'', 40 Hole. Assembly of Rim, Spoke, Nipple, Washer and Hub and Trueing of wheel (As per drawing)	Nos.	25000	5000 per Month

- 1.8 The basic price/rate, Packing & Forwarding charges and Freight charges must be mentioned separately & specifically. The offer quoted Inclusive of Taxes, Packing & Forwarding Charges and freight charges may not considered for further processing.
- 1.9 Any other delivery Mode i.e. other than "FOR ALIMCO, Kanpur "or "FOR/Ex. Shop/Ex. Godown/Ex. Work, KANPUR shall not be considered and such offer shall be summarily reject.
- 1.10 Kindly mention GSTIN No, HSN + GST% in Quotation.
- 1.11 Maximum period required to commence job work which will normally be not exceeding 10 days from the date of placement of Purchase Order.

- 1.12 This is fixed price tender. Any request for rate revision till currency of P.O shall not be considered.
- 1.13 Jigs, Fixture & Dies for manufacture of the above items required, if any, is to be developed by the party at their own cost.
- 1.14 The total requirement of the job work order may vary substantially up or down as per requirement of the Corporation & successful tenderer will be required to arrange the job work accordingly.
- 1.15 The tentative monthly requirement of quantity is indicated in **Table-1** above subject to be change by the Corporation, which may vary substantially up or down is as per requirement of the Corporation.
- 1.16 In case of split upto 3 parties, 60% of the quantity may be placed on L-1 and 20% each on L-2 & L-3 provided they agree to match the rate with L-1 and in case of split upto 02 parties 60% of the quantity may be placed on L-1 and 40% on L-2 provided L-2 agree to match rates with L-1.
- 1.17 All input material/components/bought out kits wise shall be provided by the Corporation as per details given below in **Table-2** :-

**INPUT / OUTPUT NORMS (TABLE-2)**

Sl.No.	INPUT			OUTPUT	
	Raw Material	Nomenclature	Qty.	Finish Item Code	Qty.
<b>1(a)-</b>	<b>Front Wheel Assembly (LD28)</b>				
(i)	LA 37	Nipple For Bicycle Spokes dia 2mm Brass, As per IS:630	32	<b>LD28 (Front Wheel Assembled)</b>	<b>01</b>
(ii)	LA 38	Bicycle Spoke Washer dia 2mm galvanized As per IS:630	32		
(iii)	LC 51	Standard Bicycle Hub Axle Assy. Front Wheel (28"x1 ½") with 16 Holes in each Flange	01		
(iv)	LC 54	Rim bicycle Type A (28"x1 ½") with 32 Holes for spoke as per IS:624	01		
(v)	LC 55	Spokes Bicycle For (28"x1 ½") wheel, dia2mm, As per IS:630	32		
<b>1(b)-</b>	<b>Front Wheel Assembly (LJ57)</b>				
(i)	LJ 52	Rim bicycle BE-635-2S-Steel (28"x1 ½") with 32 Holes for Spokes, Ni.Cr.Plated, ISI Marked IS:624	01	<b>LJ57 (Front Wheel Assembled)</b>	<b>01</b>
(ii)	LA 37	Nipple for Bicycle Spokes dia 2mm Brass, Ni.cr.plated, As per IS:630	32		
(iii)	LA 38	Bicycle Spoke Washer dia 2mm 0.28mm Thick, Galvanized As per IS:630	32		
(iv)	LC 51	Bicycle Front Hub Assy. (32 Holes) for 28x1 ½" wheel PH Tyre, Ni.Cr.plated, As per IS:12205	01		
(v)	LC 55	Spokes Bicycle For (28"x1 ½") wheel, dia2mm, Zinc Plated Blue Passivation, As per IS:630	32		

<b>2(a)-</b>		<b>Rear Wheel Assembly (LD29)</b>			
(i)	LA 37	Nipple For Bicycle Spokes dia 2mm Brass, Ni.Cr.Plated As per IS:630	40	<b>LD29 (Rear Wheel Assembled)</b>	<b>01</b>
(ii)	LA 38	Bicycle Spoke Washer dia 2mm galvanized As per IS:630	40		
(iii)	LC 55	Spokes bicycle for (28"x1 ½") Wheel dia 2mm As per IS:630	40		
(iv)	LC 56	Standard Bicycle Hub Axle Assy. Rear Wheel 28"x1 ½" with 20 holes in each flange	01		
(v)	LC 68	Rim Bicycle Type 'A' 28"x1 ½" with 40 holes for spokes, As per IS:624	01		
<b>2(b)-</b>		<b>Rear Wheel Assembly (LJ58)</b>			
(i)	LJ 54	Rim Bicycle BE-635-25-Steel (28"x1 ½") with 40 Holes For spokes, ni-cr-plated, ISI Marked, IS:624	01	<b>LJ58 (Rear Wheel Assembled)</b>	<b>01</b>
(ii)	LA 37	Nipple For Bicycle Spokes dia 2mm Brass, Ni.Cr.Plated As per IS:630	40		
(iii)	LA 38	Bicycle Spoke Washer dia 2mm 0.28mm galvanized As per IS:630	40		
(iv)	LC 55	Spokes bicycle for (28"x1 ½") Wheel dia 2mm, Zinc plated Blue Passivation, As per IS:630	40		
(v)	LC 56	Bicycle Rear Hub Assy. (40 Holes) for 28"x1 ½" Wheel, PH Type, Thread Length 10.0mm. Min. Ni.Cr.Plated, As per IS:12205	01		

**Note: -**(i) In case of any such requirement the corporation will be entitled to place repeat order on the same rate, terms & conditions subject to mutual consent.

(ii) The Corporation has right to amend the Tender/Purchase Order quantity (enhanced/reduced) in case of change/amendment in the Production schedule during currency of Purchase Order to meet out the Corporation's target/commitments as per customer's/marketing department requirement.

### **TERMS AND CONDITIONS**

**A-1.** Submission of Tenders– The detailed tender documents may be downloaded from <http://eprocure.gov.in/eprocure/app> till the last date of submission of tender. The Tender may be submitted online through CPP Portal

**A-2.** The bidder should submit the bid online in two parts viz. Technical Bid and Financial/Price Bid.

**A-3. Technical Bid:** Signed and Scanned copy of the Technical bid documents as under must be submit Online on CPP Portal: <http://eprocure.gov.in/eprocure/app> .

a. **List of Documents to be scanned and uploaded (Under Cover 1) within the period of bid submission:** -

- (i) Scanned copy of GSTIN Registration Certificate, duly signed & stamped.
- (ii) Scanned copy of tender acceptance letter, duly signed & stamped
- (iii) Scanned copy of PAN Card.
- (iv) Scanned copy of IT Return for Assessment Year 2017-18 or 2018-19

#### **A-4. Financial / Price Bid**

- a. The currency of all quoted rates shall be Indian Rupees. All payment shall be made in Indian Rupees.
- b. In preparing the financial bids, bidders are expected to take into account the requirements and conditions laid down in this Tender document. The financial bids should be uploaded online as per the specified “.xls” format i.e. **Annexure-B.xls** in Excel sheet attached as ‘.xls’ with the tender and based on the scope of work, service conditions and other terms of the Tender document. It should include all costs associated with the Terms of Reference/Scope of Work of the assignment.
- c. The basic price/rate, Packing & Forwarding charges and Freight charges must be mentioned separately & Specifically. The offer quoted Inclusive of Packing & Forwarding Charges and freight charges may not be considered for further processing.
- d. The Financial bid should be according to the .xlsformat given in the Tender Document. It should be ensured that no required value against an item is missed. If the bidder does not want to charge for an item, the value must be filled as “0” (ZERO).
- e. Validity of Tenders – (a) The tenders shall remain open for acceptance for a minimum period of 90 days from the date of opening of tenders or till such period up to which the extension of validity is agreed to mutually. This may be please be stipulated clearly in the quotation. (b) If notified within this period that the tender has been accepted the tenderer shall be bound by the terms of the offer along with the terms that have been agreed to mutually. (c) All tenders without proper specification, samples, drawings and testing certificates. Where required, are liable to be rejected. It shall be in interest of tenderer that complete offer is made for our consideration.

#### **A-5. Details of offer –**

- (a) The Quoted rates shall be; FORdelivery at our Kanpur Factory, the following data shall be invariable furnished:  
- (i) Basic firm price of stores (ii) packing and forwarding charges, if any; (ii) Freight Charges.
  - (b) In the case of quotations from local parties, the following rates shall be indicated specifically: - (i) Rate for delivery at the ALIMCO Factory.
- A-6.** The GST Tax applicable shall clearly be indicated in % as well as Rupees. Our GSTIN No is 09AABCA8899F1Z6.
- A-7. Quantity Discounts** – In order to submit the most competitive offer, the tenderer may indicate the quantity discount on a “slab basis” applicable on the price. However, the buyer reserves the right to accept the quantity discounts. The quantities indicated in this enquiry are liable to revision either upwards or downwards.
- A-8. Delivery** – (a) In their own interest, tenderers are advised to quote for the earliest possible delivery. Where ex-stock delivery’s quoted stock shall be held by the tenderer during the validity period quotation.  
(b) The delivery of the stores/equipment shall be made strictly as stipulated.
- A-9. Terms & Payment** – (a) Ours is a Government of India Undertaking registered under 8 of the Indian Companies Act 2017. As such the following terms of payment are stipulated: - (i) 100% within 30 days after receipt of the stores/equipment without any damage/short supplies. **However, the GST portion will be payable only after submission of proof / self-certified copy of GST return filed online by the tenderer clearly (duly highlighted) showing invoice/ bill number and amount submitted to ALIMCO and availment of Input Credit.**
- A-10.** Important instructions – (a) Where the item offered is not as per our specified make/size, the reason for not offering the same (e.g. not in ready stock etc.) shall be clearly indicated.  
(b) Please quote for free delivery at our factory site. However, Packing and Forwarding Charges wherever applicable shall be given clearly in % and Rupees.
- A-11.** Tenderers should indicate their GST Registration No. in their quotations, failing which their offer will not be considered.
- A-12.** ALIMCO reserve the right to split up the total order quantity to more than 01 bidders to avoid stock out situation wherever necessary. In case of split up to 3 parties, 60% qty. may be placed on L-1 and 20% each on L-2 & L-3 provided they agree to match the rate with L-1 and in case of split up to 2 parties 60% qty. may be placed on L-1 and 40% on L-2 provided L-2 agree to match the rate with L-1.
- A-13. Bank Guaranty** : Successful tenderer has to deposit a bank guarantee of Rs.2.00 Lakh valid for one year as per ALIMCO terms before start of work.
- A-14.** If any dispute/question or controversy arises, the settlement of which is not herein specifically provided in this Tender/Order/Contract, the matter in dispute shall be referred to the arbitration of Chairman and Managing Director of ALIMCO Or his nominee and decision of Chairman and Managing Director or his nominee shall be final and binding on both the parties. The provision of INDIAN ARBITRATION & CONCILLATION ACT 1956 as amended from time to time shall apply to such arbitration proceedings. Arbitration proceeding shall be held at Kanpur only and Kanpur Nagar Court will have jurisdiction in the matter.

**Encl.:** Annexure – ‘A’, ‘B’, ‘C’ & ‘D-1’ to ‘D-4’

Authorized Signatory  
For Artificial Limbs Manufacturing Corporation of India  
G T Road, Kanpur



**TENDER ACCEPTANCE LETTER**  
(To be given on Company Letter Head)

Date:

To,

\_\_\_\_\_

\_\_\_\_\_

Sub: Acceptance of Terms & Conditions of Tender.

Tender Reference No: \_\_\_\_\_

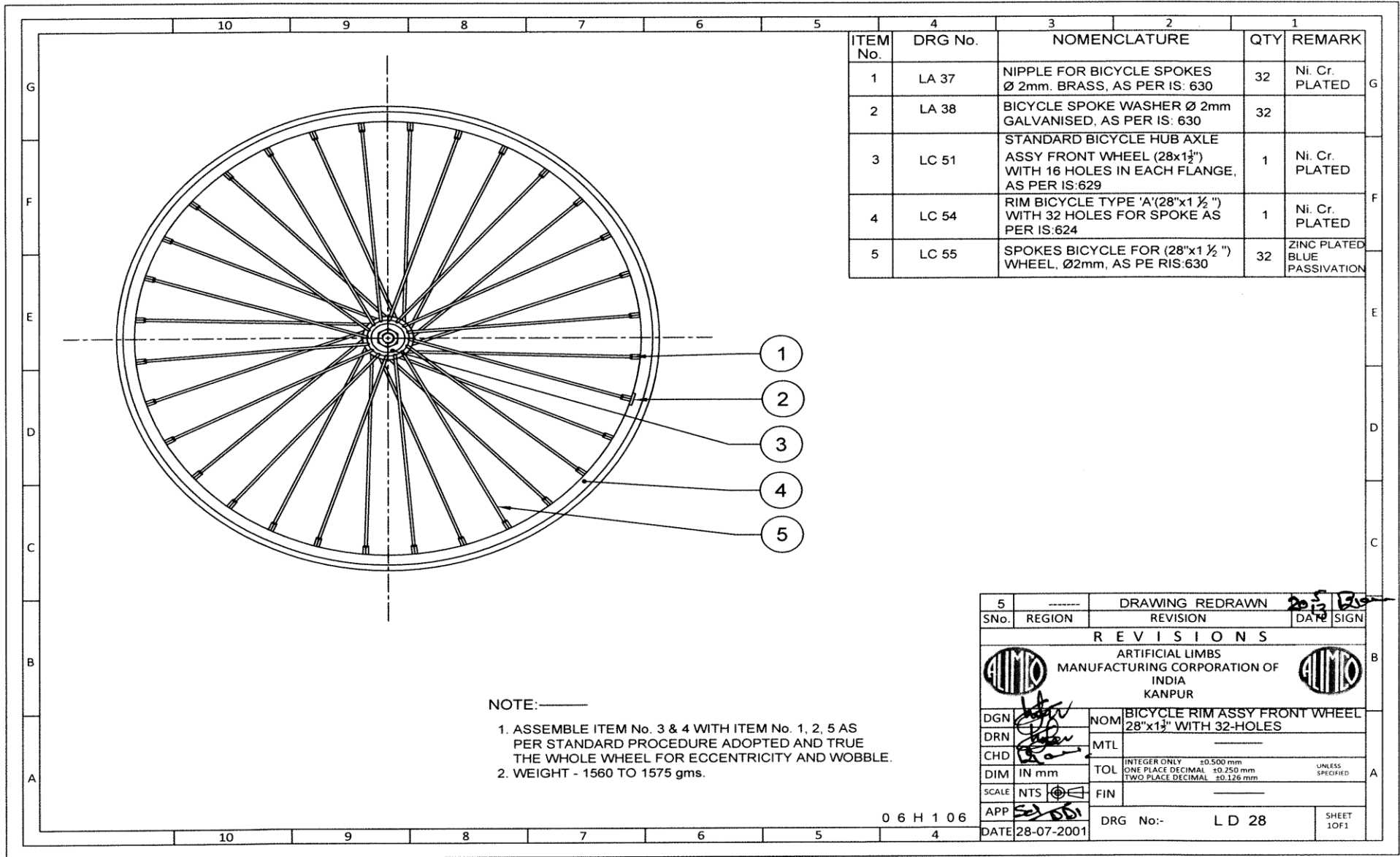
Name of Tender / Work: - \_\_\_\_\_

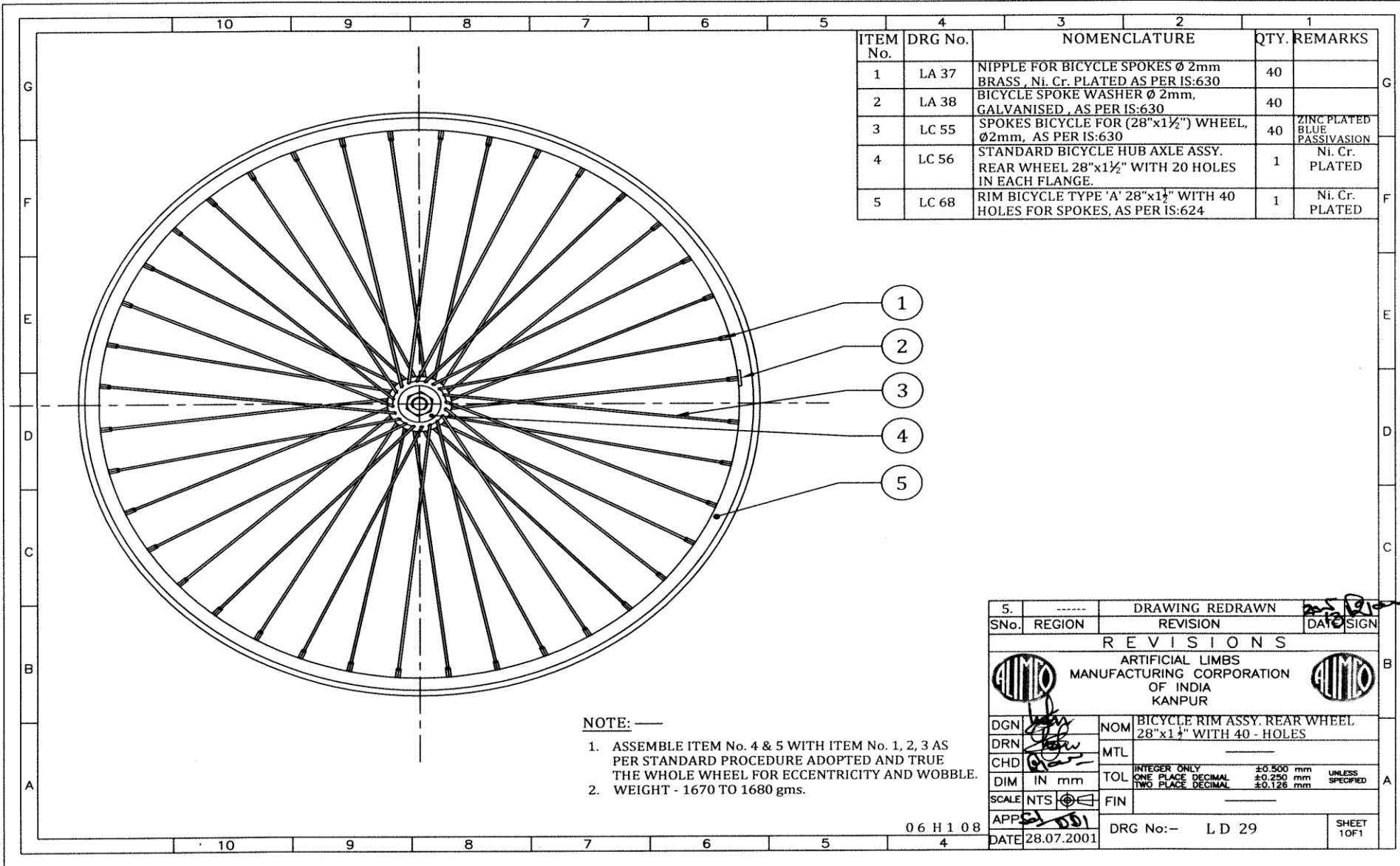
Dear Sir,

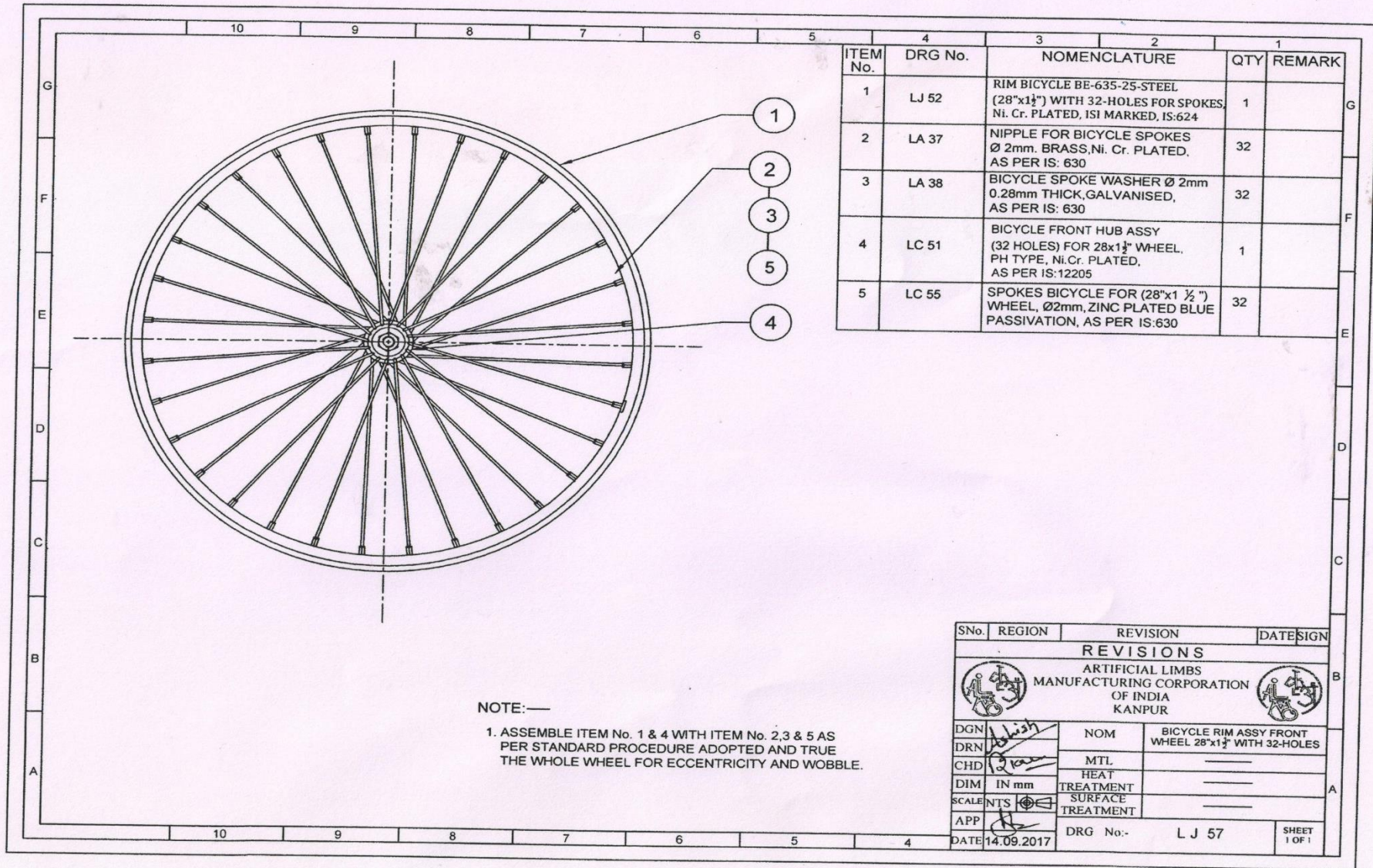
1. I / We have downloaded / obtained the tender document(s) for the above mentioned 'Tender/Work' from the web site(s) namely: As per your advertisement, given in the above mentioned website(s).
2. I / We hereby certify that I / we have read the entire terms and conditions of the tender documents from Page No. \_\_\_\_\_ To \_\_\_\_\_ (Including all documents like annexure(s), schedule(s), etc...), which form part of the contract agreement and I / we shall abide hereby by the terms / conditions / clauses contained therein.
3. The corrigendum(s) issued from time to time by your department/ organization too have also been taken into consideration, while Submitting this acceptance letter.
4. I / We hereby unconditionally accept the tender conditions of above mentioned tender document(s) / corrigendum(s) in its totality / Entirety.
5. I / We do hereby declare that our Firm has not been blacklisted/ debarred/ terminated/ banned by any Govt. Department/Public sector undertaking.
6. I / We certify that all information furnished by our Firm is true & correct and in the event that the information is found to be incorrect/untrue or found violated, then your department/ organization shall without giving any notice or reason therefore or summarily reject the bid or terminate the contract, without prejudice to any other rights or remedy including the forfeiture of the full said earnest money deposit absolutely.

Yours Faithfully,

(Signature of the Bidder, with Official Seal)



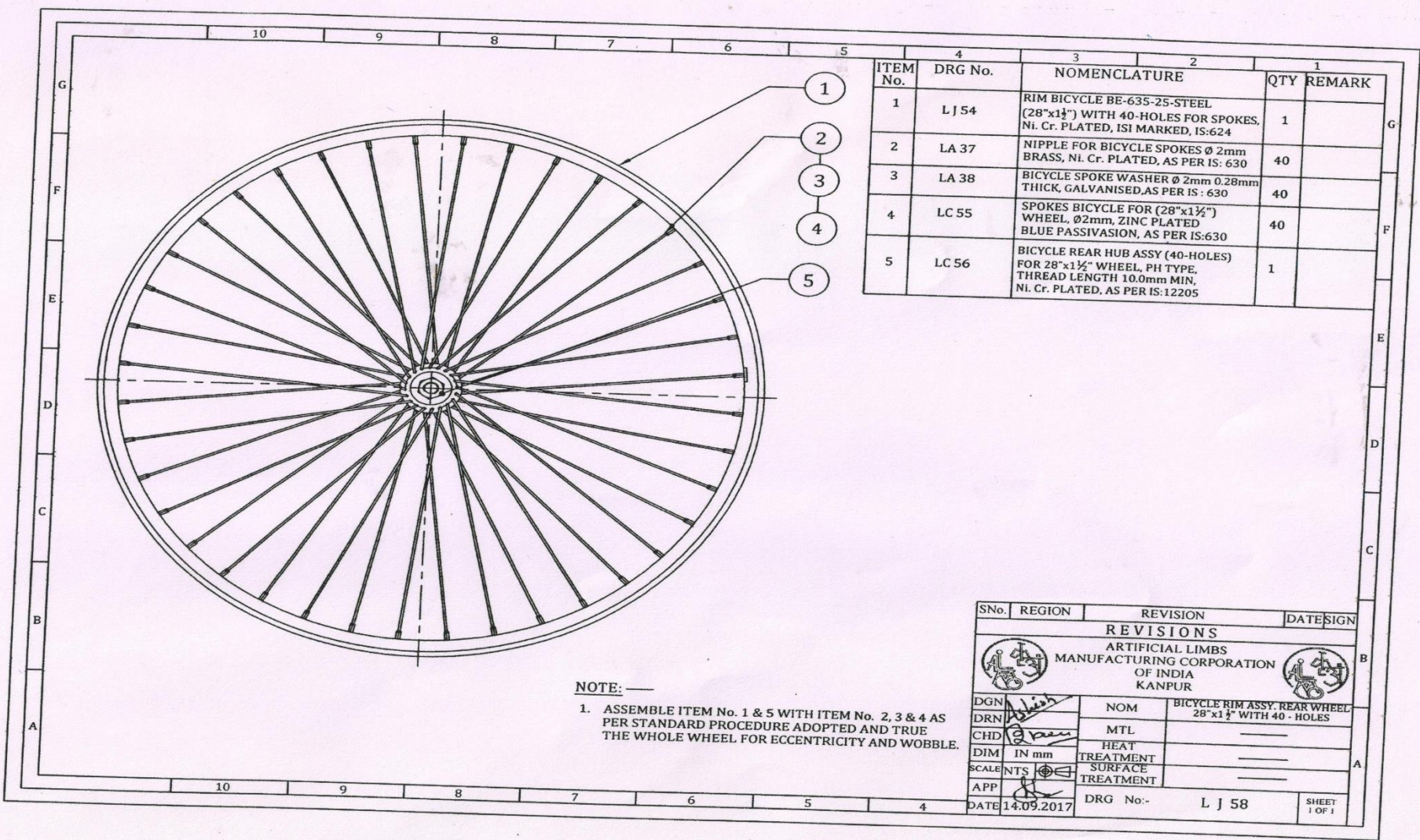




ITEM No.	DRG No.	NOMENCLATURE	QTY	REMARK
1	LJ 52	RIM BICYCLE BE-635-25-STEEL (28"x1 1/2") WITH 32-HOLES FOR SPOKES, Ni. Cr. PLATED, ISI MARKED, IS:624	1	
2	LA 37	NIPPLE FOR BICYCLE SPOKES Ø 2mm, BRASS, Ni. Cr. PLATED, AS PER IS: 630	32	
3	LA 38	BICYCLE SPOKE WASHER Ø 2mm 0.28mm THICK, GALVANISED, AS PER IS: 630	32	
4	LC 51	BICYCLE FRONT HUB ASSY (32 HOLES) FOR 28x1 1/2" WHEEL, PH TYPE, Ni.Cr. PLATED, AS PER IS:12205	1	
5	LC 55	SPOKES BICYCLE FOR (28"x1 1/2") WHEEL, Ø2mm, ZINC PLATED BLUE PASSIVATION, AS PER IS:630	32	

NOTE:—  
1. ASSEMBLE ITEM No. 1 & 4 WITH ITEM No. 2,3 & 5 AS PER STANDARD PROCEDURE ADOPTED AND TRUE THE WHOLE WHEEL FOR ECCENTRICITY AND WOBBLE.

SNo.	REGION	REVISION	DATE	SIGN
<b>REVISIONS</b>				
ARTIFICIAL LIMBS MANUFACTURING CORPORATION OF INDIA KANPUR				
DGN	<i>[Signature]</i>	NOM	BICYCLE RIM ASSY FRONT WHEEL 28"x1 1/2" WITH 32-HOLES	
DRN	<i>[Signature]</i>	MTL	_____	
CHD	<i>[Signature]</i>	HEAT TREATMENT	_____	
DIM	IN mm	SURFACE TREATMENT	_____	
SCALE	NTS		_____	
APP	<i>[Signature]</i>		_____	
DATE	14.09.2017	DRG No.:	L J 57	SHEET 1 OF 1



ITEM No.	DRG No.	NOMENCLATURE	QTY	REMARK
1	L J 54	RIM BICYCLE BE-635-25-STEEL (28"x1 1/2") WITH 40-HOLES FOR SPOKES, Ni. Cr. PLATED, ISI MARKED, IS:624	1	
2	LA 37	NIPPLE FOR BICYCLE SPOKES Ø 2mm BRASS, Ni. Cr. PLATED, AS PER IS: 630	40	
3	LA 38	BICYCLE SPOKE WASHER Ø 2mm 0.28mm THICK, GALVANISED, AS PER IS: 630	40	
4	LC 55	SPOKES BICYCLE FOR (28"x1 1/2") WHEEL, Ø2mm, ZINC PLATED BLUE PASSIVATION, AS PER IS:630	40	
5	LC 56	BICYCLE REAR HUB ASSY (40-HOLES) FOR 28"x1 1/2" WHEEL, PH TYPE, THREAD LENGTH 10.0mm MIN, Ni. Cr. PLATED, AS PER IS:12205	1	

**NOTE: —**  
 1. ASSEMBLE ITEM No. 1 & 5 WITH ITEM No. 2, 3 & 4 AS PER STANDARD PROCEDURE ADOPTED AND TRUE THE WHOLE WHEEL FOR ECCENTRICITY AND WOBBLE.

SN.No.	REGION	REVISION	DATE	SIGN
<b>REVISIONS</b>				
ARTIFICIAL LIMBS MANUFACTURING CORPORATION OF INDIA KANPUR				
DGN	NOM		BICYCLE RIM ASSY, REAR WHEEL	
DRN	MTL		28"x1 1/2" WITH 40-HOLES	
CHD	HEAT		—	
DIM	TREATMENT		—	
SCALE	SURFACE		—	
APP	TREATMENT		—	
DATE	DRG No:-		SHEET	
14.09.2017	L J 58		1 OF 1	